



HP Beats Special Edition 15-p390nr Keyboard Replacement

This guide will help disassemble the keyboard panel.

Written By: Deziree Mascarenas



INTRODUCTION


Use this guide to help disassemble the keyboard panel for any parts needing to be replaced located under the keyboard panel.

TOOLS:

- [Phillips #0 Screwdriver](#) (1)
 - [Phillips #00 Screwdriver](#) (1)
 - [Metal Spudger](#) (1)
-

Step 1 — Keyboard



 Turn computer off before starting.

- Turn computer over and begin removing noticeable 8mm screws with a Phillips #0 screwdriver.

Step 2



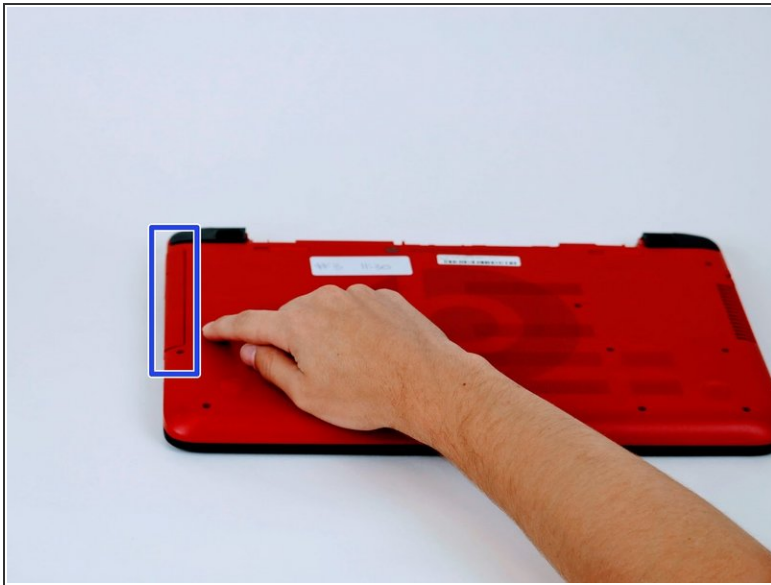
 Some screws may be hidden under a screw cover.

- Simply use a metal spudger to pop off the screw cover to unveil the hidden 8mm screw.

Screw cover may fly when removing.

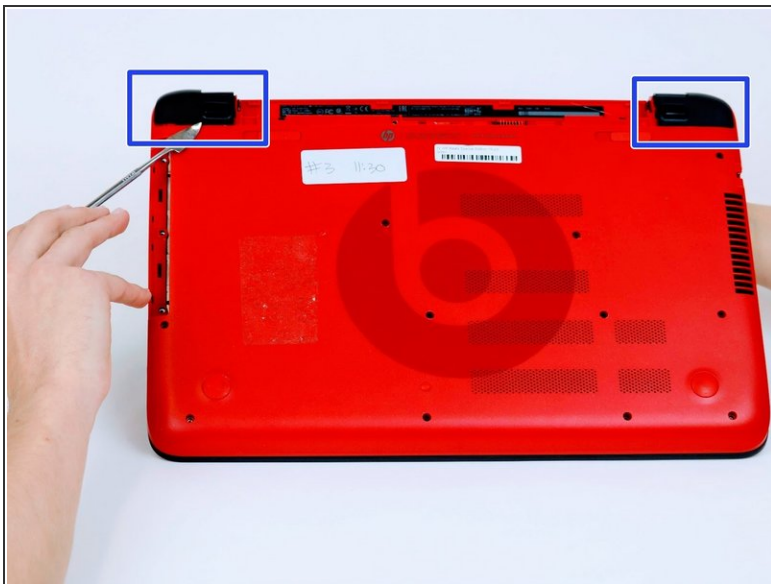


Step 3



- Once screws are removed you may now remove the optical drive.
- Remove the hidden 3mm screw in the optical drive port.

Step 4

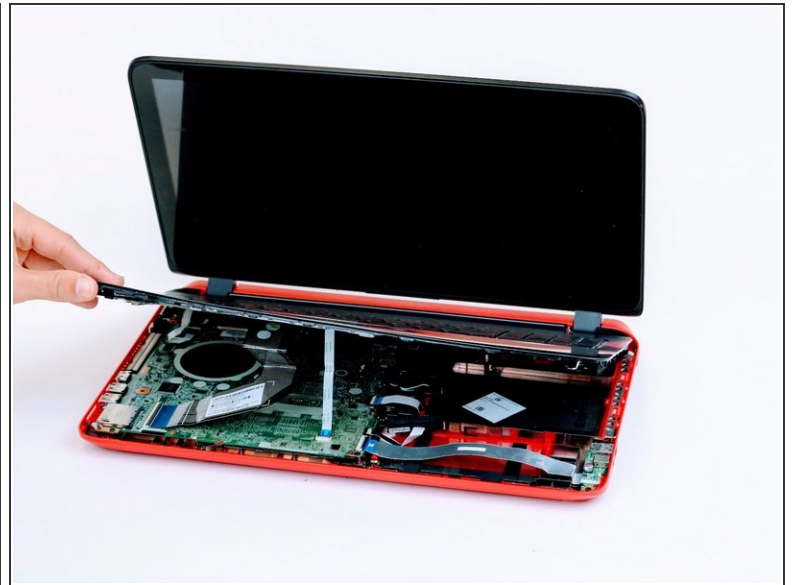


- Remove the rubberized feet located on the left and right shoulder of the computer to uncover hidden 8mm screws.



Popping noises are normal

Step 5



- Flip computer over and wedge metal spudger along the computer to pop off keyboard panel

Step 6



- Unclip wires connected to the motherboard and remove keyboard from the device.

i 17 screws should be removed up to this point.

To reassemble your device, follow these instructions in reverse order.

This document was last generated on 2019-07-20 09:08:32 AM.