



Polaroid Z2300 Control Panel Replacement

Step-by-step guide for replacing a malfunctioned control panel.

Written By: Bradley Marcum



INTRODUCTION

This guide is intended for users who have Polaroid Z2300 with a malfunctioning control panel.

TOOLS:

- [iFixit Opening Tools](#) (1)
 - [JIS #00 Screwdriver](#) (1)
-

Step 1 — Control Panel Replacement

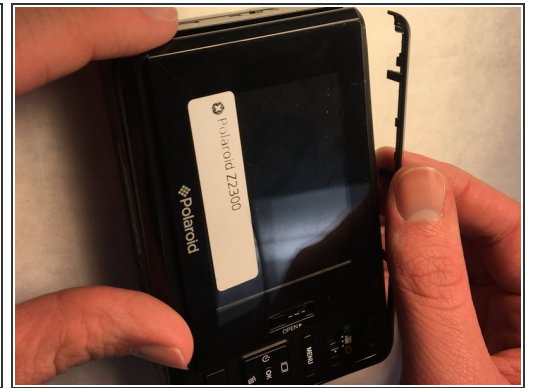
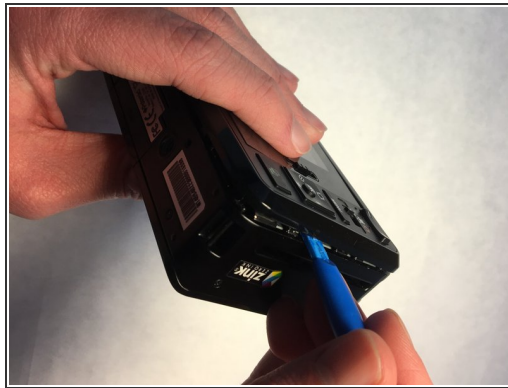
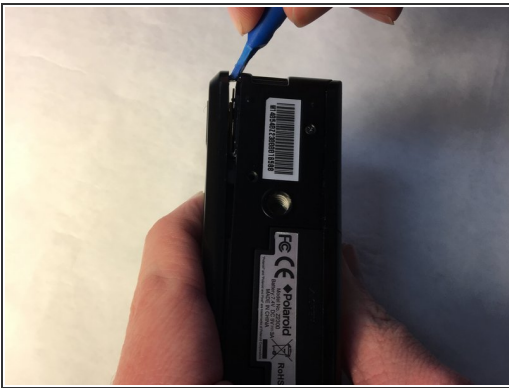


- Locate and remove the two 2.5 mm long screws on the bottom of the camera.

- Screw head: JIS J00

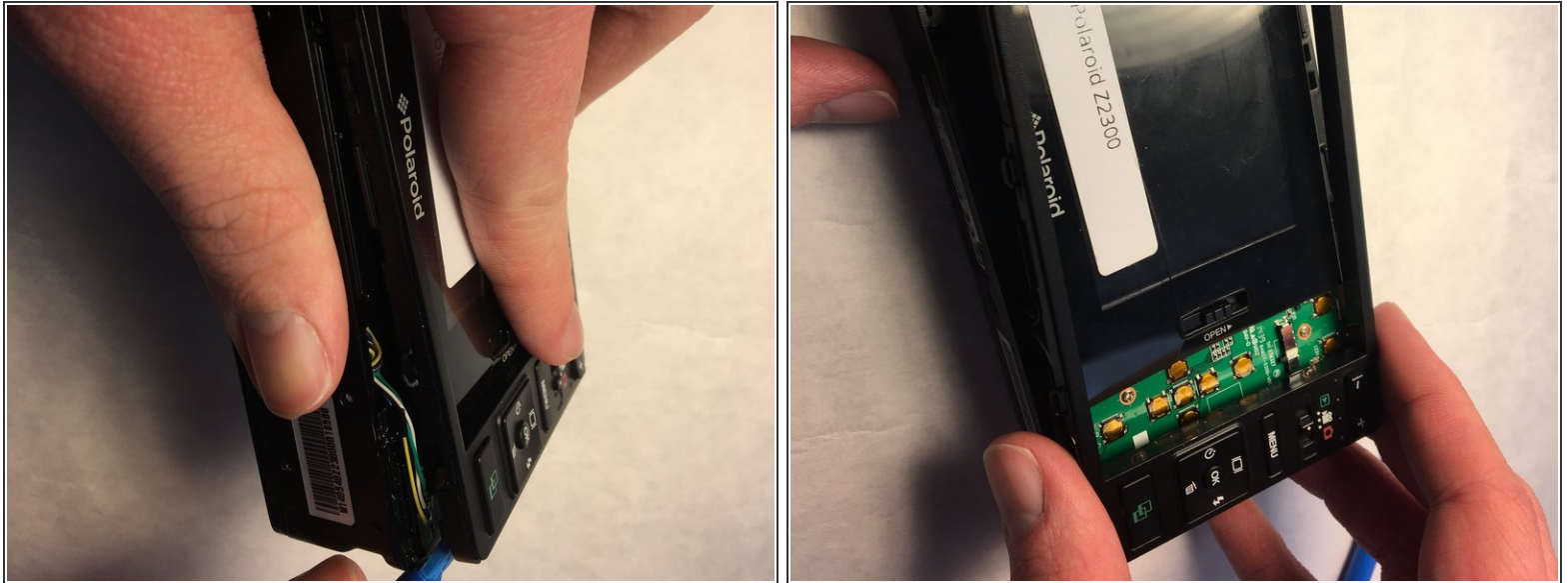
⚠ The screws are very small, be careful not to strip or lose them!

Step 2



- Once the two screws are removed, flip the camera to back side up.
- Use a plastic opening tool to disengage the outer plastic trim until it can be safely removed.

Step 3



- Use a plastic opening tool to pop the control panel off, it should be easy to lift up and remove.

To reassemble your device, follow these instructions in reverse order.

This document was last generated on 2019-01-14 10:53:46 PM.