



Gateway NV55C49u Hard Drive Replacement

If your laptop is constantly bombarded with error messages. This could mean your hard drive is faulty, use this guide to replace your hard drive.

Written By: dylan



INTRODUCTION

If your laptop is constantly bombarded with error messages, disk failures, or blue screen, this could mean your hard drive is faulty. Use this guide to replace your hard drive.

TOOLS:

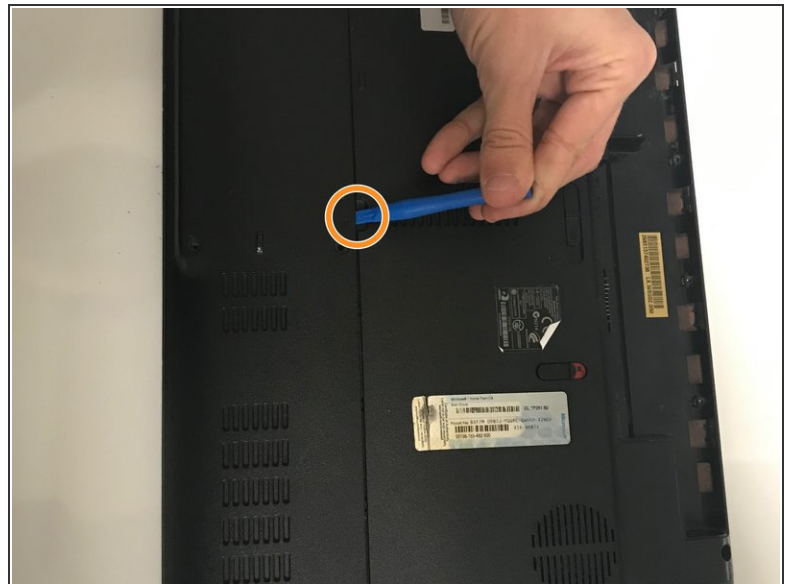
- [iFixit Opening Tools](#) (1)
 - [Phillips #00 Screwdriver](#) (1)
-

Step 1 — Hard Drive



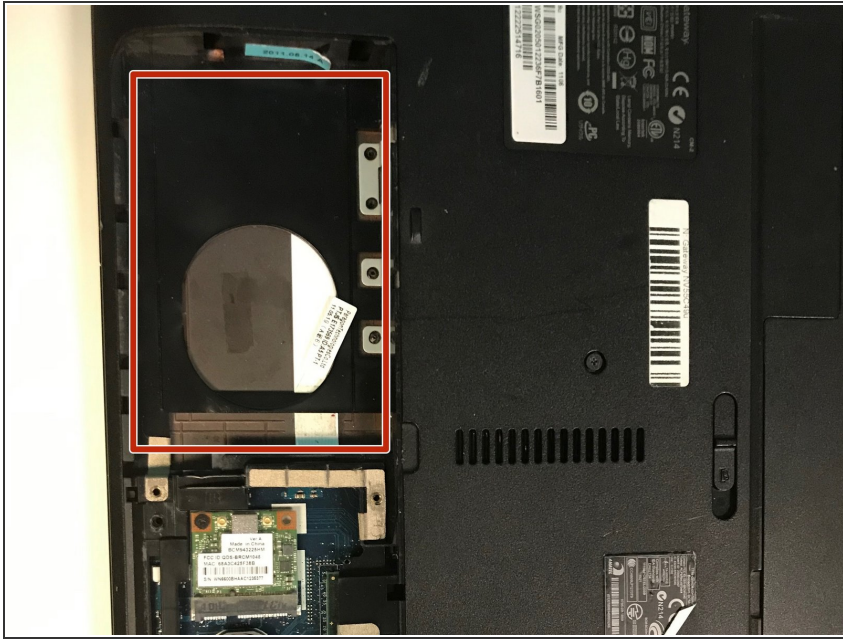
- Flip the laptop with the bottom side up.

Step 2



- Remove the two 6.0mm Philips #00 screws from the back cover.
- Using the plastic opening tool to pry open the back cover

Step 3



- Remove the hard drive by lifting it out, and removing any necessary screws.

To reassemble your device, follow these instructions in reverse order.

This document was last generated on 2019-09-16 09:12:25 AM.