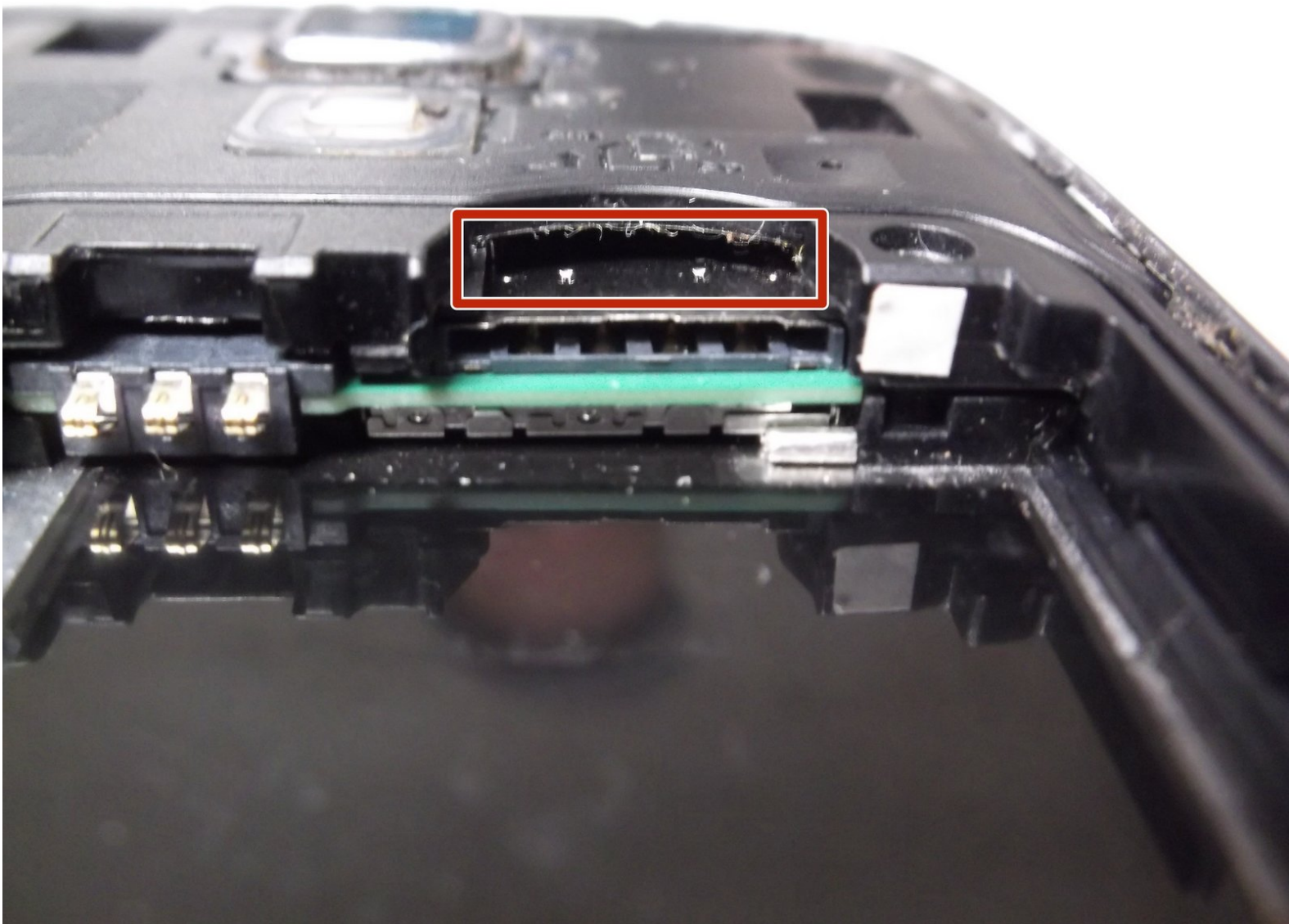




Kyocera Hydro Life SD Card Replacement

This guide will detail the process to replace the SD Card.

Written By: Rebecca Lamb



INTRODUCTION

This guide will detail the process to replace the SD Card.



TOOLS:

- [Fingers](#) (1)



PARTS:

- [16 GB SD Card](#) (1)

Step 1 — SD Card



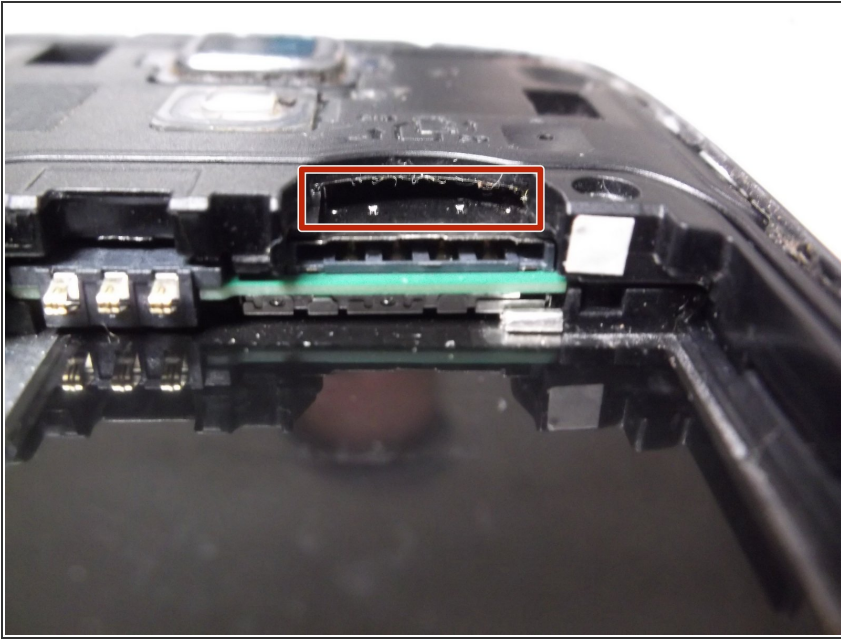
- Open the back of the phone by prying the back cover off.

Step 2



- Remove the battery by pulling up on the end.

Step 3



- Remove the SD Card by pushing in slightly and then releasing, allowing the card to slide out slightly and then removing it.
- ☑ Place a new SD Card into this slot, making sure to line up the metal prongs.

To reassemble your device, follow these instructions in reverse order.

This document was last generated on 2019-07-21 02:58:05 PM.