



# MacBook Pro Retina 2012–2015 Feet Replacement

Prerequisite-only guide describing how to replace the feet of a 2012-2015 MacBook Pro Retina.

Written By: Taylor Dixon



## INTRODUCTION

This is a prerequisite guide describing how to replace MacBook Pro Retina feet, applicable to models A1425, A1502, and A1398. For a full guide including lower case removal, refer to the specific MacBook Pro device pages.

---

### TOOLS:

- [Tweezers](#) (1)
- [Adhesive Cleanup Kit](#) (1)

### PARTS:

- [MacBook Pro Retina Plastic Feet](#) (1)

## Step 1 — Feet



- Peel away any stickers from the backside of the rear case covering the feet you have chosen to replace.
  - ☑ Any stickers you remove will most likely be unsalvageable for re-use. That's okay! Your MacBook does not need them to function.

## Step 2



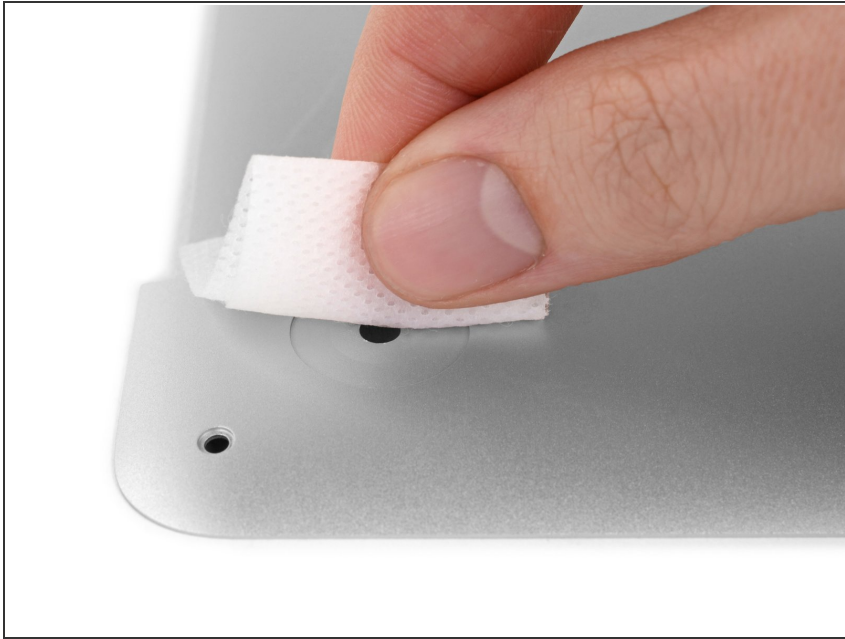
- Remove any broken or damaged feet.
  - ⓘ If the foot you are replacing is still intact, you can use your tweezers push it out from the inside.
- If the old foot is difficult to remove, use a hair dryer or a heat gun to apply some heat to the area and loosen the adhesive.

## Step 3



- Scrub the foot cavity with adhesive remover to remove any remaining adhesive.

## Step 4



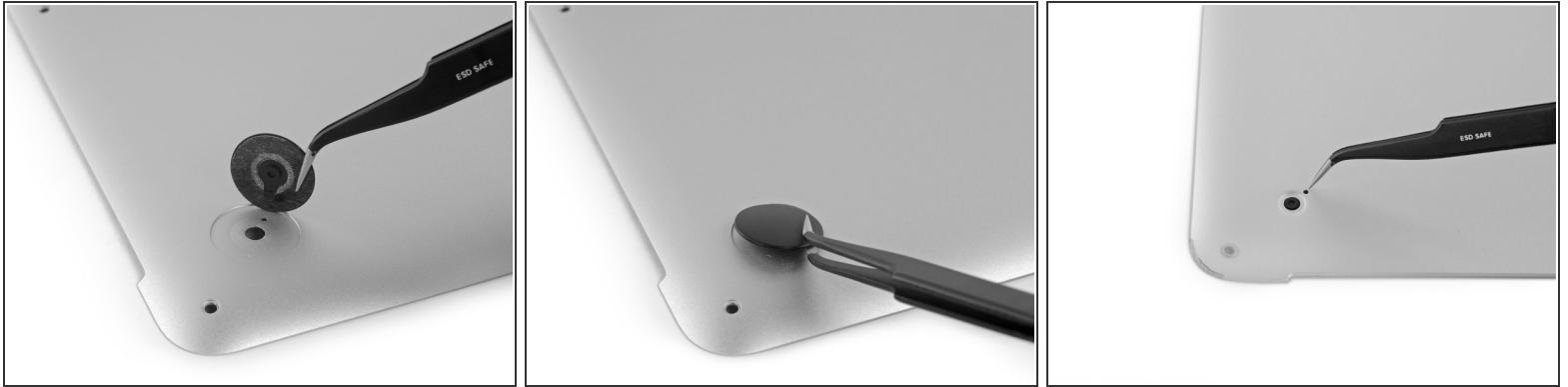
- Wipe the foot cavity with an isopropyl alcohol prep pad to remove any cleaner residue and prep the area for the adhesive on the new foot.

## Step 5



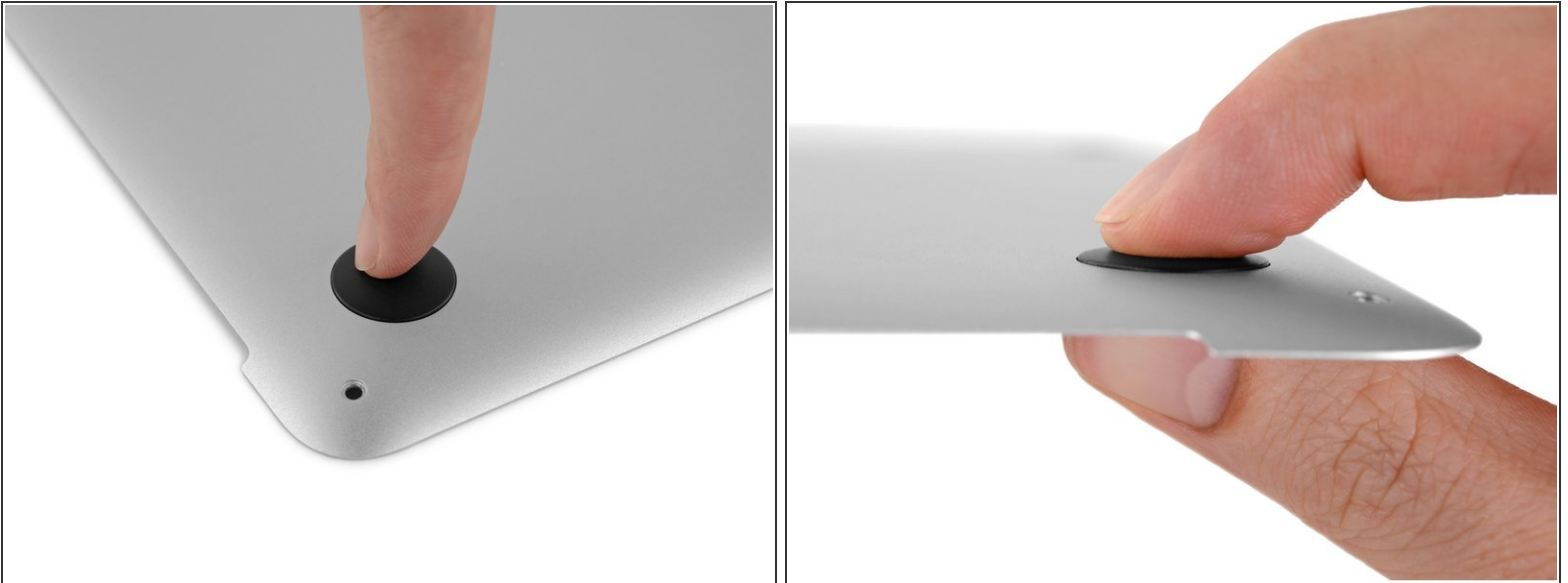
- Peel a replacement foot from the plastic backing.
- ⓘ The adhesive is fairly strong—make sure that you are peeling the foot up, not tearing the plastic backing.

## Step 6



- Align the new foot inside the cavity.
  - ⓘ Make sure the alignment nub on the foot is lined up with the small hole near the perimeter of the pad.
- Lay the foot down while keeping it properly aligned.
- Check for proper alignment from the inside of the case. The alignment nub should be slightly visible through the alignment hole.

## Step 7



- Press the new foot into place firmly with your finger, then apply pressure by pinching the foot from either side of the case with your finger and your thumb.
- Maintain pressure for 30 seconds to set the pressure-sensitive adhesive.
- Repeat the last seven steps for any remaining broken or worn feet.

To reassemble your device, follow these instructions in reverse order.

This document was last generated on 2019-08-25 03:12:31 PM.