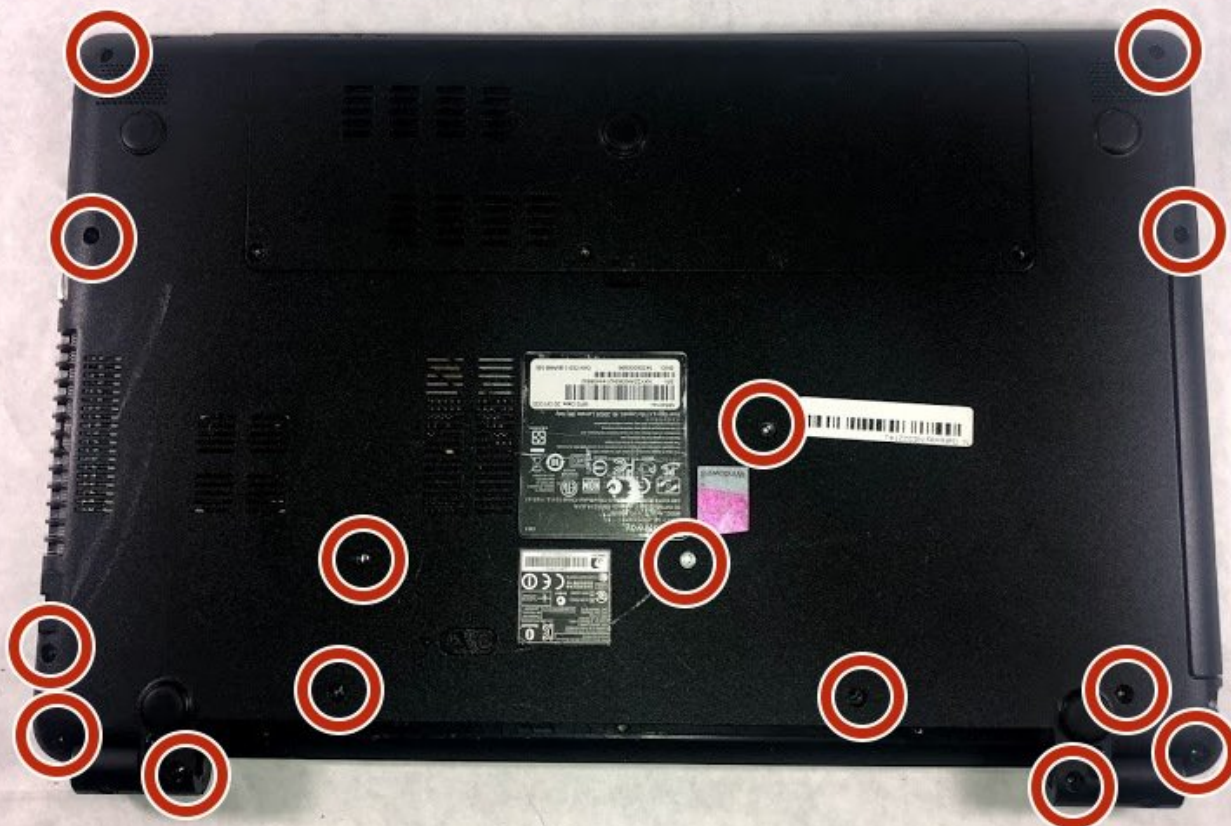




Gateway NE52214U Upper Case Replacement

How to remove and replace the upper case of the your Gateway NE52214U.

Written By: Kelsey Rodrigues



INTRODUCTION

Removing the upper case of the laptop is necessary if the case is significantly damaged since it is essentially to protecting the laptop's internal components. Upper case removal is also a necessary preliminary step for replacing many of these internal components. Remove battery before upper cover case.

TOOLS:

- [Phillips #1 Screwdriver](#) (1)

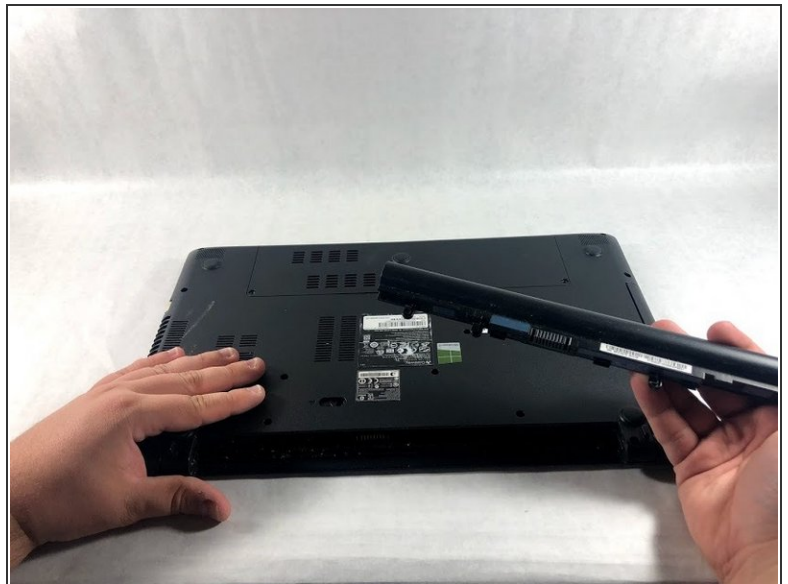
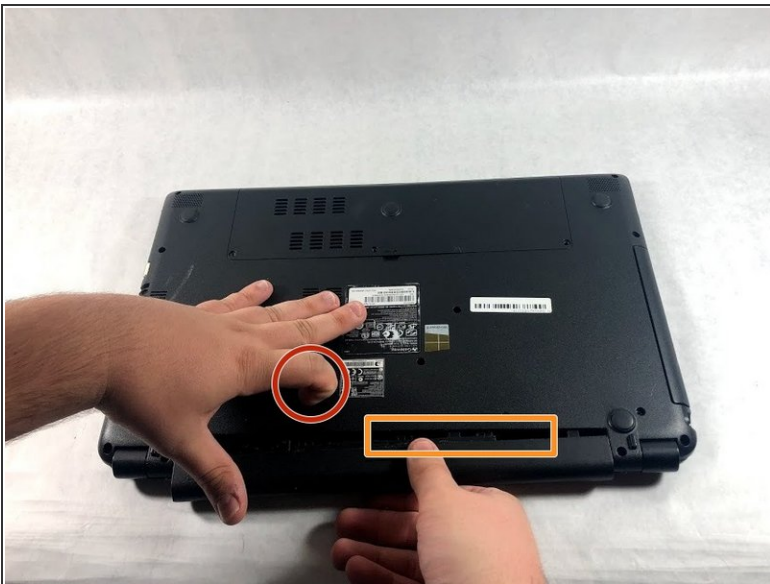
Step 1 — Battery



! Make sure to power down and turn off the laptop before proceeding with this guide.

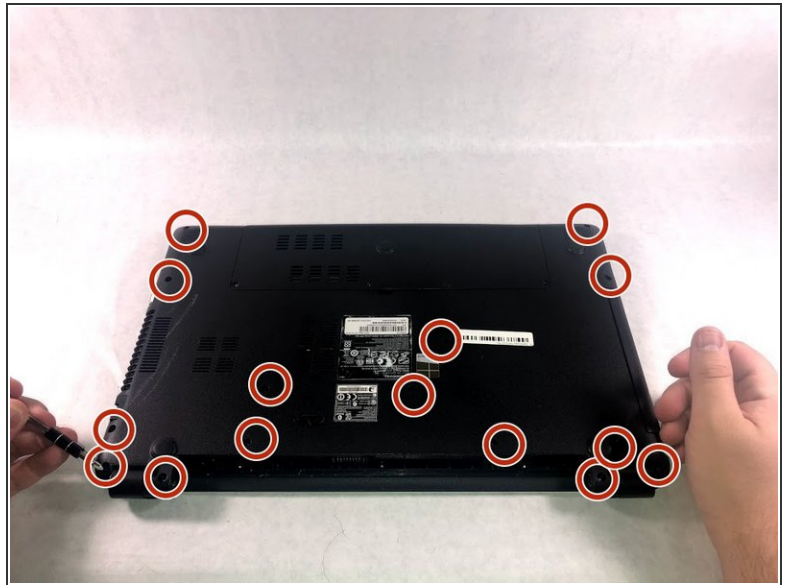
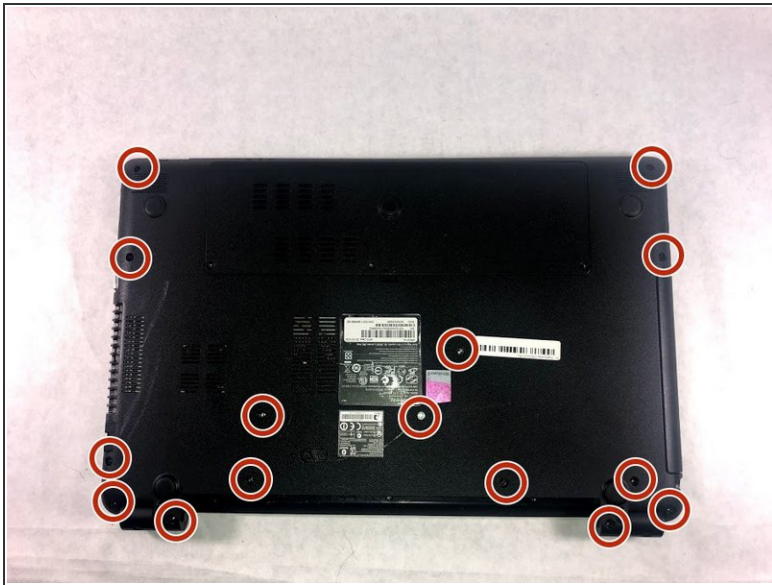
- Flip over the laptop.

Step 2



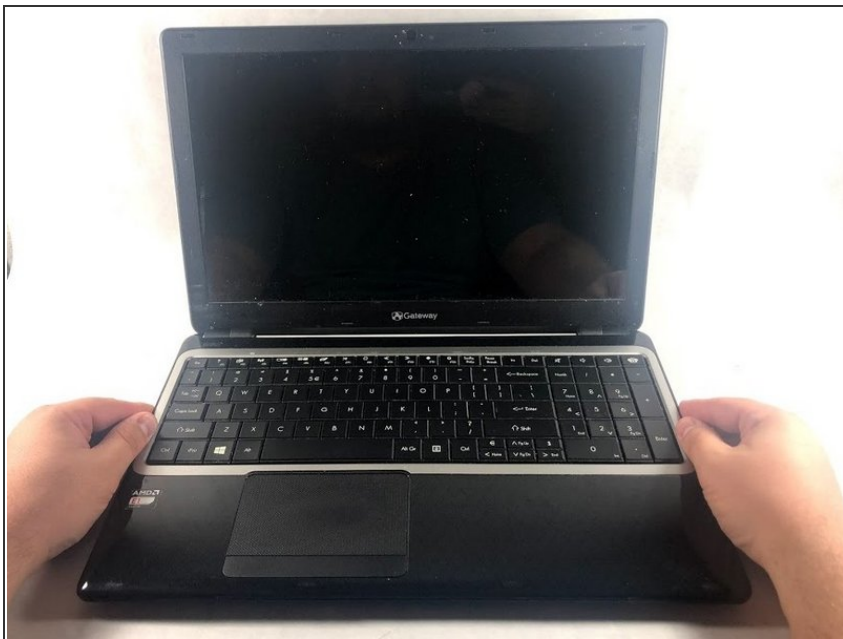
- Slide the tab to the left and hold the tab there.
- While holding down the sliding tab, remove the battery from the device.

Step 3 — Upper Case



- After removing the battery, remove 15 7mm screws using the Phillip #1 Screwdriver.

Step 4



- Flip over the laptop and open it so the screen is facing you.

Step 5



- Lift the upper case cover off of the device. Use a prying tool along the edges if necessary.

To reassemble your device, follow these instructions in reverse order.