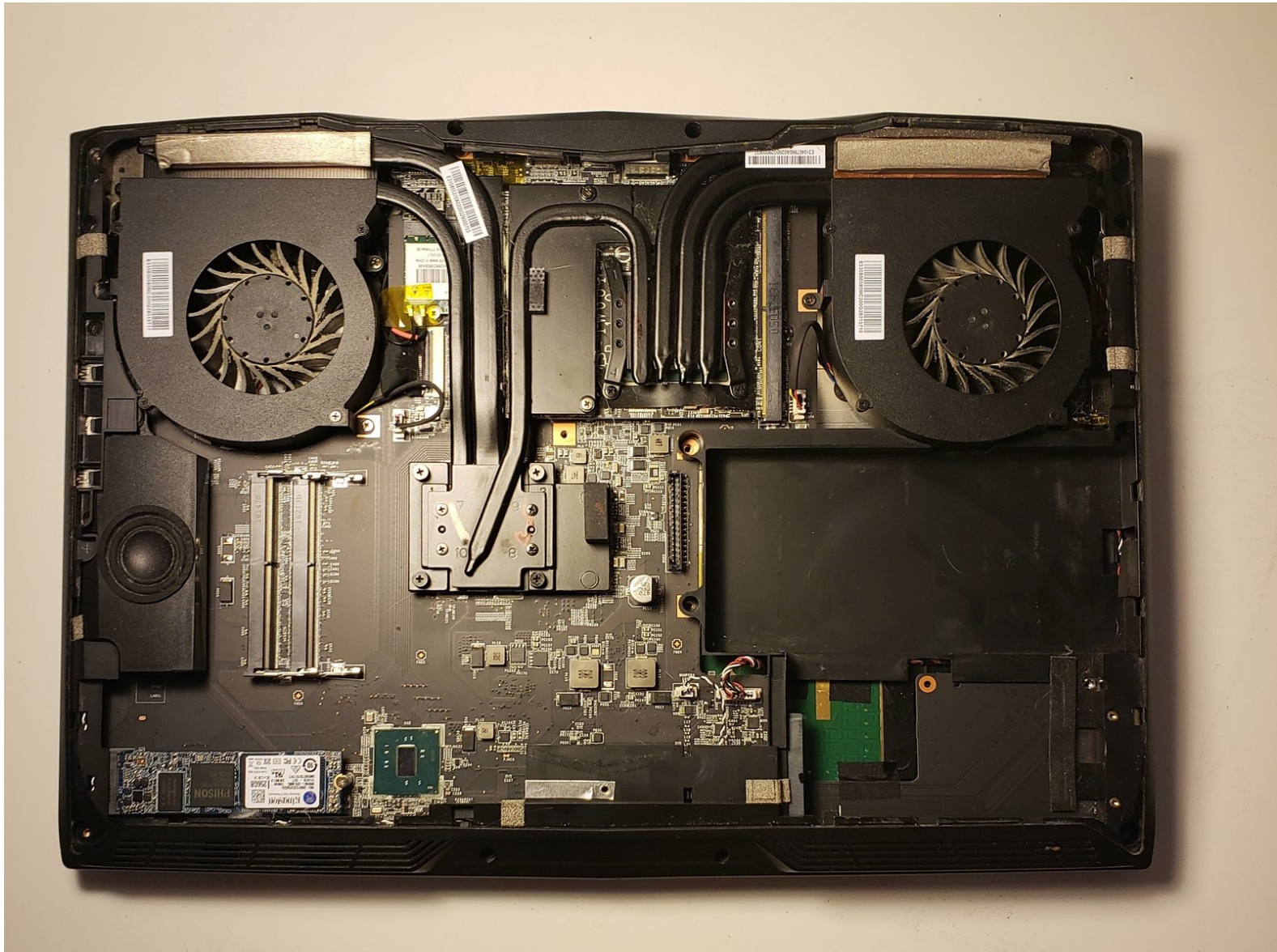




MSI GT62VR 6RD Dominator Video Card Replacement

This guide will show how to remove the video card on the MSI GT62VR 6RD Dominator.

Written By: Matthew Berberich



INTRODUCTION

This troubleshooting guide will give step-by-step instructions on how to replace the video card on your MSI GT62VR 6RD Dominator laptop. This troubleshooting guide has no special requirements or potential hazards. It is recommended to replace your video card if you experience a few of the following: screen flashing, distorted video, and lethargic mouse cursor movements. Little to no risk of injury is involved to complete these guide steps and is not time consuming to complete.

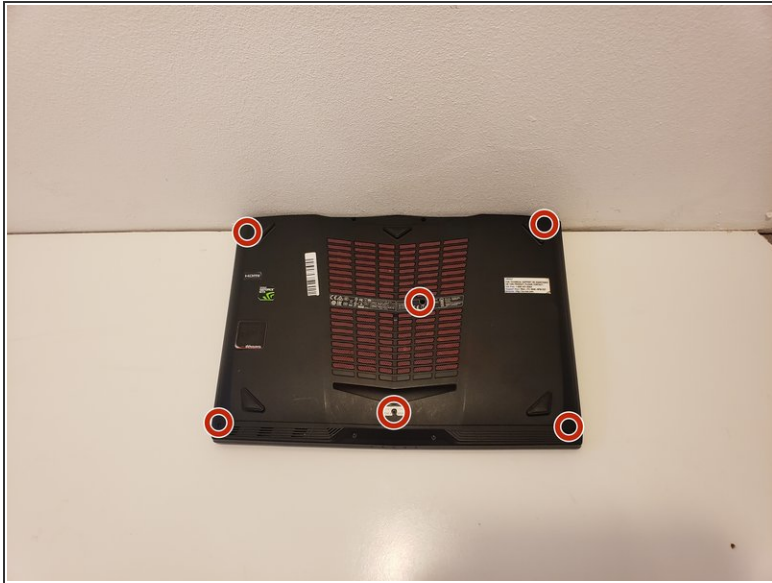
TOOLS:

- [iFixit Opening Tools](#) (1)
- [JIS #0 Screwdriver](#) (1)

PARTS:

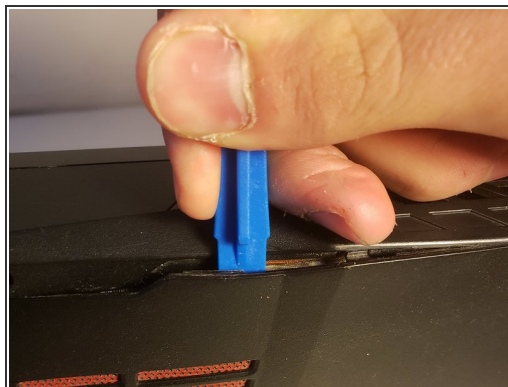
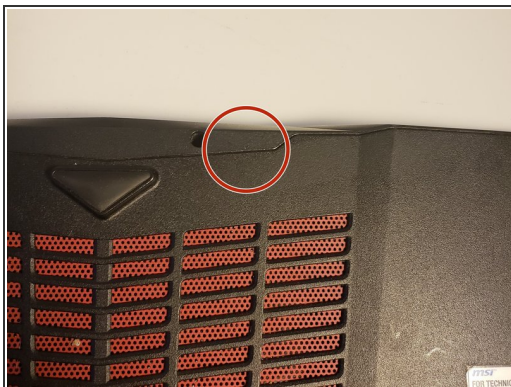
- [Video Card](#) (1)

Step 1 — Video Card



- Remove the six 1.2mm screws on the bottom plate of the laptop using a JIS #0 screwdriver.

Step 2

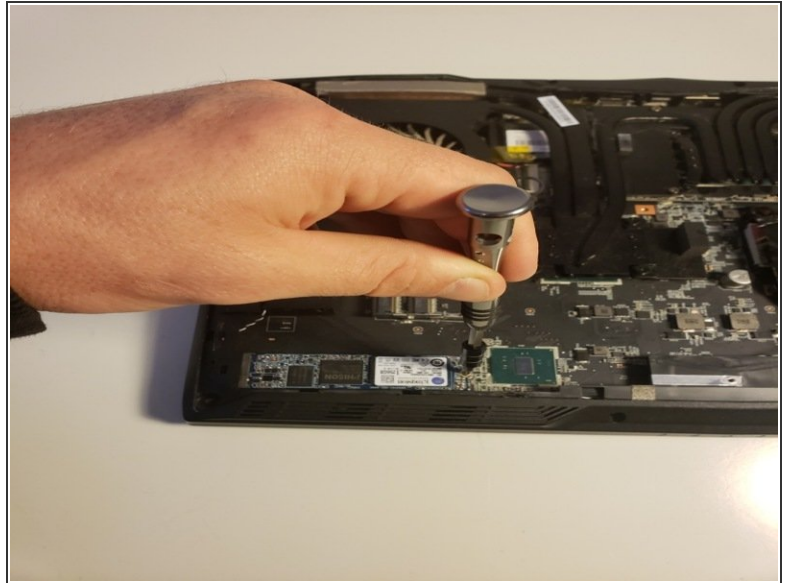
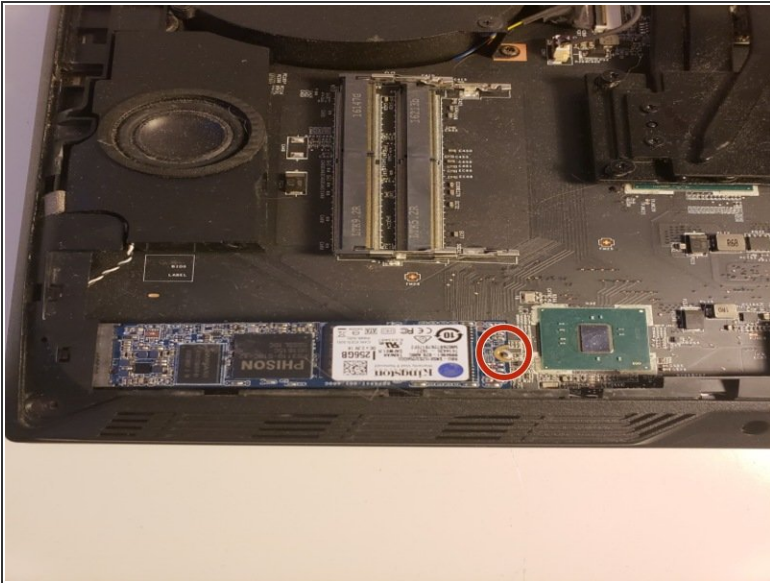


- Insert the plastic opening tool into the seam on the backplate of the laptop.

⚠ A popping sound will be produced from your device while you remove the backplate.

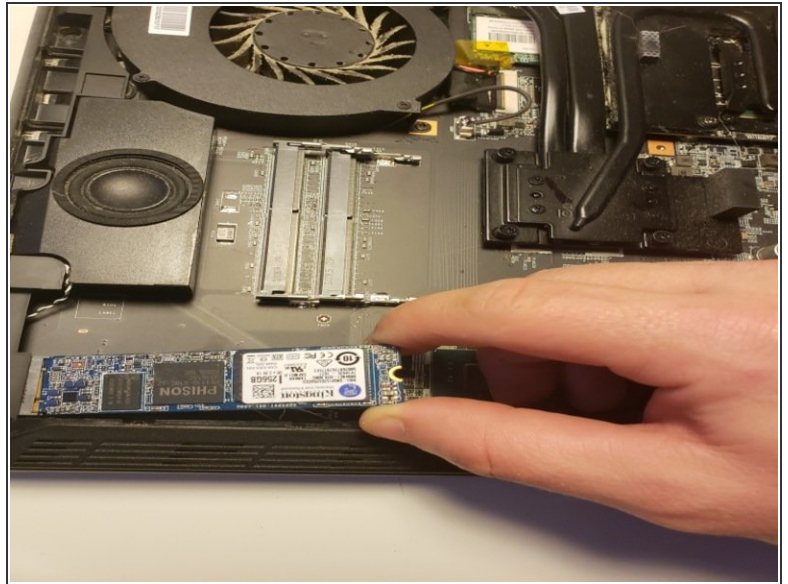
- Pry the back plate up.
- Slide the plastic opening tool around the laptop's edge slowly until the backplate is completely removed.

Step 3



- Remove the single 1.2mm screw securing the video card to the laptop using the JIS #0 screwdriver.

Step 4



- Remove the old video card.

To reassemble your device, follow these instructions in reverse order.

