



iRobot Roomba 860 Main Brush Replacement

This guide will show you how to remove the two center main brushes on the iRobot Roomba 860.

Written By: Stephen Yezukevicz



INTRODUCTION

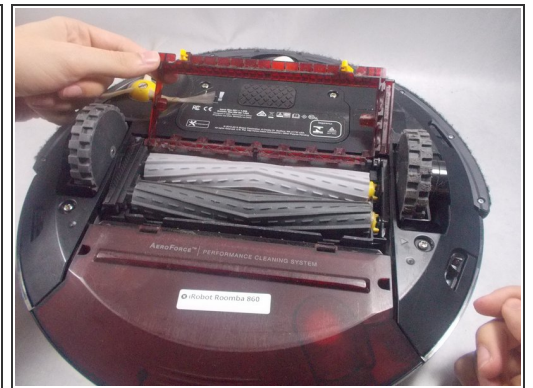
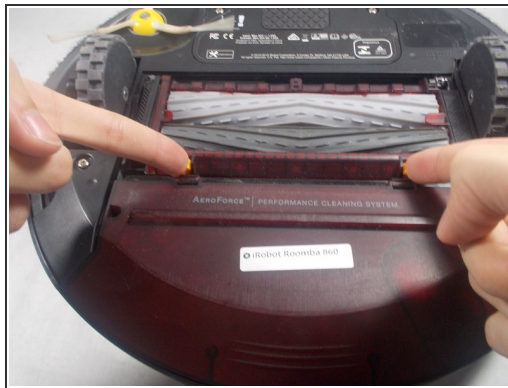
This guide will show you how to remove the two center main brushes on the iRobot Roomba 860. No tools or prior knowledge is required for this fix. Please note that a clean surface is best for this repair. Also, be aware that you may get dirty when removing the old main brushes from the iRobot.

Step 1 — Main Brush



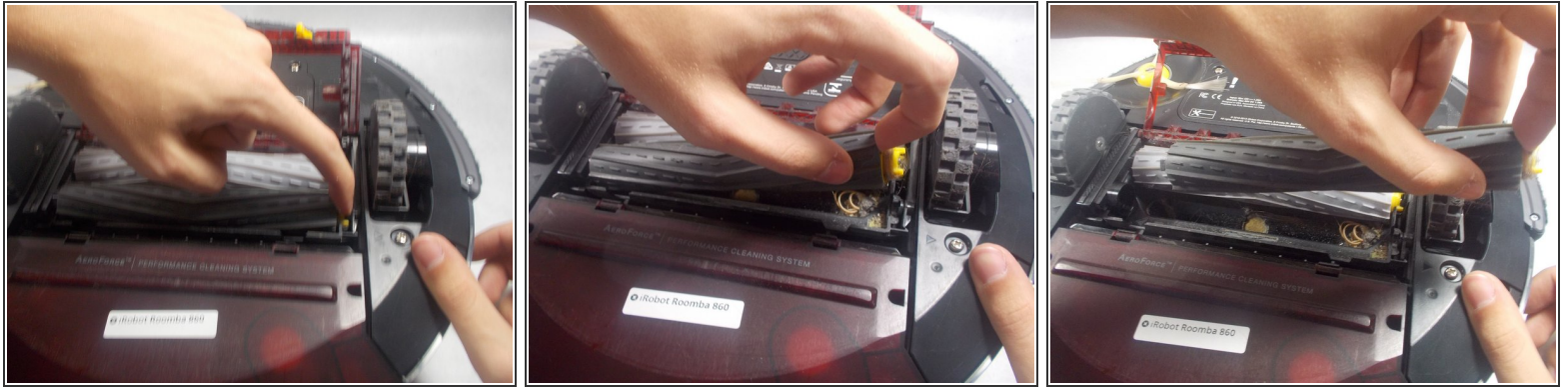
- Flip the Roomba upside down and so that the side brush is closest to you and on the right side.

Step 2



- Using the two yellow tabs, pinch them towards one another.
- Carefully lift the door up with the hinge away from you.

Step 3



- Pull out the main brush, similar to removing a set of batteries from a remote.
- Repeat to remove both of the main brushes.

To reassemble your device, follow these instructions in reverse order.

This document was last generated on 2019-01-05 10:09:11 AM.