



Lenovo ThinkPad E485 Unboxing Teardown

CPU: Ryzen 5 2500U 2.0 GHz Chipset : AMD SoC RAM: Samsung DDR4-8GB-2400MHz HDD:
Samsung PCIe NVMe 256GB Graphics: Radeon Vega 8 Graphics OS: Windows 10 Pro

Written By: IT FIX

TOOLS:

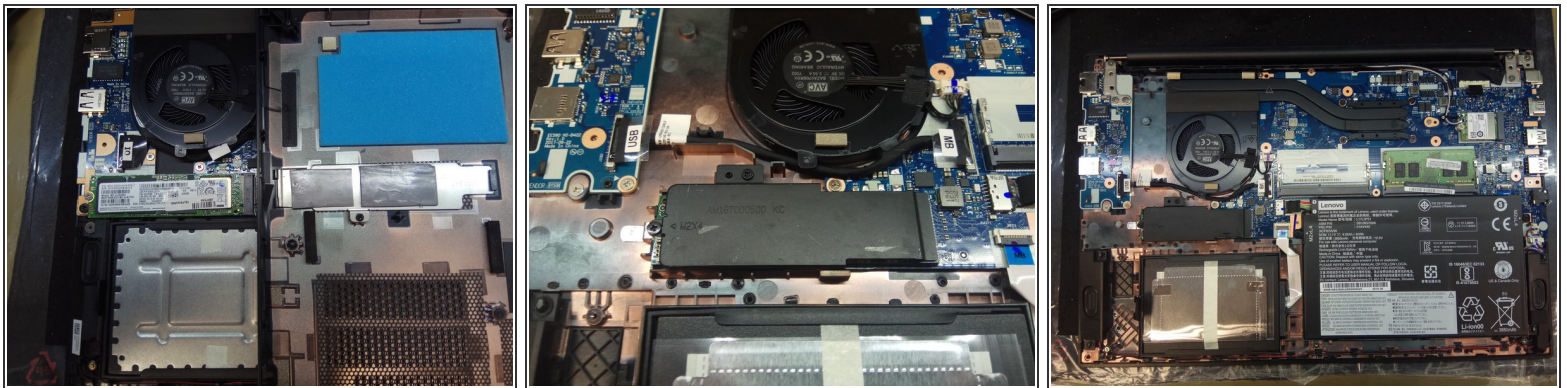
- [Essential Electronics Toolkit \(1\)](#)
-

Step 1 — Lenovo ThinkPad E485 Unboxing Teardown



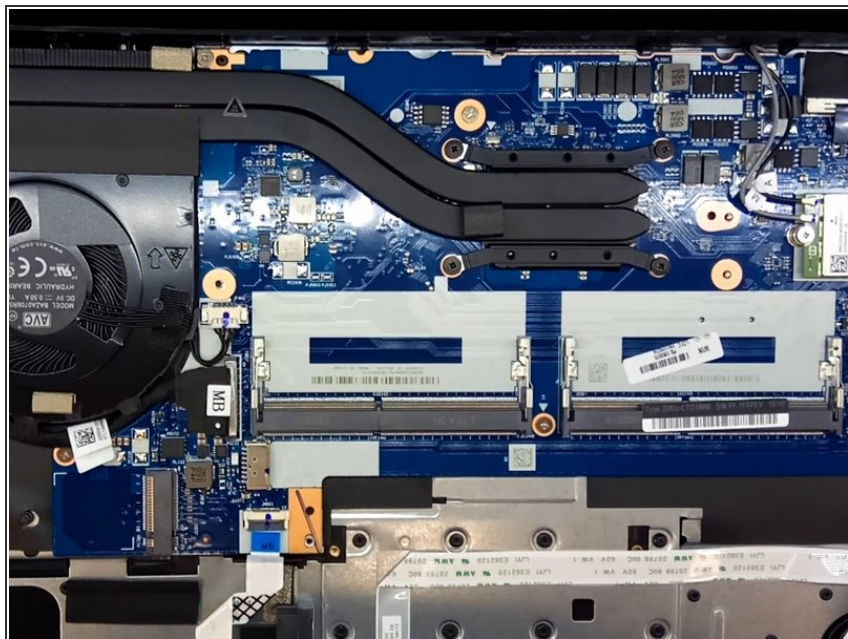
- Insert wisdom here.

Step 2



- Insert wisdom here.

Step 3



- Insert wisdom here.

This document was last generated on 2019-06-26 05:03:08 PM.