



Polaroid Z2300 Screen Replacement

This guide will show the necessary steps to replace the screen on a Polaroid Z2300.

Written By: Bradley Marcum



INTRODUCTION

This guide will show you the required steps to complete a screen replacement.

TOOLS:

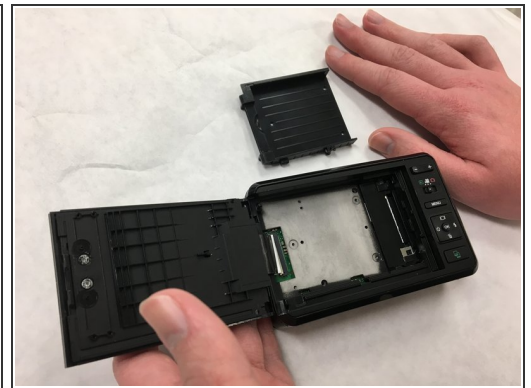
- [iFixit Opening Tools](#) (1)
 - [JIS #00 Screwdriver](#) (1)
-

Step 1 — Screen



- Flip the camera to back side up and open the paper/screen door.

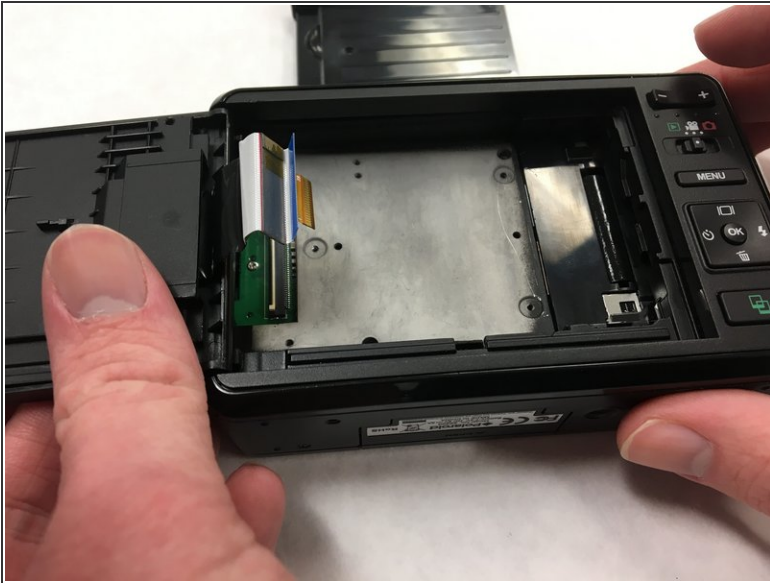
Step 2



- Locate and remove the two 3.5 mm long screws on the inside tray.
- Screw head: JIS J00
- Remove the inside tray.

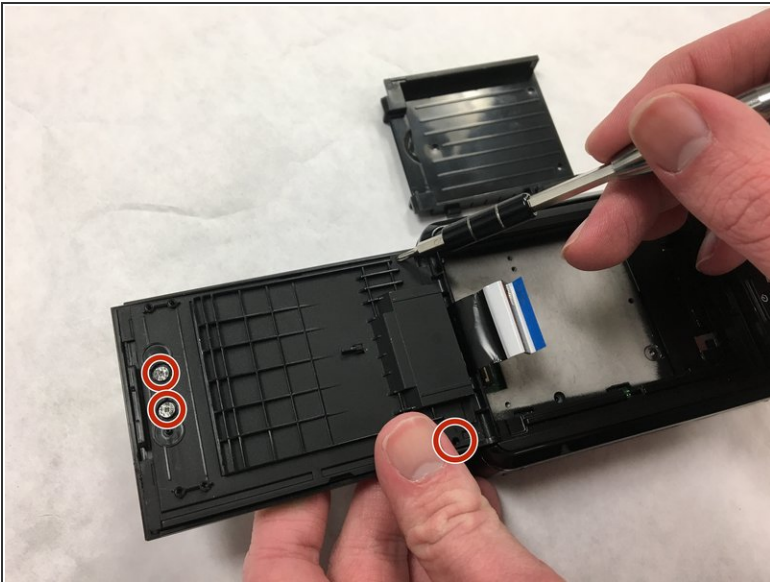
⚠ The screws are very small! Be careful not to strip or lose them.

Step 3




- Gently pull the ribbon away from the logic board. This will allow the screen to separate from the rest of the camera.

Step 4



- Locate and remove four 3.5 mm long screws on the inside of the door.
- Screw head: JIS J00

 The screws are very small! Be careful not to strip or lose them.

Step 5



- Once the panel is removed, the malfunctioning screen will slide out and can be replaced.

To reassemble your device, follow these instructions in reverse order.

This document was last generated on 2019-08-01 10:28:35 AM.