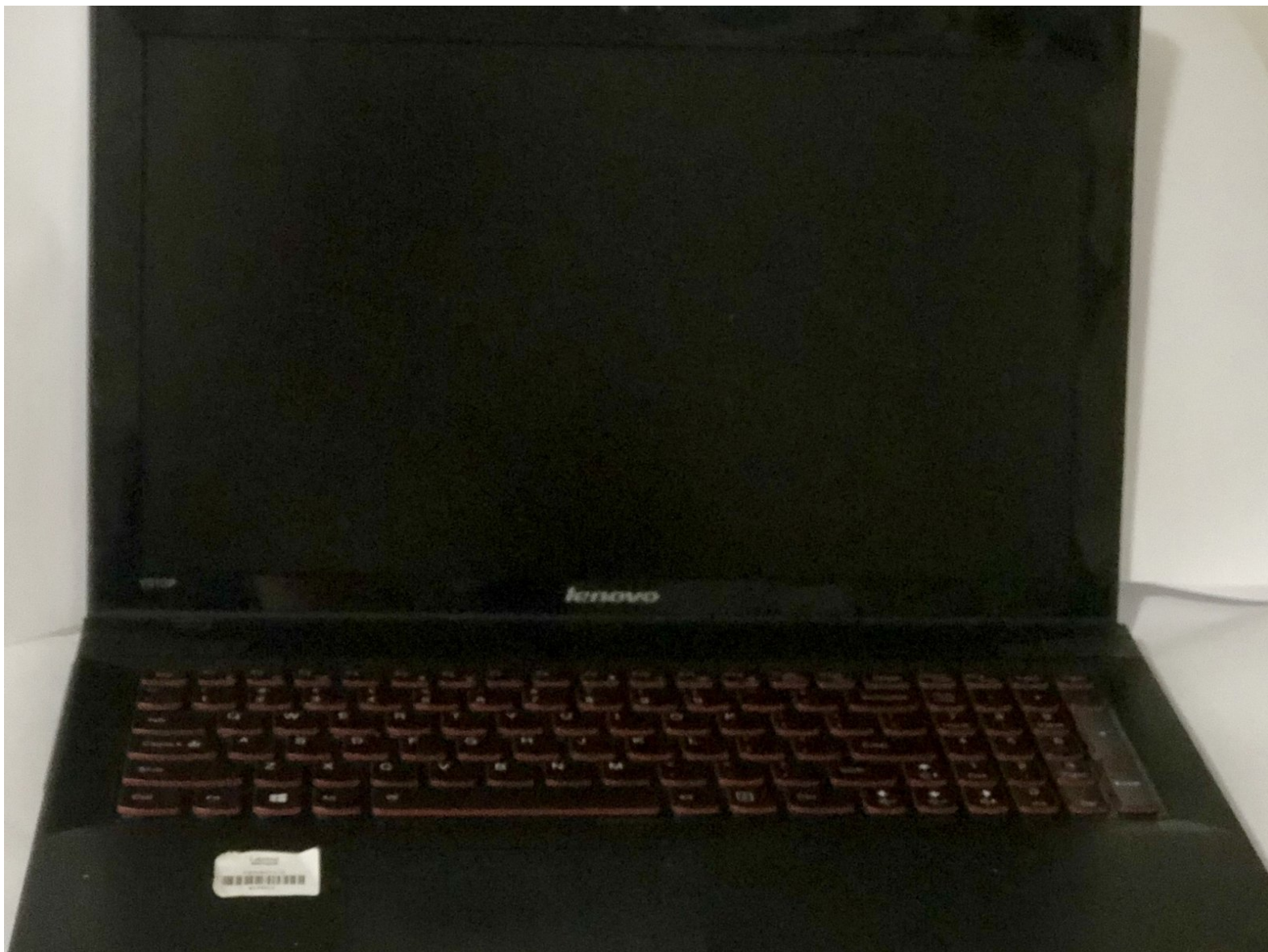




# Lenovo IdeaPad Y510P Hard Drive Replacement

How to remove and replace a hard drive.

Written By: Joelyn Hanson



 **TOOLS:**

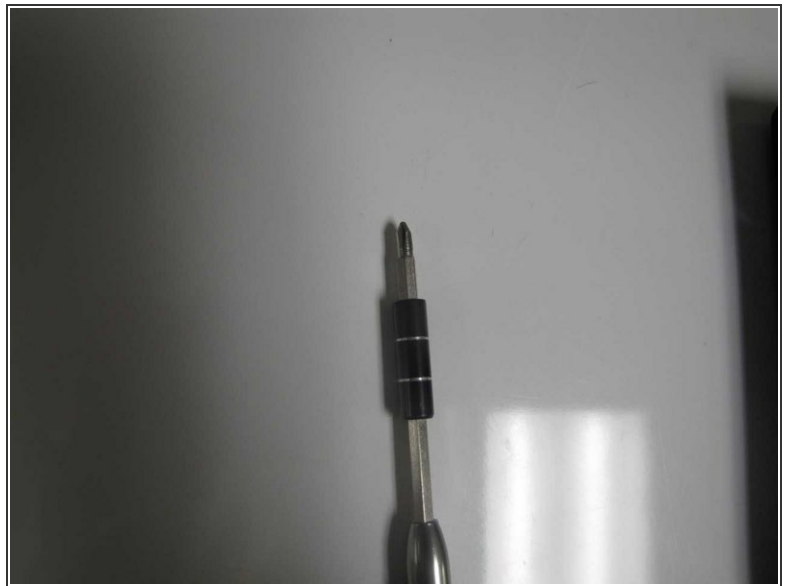
- [JIS Driver Set](#) (1)
-

## Step 1 — Hard Drive



- Remove the battery.

## Step 2



- Take a JI head screw driver and remove the screws holding the back panel down.
- There should be 9 screws in total.

### Step 3



- It should be easy to lift the panel up and off.
- If it is difficult then there is most likely a screw still in.

### Step 4



- When the panel comes off the back will look like this.
- Outlined in red is where the hard drive will be.
- Gently lift and remove the hard drive.

To reassemble your device, follow these instructions in reverse order.