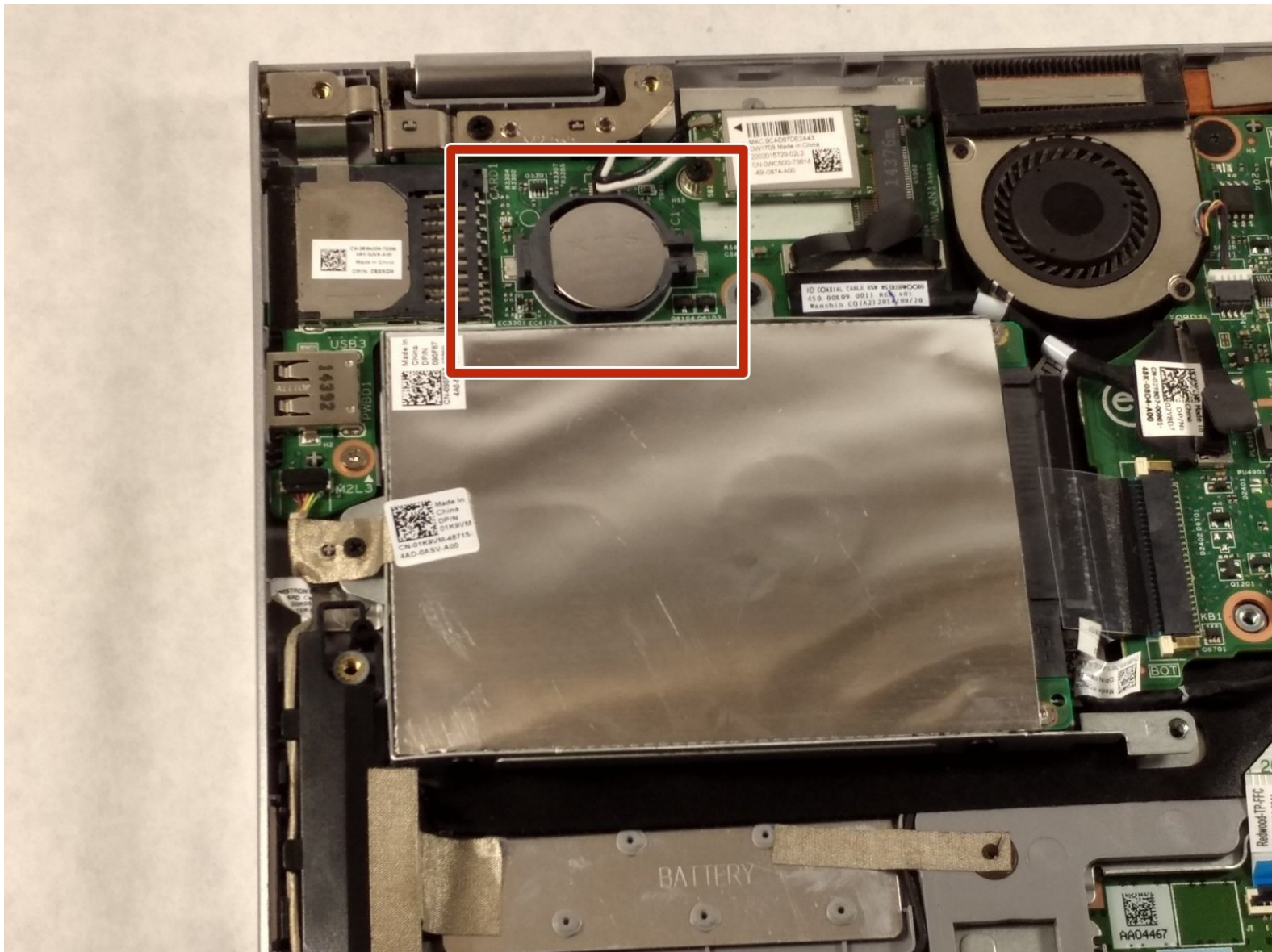




Dell Inspiron 3148 CMOS Battery Replacement

Use this guide to replace the CMOS battery in your Dell Inspiron 3148.

Written By: Christopher Gravelle



INTRODUCTION

Is your computer constantly resetting the time and date? Consider using this guide to replace the CMOS battery in your device.

TOOLS:

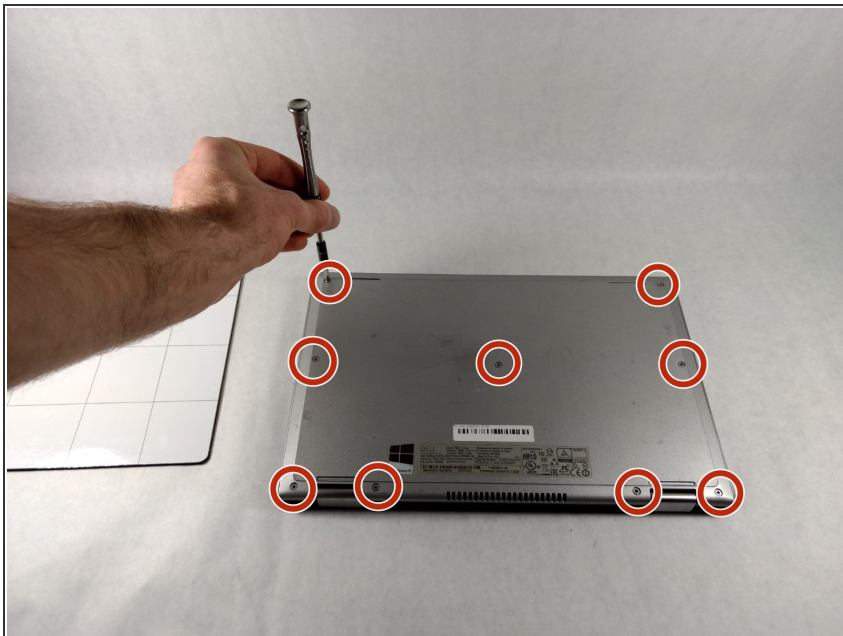
- [Phillips #1 Screwdriver](#) (1)
 - [iFixit Opening Tools](#) (1)
 - [Tweezers](#) (1)
-

Step 1 — Back Panel



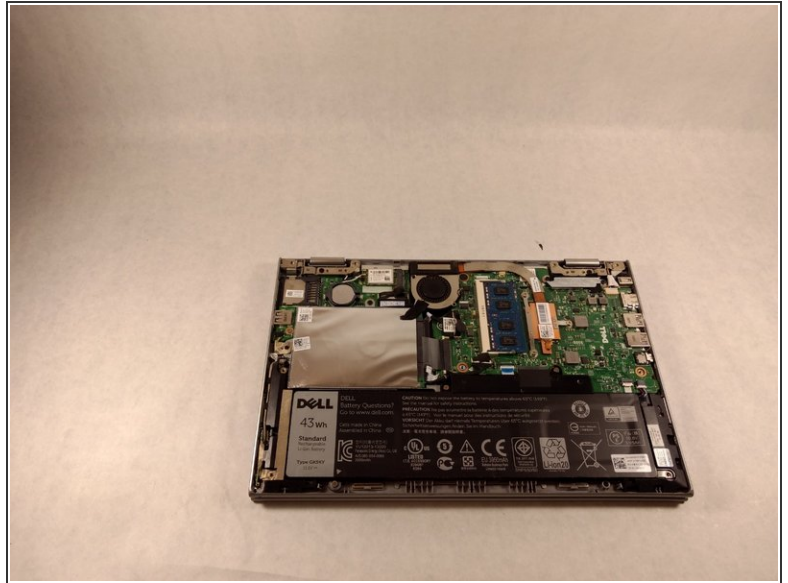
- Ensure the device is powered off and unplugged. Close the device and orient it face up, with the hinges further away from you.
- Flip the device over so the backside is facing you.

Step 2



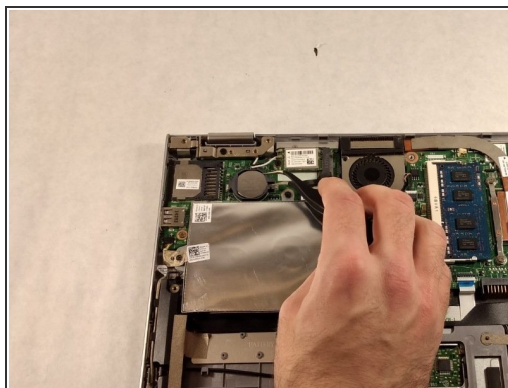
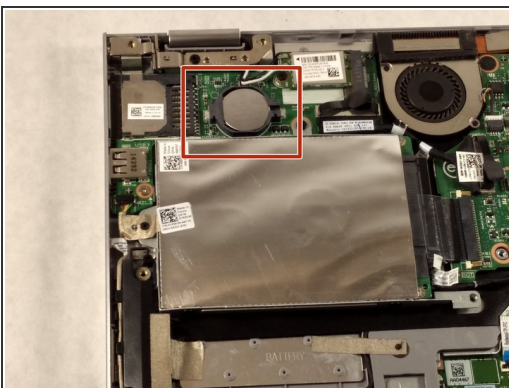
- Using the Phillips #1 screwdriver, remove all nine 7mm screws.

Step 3



- Using the plastic opening tool, pull the back panel upward. Move the opening tool along the edge of the device and lift the panel off of your device.
- ⓘ Be aware, the back panel is kept in place by magnetic clips. They will offer some resistance, but continue to gently leverage upwards.

Step 4 — CMOS Battery



- Using a pair of tweezers, lift the exposed edge of the CMOS battery upward.
- Once the CMOS battery has been loosened, remove it from the device.

To reassemble your device, follow these instructions in reverse order.