



Gateway NV57H50u Battery Replacement

This guide will show how to remove and replace the battery for a Gateway NV57H50u laptop.

Written By: Aaron Allison



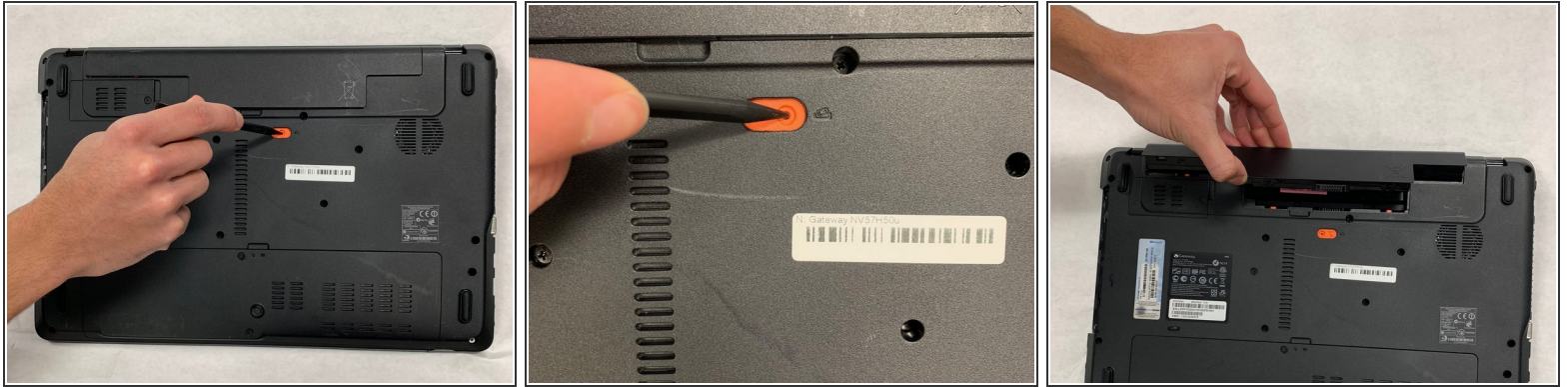
INTRODUCTION

The laptop should be disconnected from a wall outlet before removing battery and the battery should be removed before any other component is removed.

TOOLS:

- Spudger (1)
-

Step 1 — Battery



- Push orange locking tab with spudger right, until battery lifts out of place.

⚠ Laptop should be unplugged from power supply before removal.

To reassemble your device, follow these instructions in reverse order.

This document was last generated on 2019-07-18 10:08:08 AM.