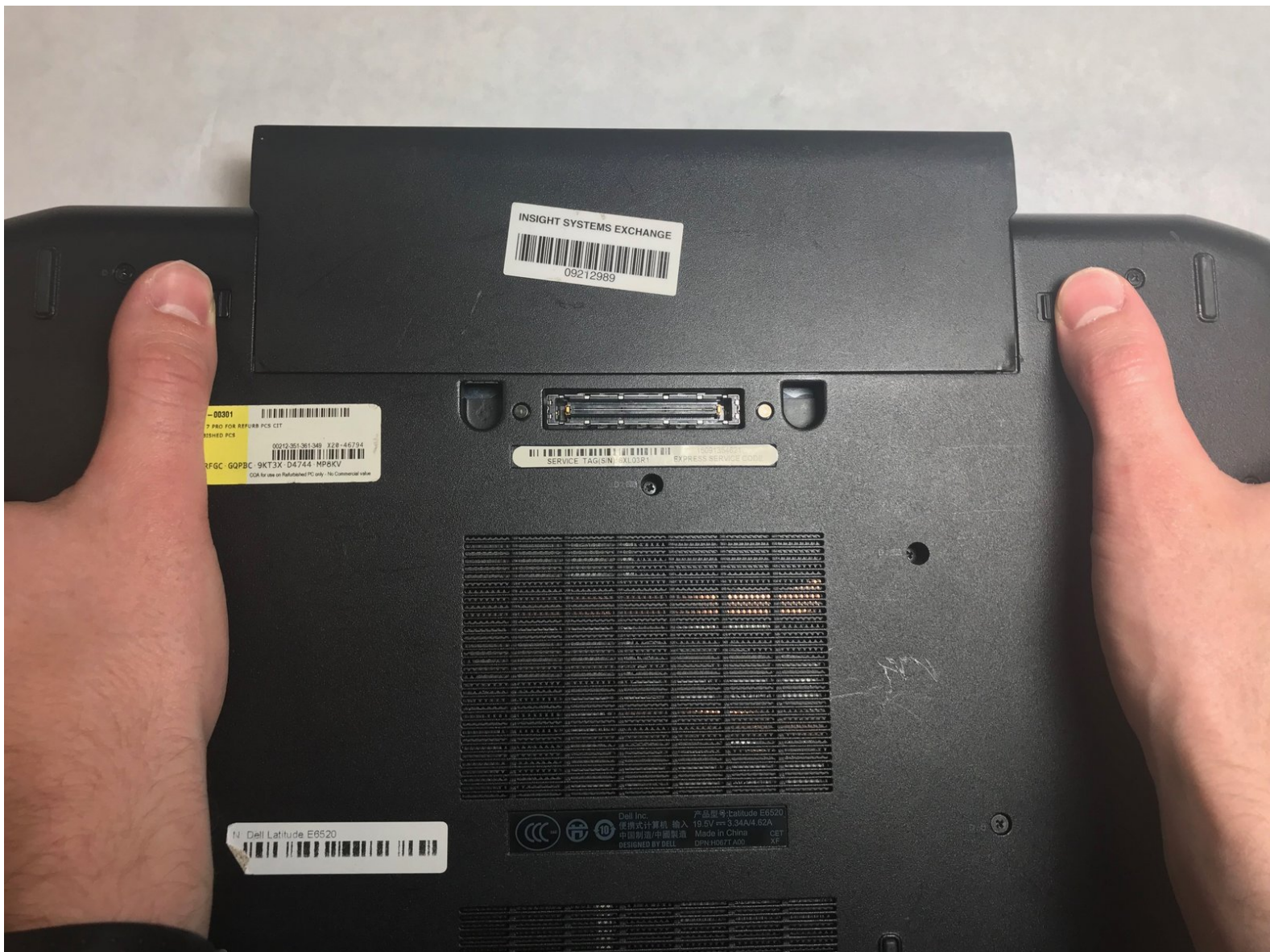




# Dell Latitude E6520 Battery Replacement

This guide demonstrates a simple procedure to properly remove and replace the Dell Latitude E6520 battery.

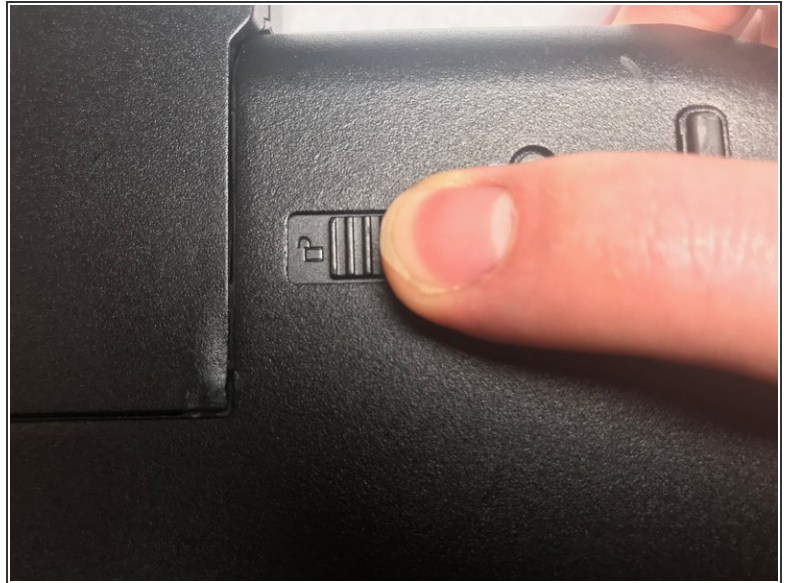
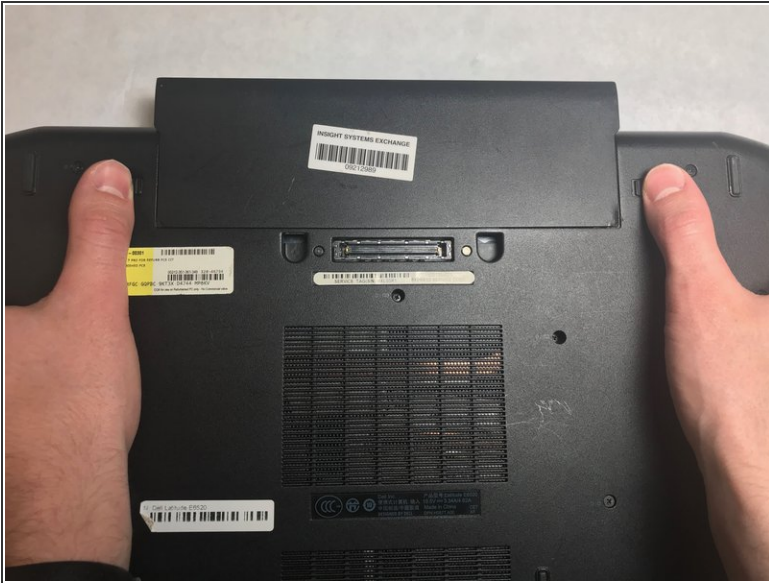
Written By: Alec Weiss



## **INTRODUCTION**

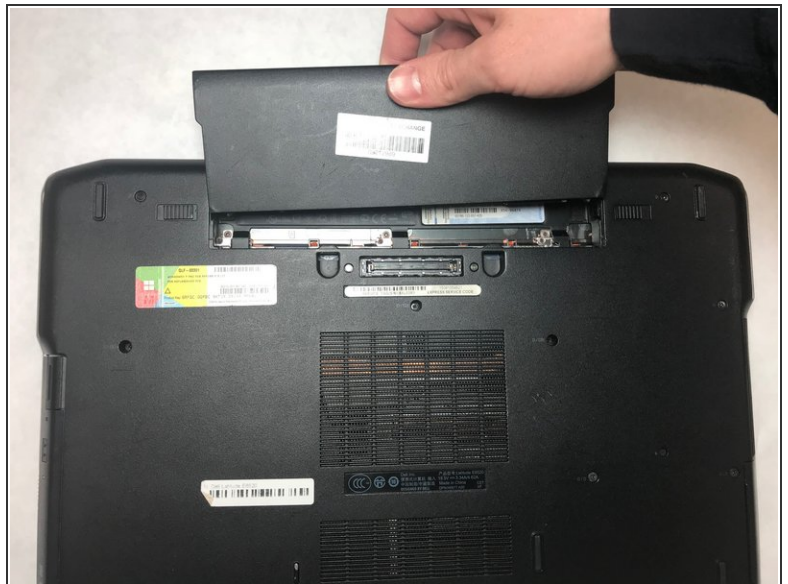
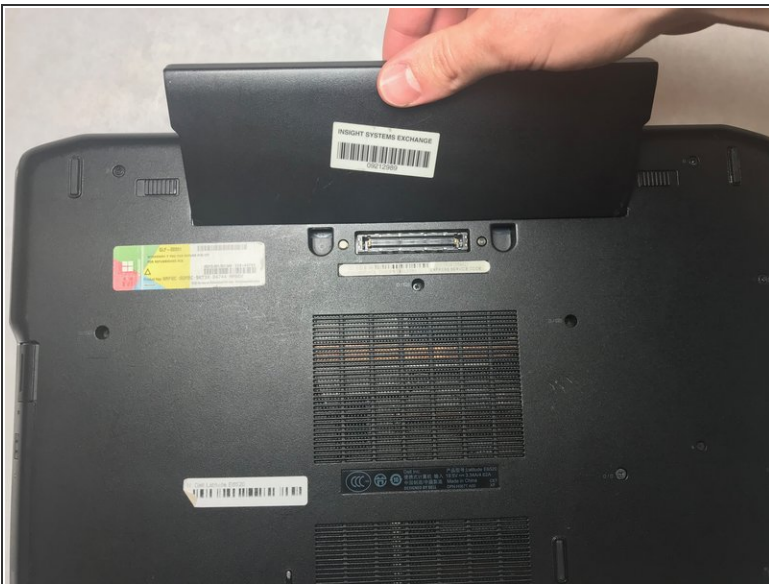
The Dell Latitude E6520 supports a Lithium Ion battery in 3-cell, 6-cell, and 9-cell options. Defective or different capacity batteries are seamlessly replaced using the process outlined in this guide.

## Step 1 — Battery



- With the laptop closed and the bottom side facing up, slide the two battery latches towards the sides of the laptop.
- ⓘ When the latches are unlocked, a small logo resembling an open padlock will become visible.

## Step 2



- Grasp the battery from the top and pull upward.

To reassemble your device, follow these instructions in reverse order.

This document was last generated on 2019-01-15 10:23:00 AM.