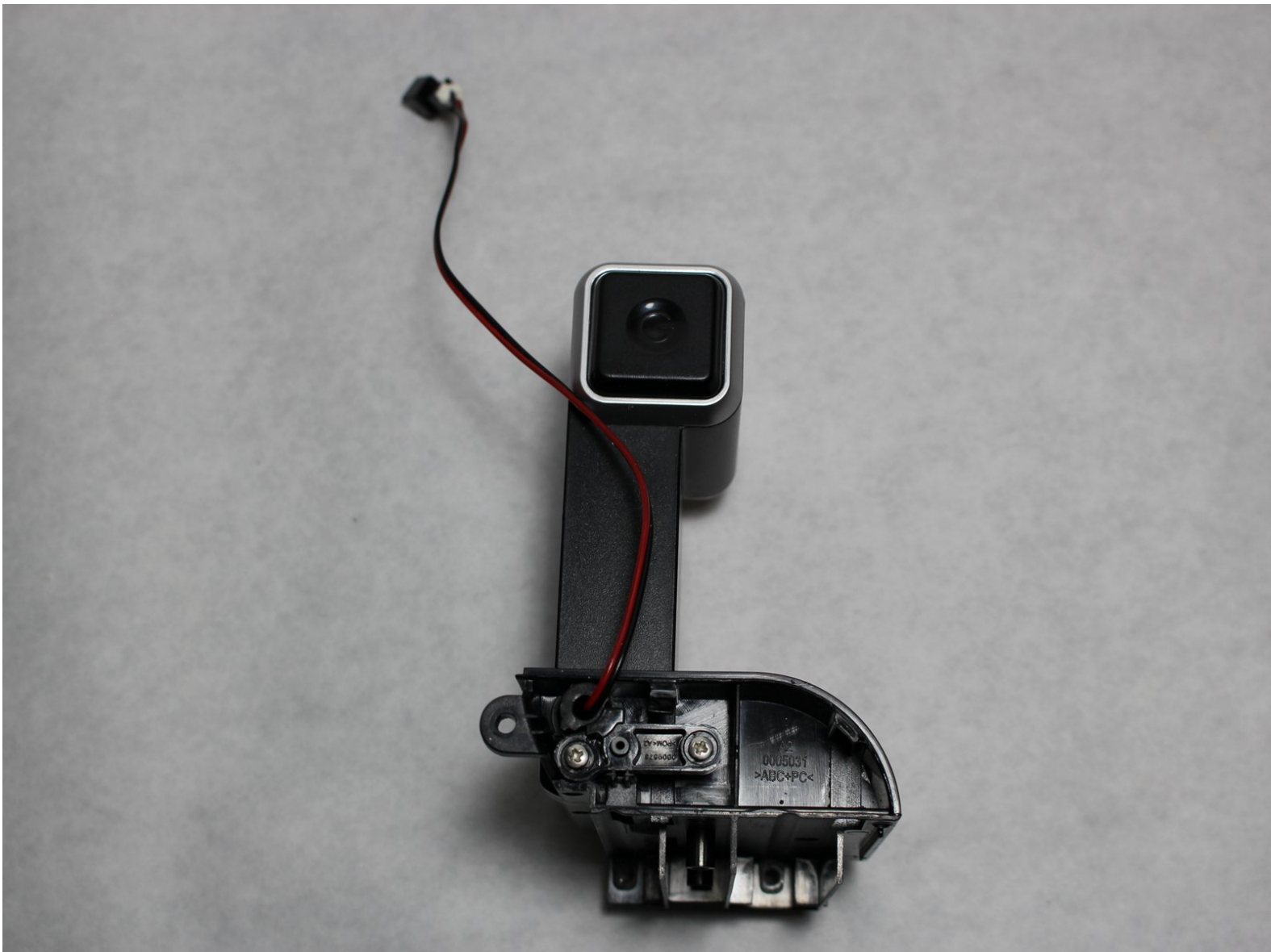




Ninja Coffee Bar® Single-Serve System Frother Replacement

This guide will show you how to remove the upper panel of the Ninja Coffee Bar® Single-Serve System and remove the Frother for replacement.

Written By: CJ Berg



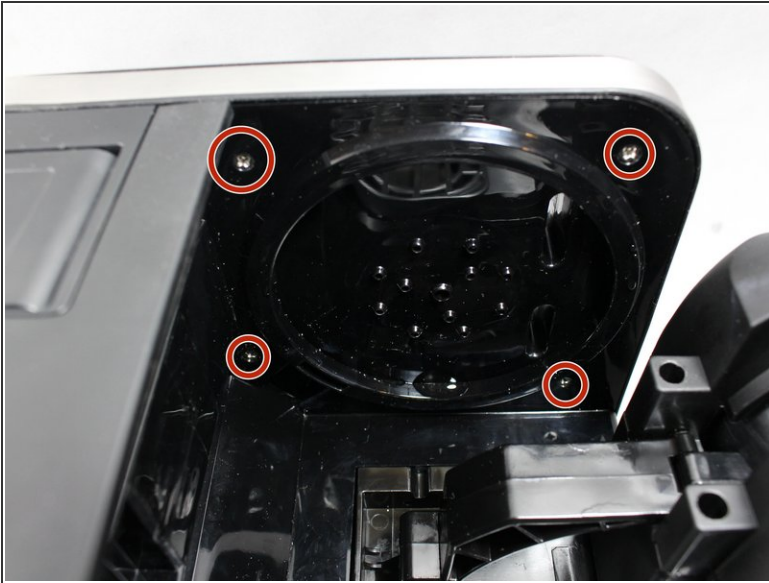
INTRODUCTION

If your frother unit is no longer providing you with delicious, foamy drinks then it may be time to replace the frother unit on your device. Use this guide to replace your frother and reclaim the ability to brew up specialty drinks with your Ninja Single Serve Coffee System.

TOOLS:

- [Phillips #1 Screwdriver](#) (1)
 - [iFixit Opening Tools](#) (1)
-

Step 1 — Frother



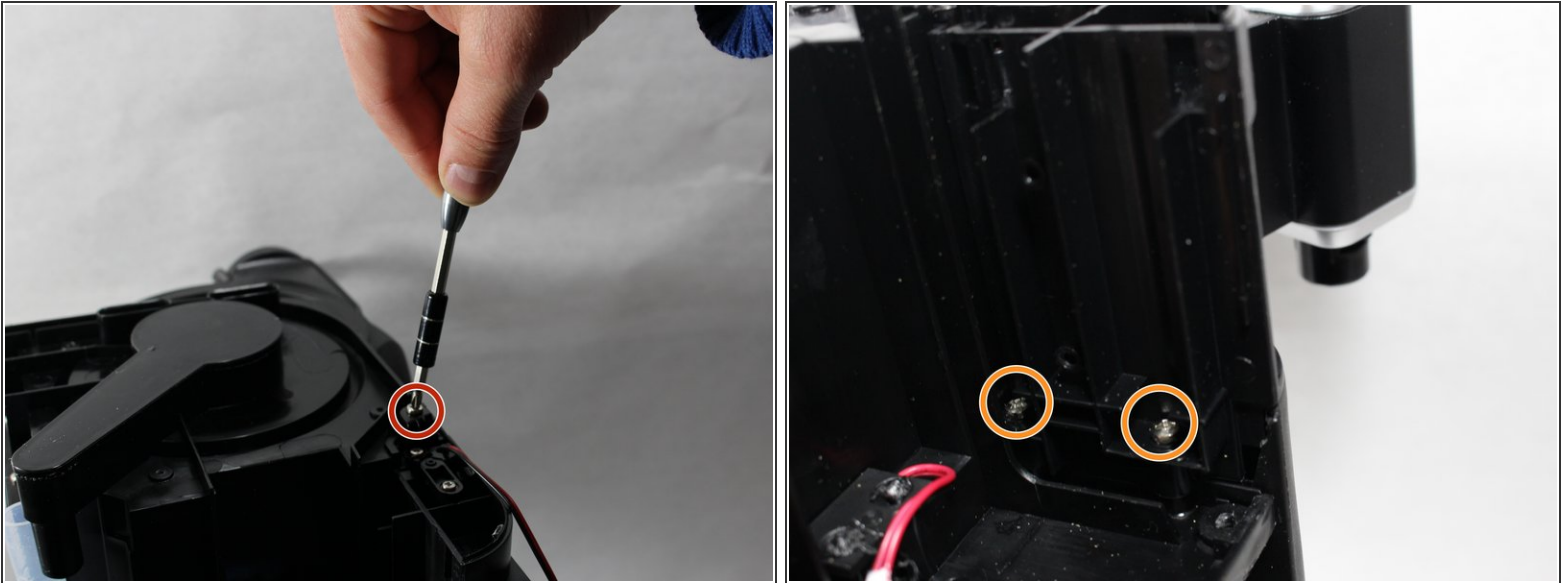
- Remove four 6mm #1 Phillips head screws from under the basket area.
- Remove the single 6mm #1 Phillips head screw from the side of the unit.

Step 2



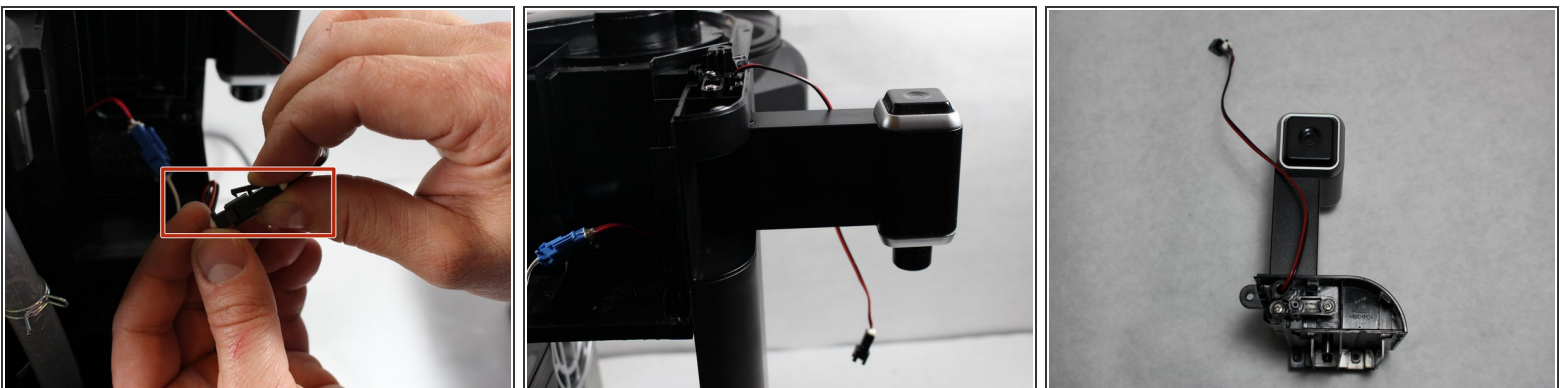
- Gently pry the upper cover off the unit above the brew basket and above the water reservoir base and along the side of the upper cover.

Step 3



- Remove the single 6mm #1 Phillips head screw from the top of the unit. (The two smaller screws should remain attached.)
- Using an extension, remove the two 6mm Phillips head screws from the side of the frother motor pivot.

Step 4



- Pinch power connector and pull lightly to separate.
- Pull motor straight up to separate from unit.

To reassemble your device, follow these instructions in reverse order.