



WowWee CHiP Robot Dog Battery Replacement

A guide on how to replace WowWee CHiP Robot Dog battery.

Written By: Bennett Markley



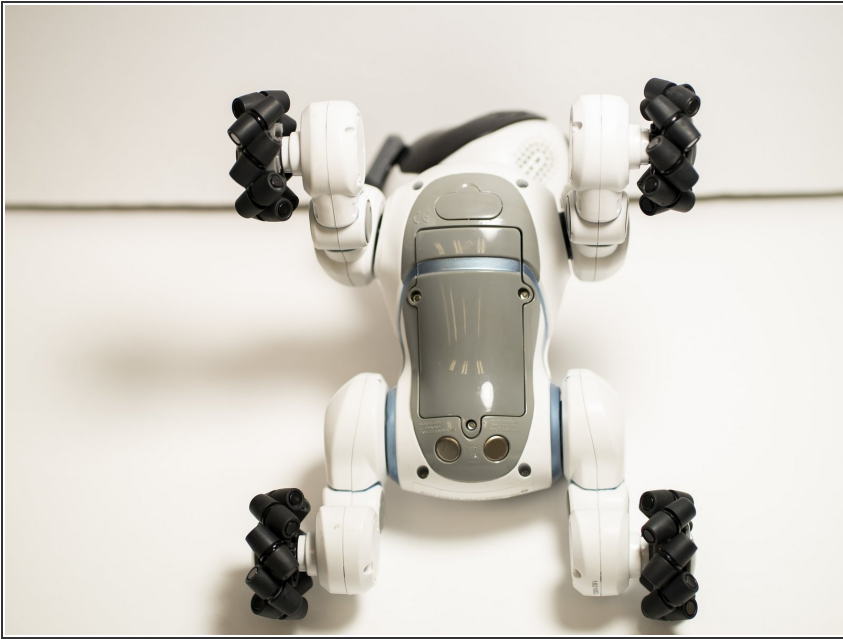
INTRODUCTION

The WowWee CHiP Robot Dog is a robotic dog that comes with a watch, charging bed, and magnetic ball. CHiP can lay down, fetch, bark, charge on its own, and respond to voice commands.

TOOLS:

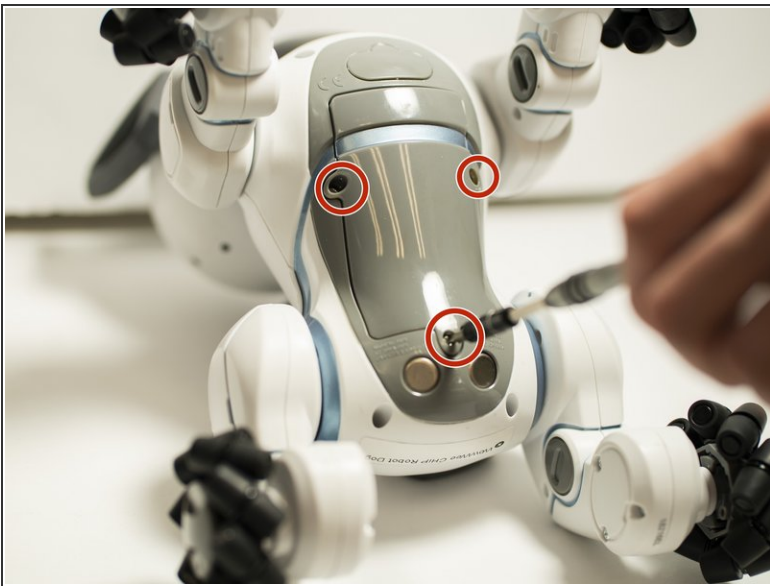
- [Mako Driver Kit](#) (1)
-

Step 1 — Battery



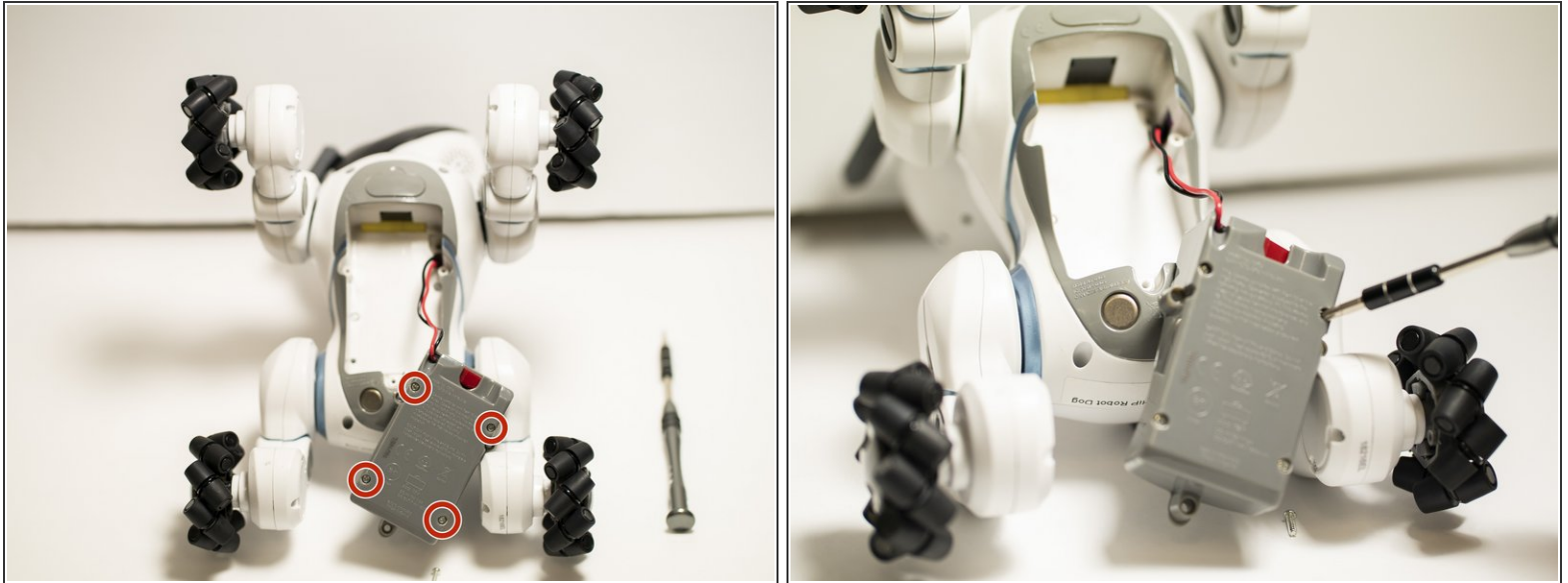
- Place CHiP on its back so that its stomach is facing you.

Step 2



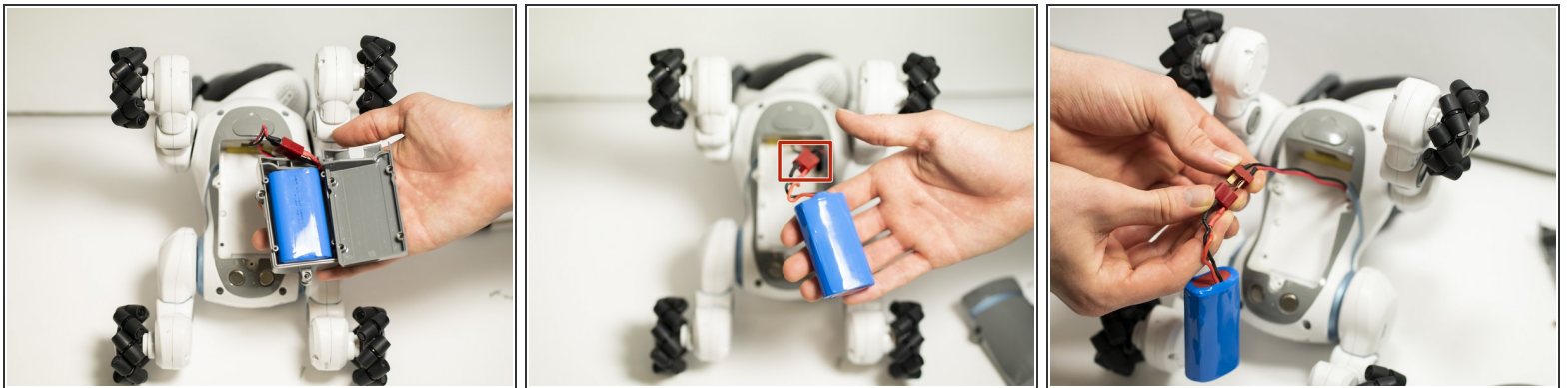
- There are three small hex screws connecting the battery to CHiP. Remove all screws with a hex screwdriver and remove battery casing.

Step 3



- Once the top face of the battery is off, you will see a small rectangular box that the batteries are inside. There are 4 Phillips head screws in the box. Remove all screws with a Phillips head screwdriver.

Step 4



- Once the battery is removed from body, the battery should be connected by a red and black wire. There is a red rectangular connector that easily pulls apart. Pull apart the red rectangular connector.

To reassemble your device, follow these instructions in reverse order.

