



# Plum Optimax 10 Battery Replacement

How to replace a battery in the Plum Optimax 10.

Written By: Samantha Wright



## INTRODUCTION

The plum Optimax user manual recommends not removing the battery but it is possible if necessary. Be sure to be cautious when using the tools to avoid damaging internal components or puncturing the battery.

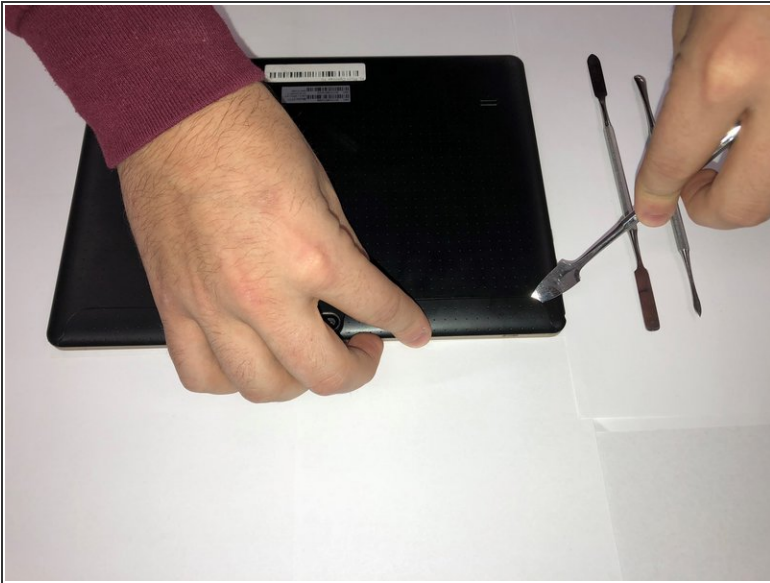
---



### TOOLS:

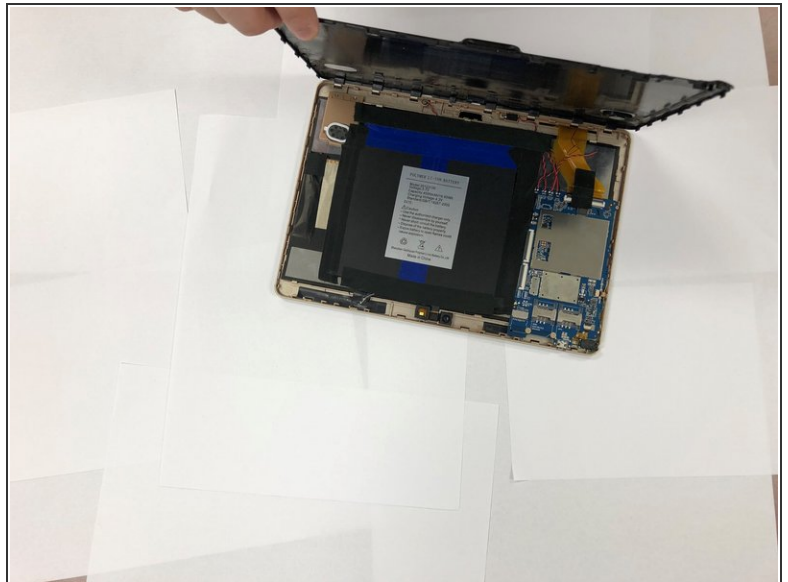
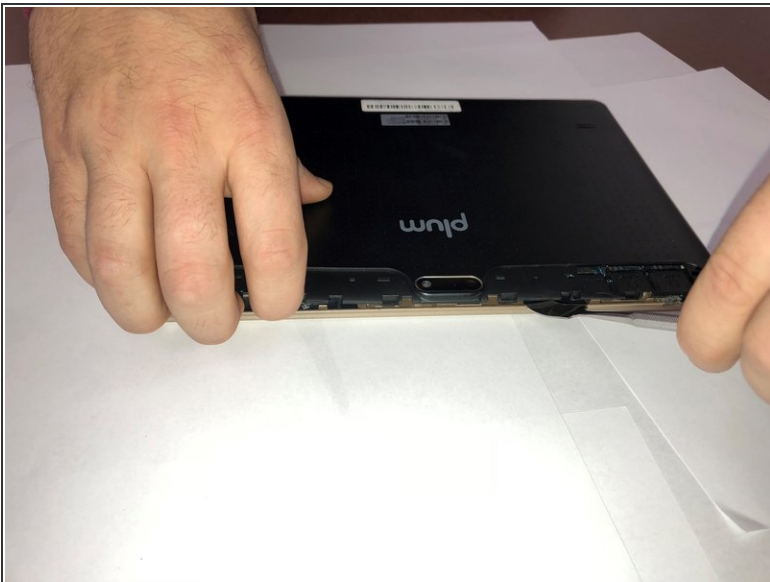
- [Metal Spudger](#) (1)
  - [Spudger](#) (1)
-

## Step 1 — Back Cover



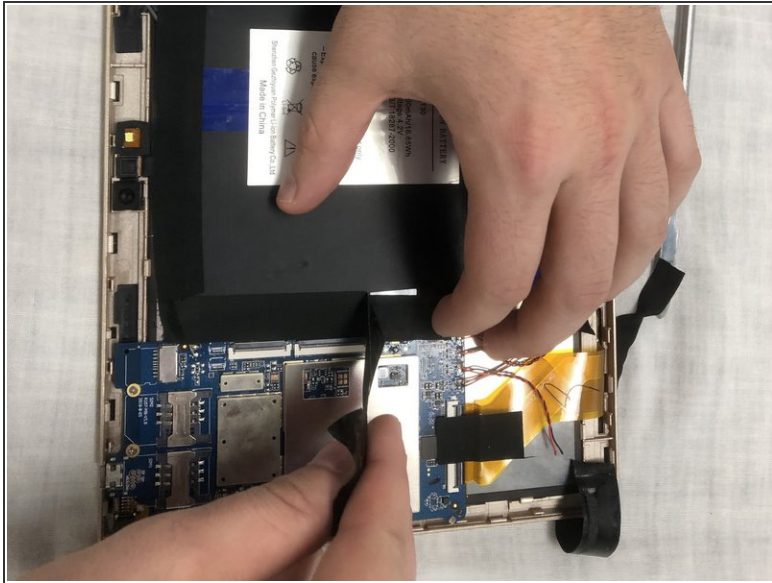
- Use spudger to remove small panels to the immediate left and right of the camera.

## Step 2



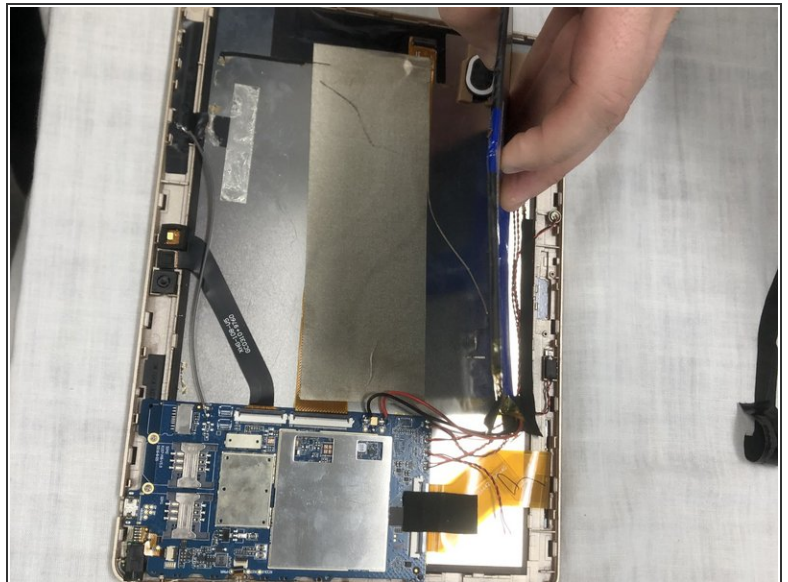
- Use spudger to begin lifting back cover.
- Then, create leverage and gently remove entire cover.

## Step 3 — Battery



- Remove electrical tape placed around the battery to keep it in place.

## Step 4



- Use the spudger as a wedge underneath the battery to assist in removal.
  - Once loosened with the spudger, the battery is now removed from the device.
- ⚠ Always use a plastic opening tool or nylon spudger to remove batteries. Metal tools can puncture a battery and potentially catch on fire.

To reassemble your device, follow these instructions in reverse order.

This document was last generated on 2019-01-01 02:27:59 PM.