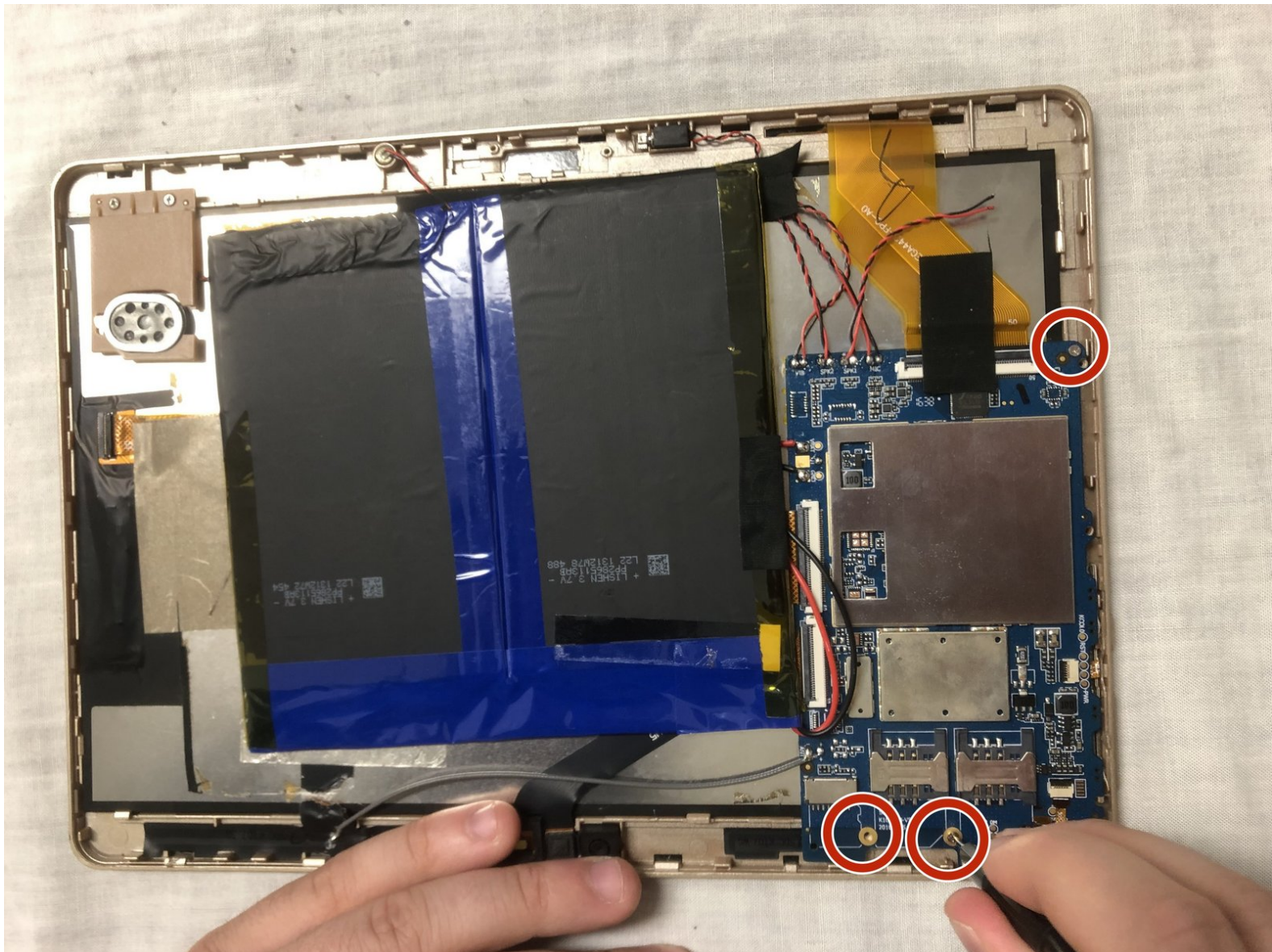




Plum Optimax 10 Motherboard Replacement

In this guide, we will be removing the motherboard of the Plum Optimax 10.

Written By: Samantha Wright



INTRODUCTION

Users will be removing the motherboard throughout this guide by removing three 2mm screws with a flat head screwdriver. Be sure to be cautious when handling small pieces.



TOOLS:

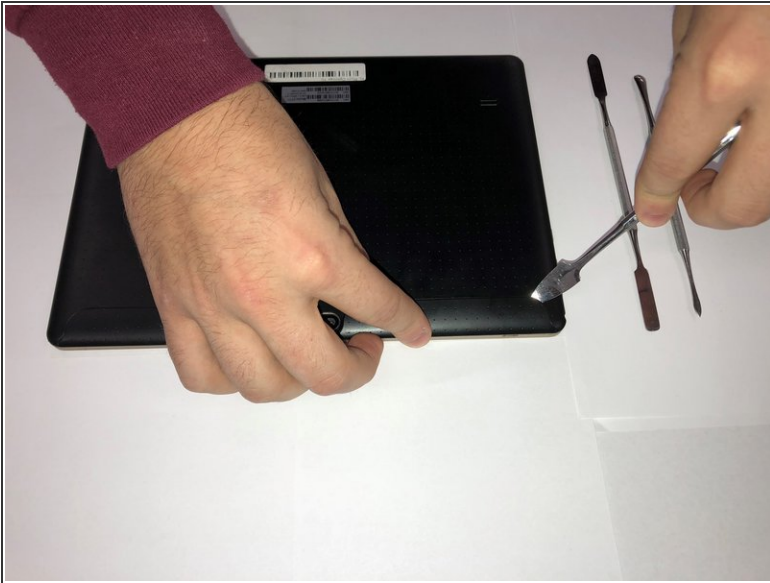
- [Spudger](#) (1)
- [iFixit Opening Tools](#) (1)
- [Magnetic Project Mat](#) (1)
- [1.5 mm Flathead Screwdriver](#) (1)



PARTS:

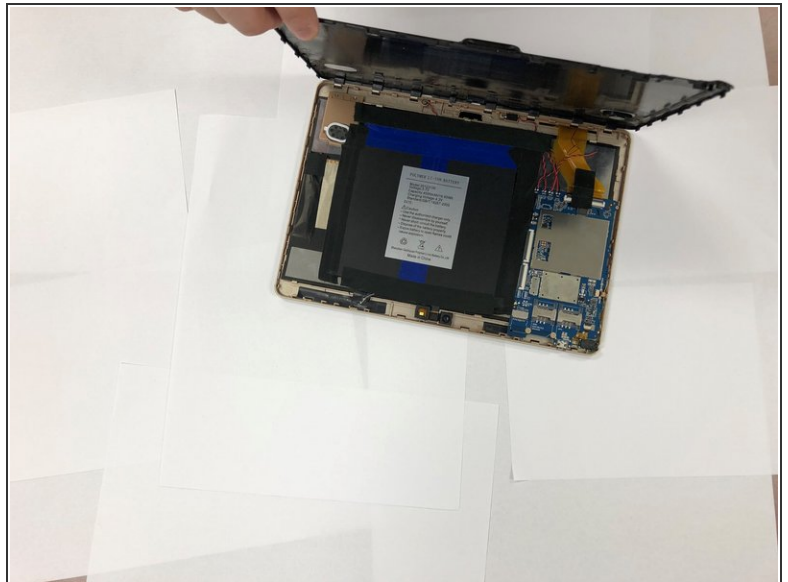
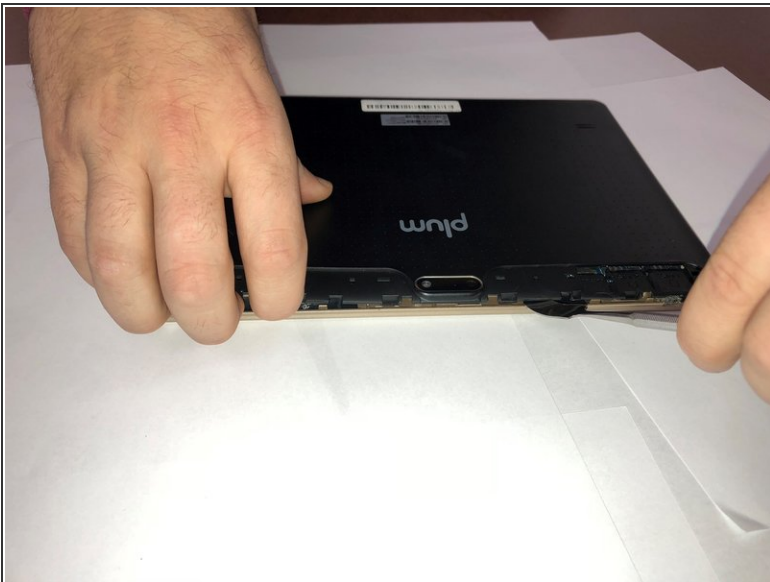
- [Flathead 3/32" or 2.5 mm Screwdriver](#) (1)
-

Step 1 — Back Cover



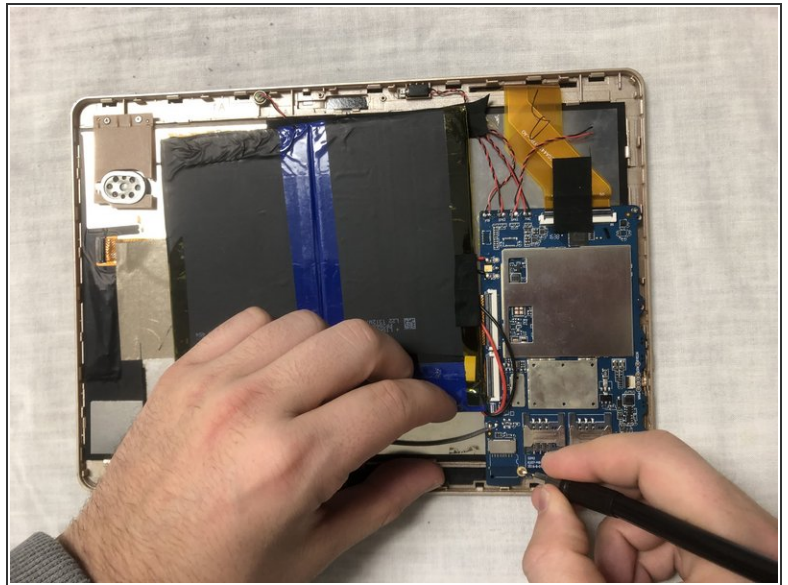
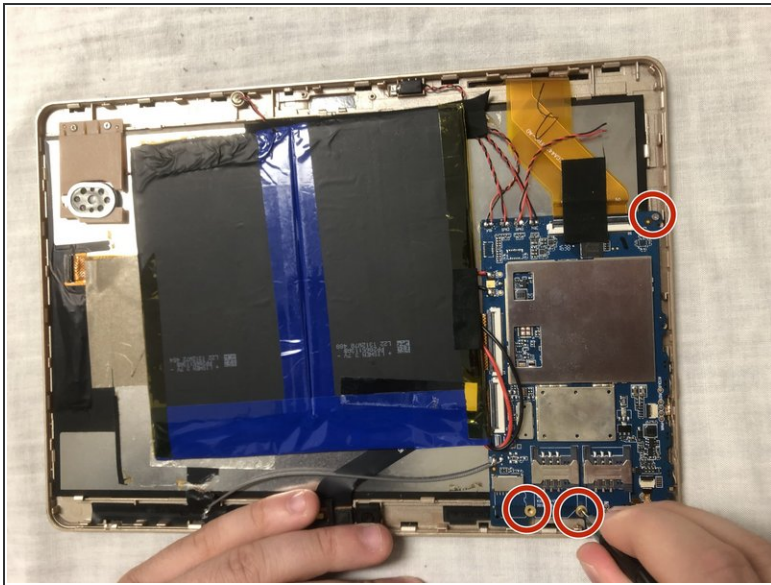
- Use spudger to remove small panels to the immediate left and right of the camera.

Step 2



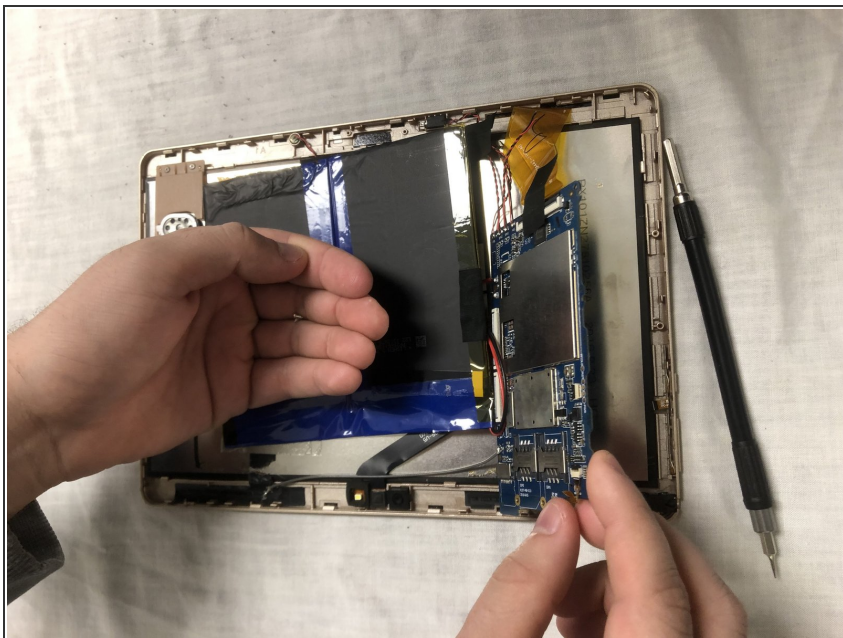
- Use spudger to begin lifting back cover.
- Then, create leverage and gently remove entire cover.

Step 3 — Motherboard



- Use flathead screwdriver tool to remove the three 2.5 mm screws shown in the photo. Two screws are located at the base of the motherboard and there is one screw located at the top.

Step 4



- Once screws are removed, carefully remove the motherboard out of encasing.

To reassemble your device, follow these instructions in reverse order.

