



# Capresso Infinity Outside Casing Replacement

This guide provides the steps to replace the metal outside casing of the Capresso Infinity Coffee Grinder.

Written By: Nina Mackin



---

## INTRODUCTION

If you need to replace the outside casing, follow this guide. The outside casing is essential to keeping everything inside in place, and protecting the internal structures of the device. If there is cosmetic damage or significant disfigurement, replacement of the metal outside casing is suggested. For this guide, you will need the Torx Security T10 Bit Screwdriver as well as the extension bit.

---

### TOOLS:

- [T10 Torx Security Bit Screwdriver](#) (1)
-

## Step 1 — Metal Outside Casing



- Twist the top plastic container to the left counterclockwise.
- Pull upwards to remove.

## Step 2



- Twist the top burr to the left counter clockwise.
- Pull upwards to remove.

### Step 3



- Flip entire device upside down.
- Remove two rubber coverings on the back of the device.

### Step 4



- Remove four 11.59mm T10 screws.
- ⓘ The screws will have small circular washers under them. Put them aside for reassembly.

## Step 5



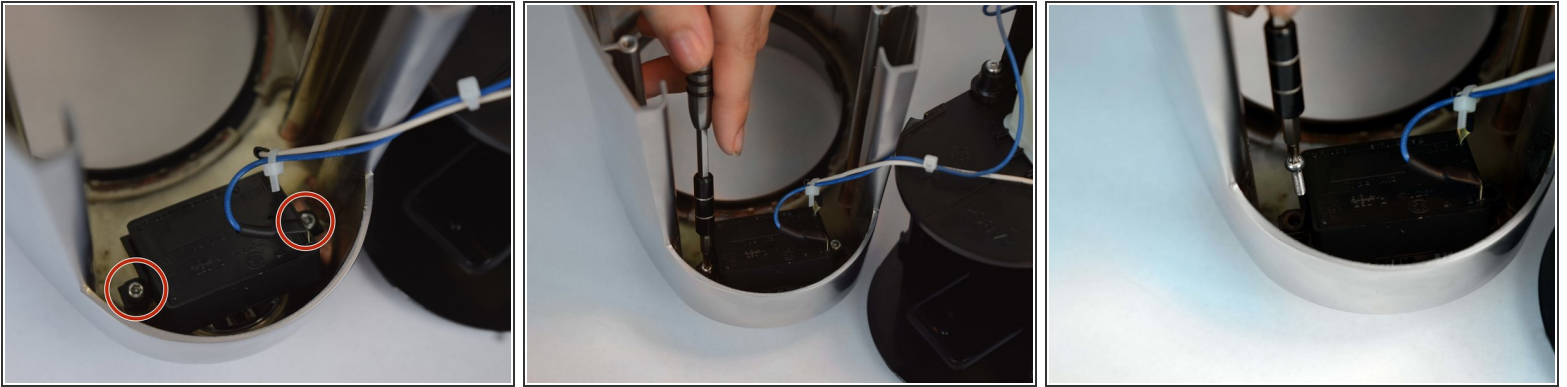
- Lift the metal outside casing off the black base.
- Flip the outside casing forward so you have access to the inside of it.

## Step 6



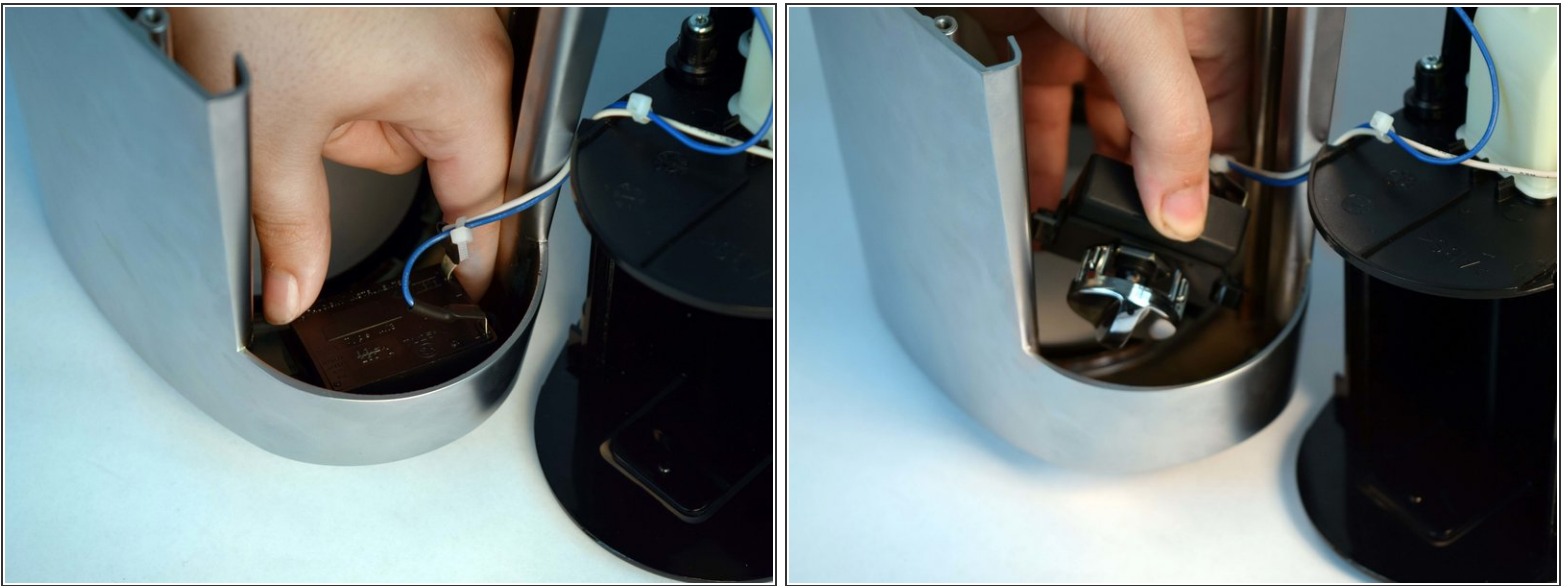
- Remove one 11.59mm T10 screw.
- Let the green wire fall, or place somewhere so it doesn't get in the way.
- ⓘ There will be a small metal retainer and washer, put them aside for reassembly.

## Step 7



- Remove two 11.59mm T10 screws.

## Step 8



- Remove the time/on switch by pulling upwards.

To reassemble your device, follow these instructions in reverse order.