



IBM ThinkPad T30 Optical Drive Replacement

A guide showing how to remove and replace the optical drive from the IBM ThinkPad T30.

Written By: Alex Kost



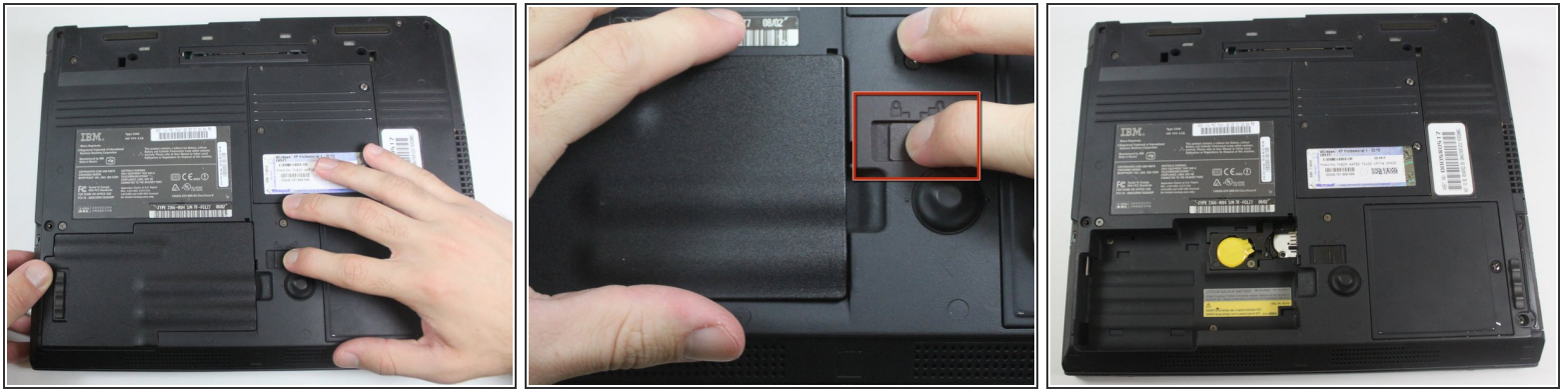
INTRODUCTION

Use this guide to replace your optical drive.

TOOLS:

- [Fingers](#) (1)
 - [Phillips #00 Screwdriver](#) (1)
-

Step 1 — Battery



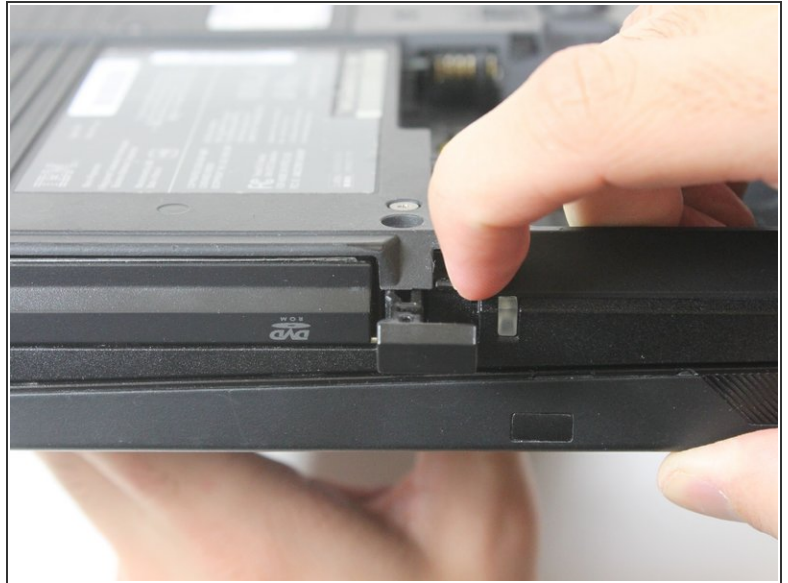
- ❗ Make sure the ThinkPad is off and the power supply is unplugged.
- Flip the ThinkPad upside down with the bottom facing you.
- Slide the latch on the underside of the ThinkPad to the right into the unlock position.
- While holding the latch in the unlock position, lift the battery out with your other hand.

Step 2 — Optical Drive



- Locate the 4.8mm Phillips #0 screw on the far left of the ThinkPad, closest to the edge and above the battery, and unscrew it with a Phillips #0 screwdriver.

Step 3



- On the side of the ThinkPad, locate a lock next to the optical drive. Use your fingernail to slide the lock to the right.

Step 4



- Once it is unlocked, a small tab will pop out. Pull on the tab with your fingers.
- The optical drive will easily slide out. Remove the optical drive.

To reassemble your device, follow these instructions in reverse order.