



# JVC KW-V820BT Top Panel Removal Replacement

Written By: Marshall Andersen



---

## INTRODUCTION

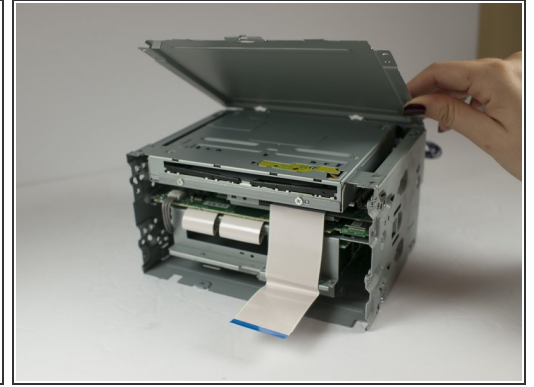
The removal of the top panel will allow access to additional serviceable components within the device, including the disc drive.

---

### TOOLS:

- [Phillips #0 Screwdriver](#) (1)
-

## Step 1 — Top Panel Removal



- Remove seven 1/64 x 3/16" screws from the top panel using the Phillips #0 screwdriver.
- Remove the top panel.

To reassemble your device, follow these instructions in reverse order.