



Lenovo Thinkpad Edge E545 Battery Replacement

This guide will show you how to correctly remove the battery out the laptop.

Written By: Jalin Shavers



INTRODUCTION

Before beginning, make sure your device is completely powered down as removing the battery while the computer is on can cause damage. To put the battery back, pop the battery in the slot.

Step 1 — Battery



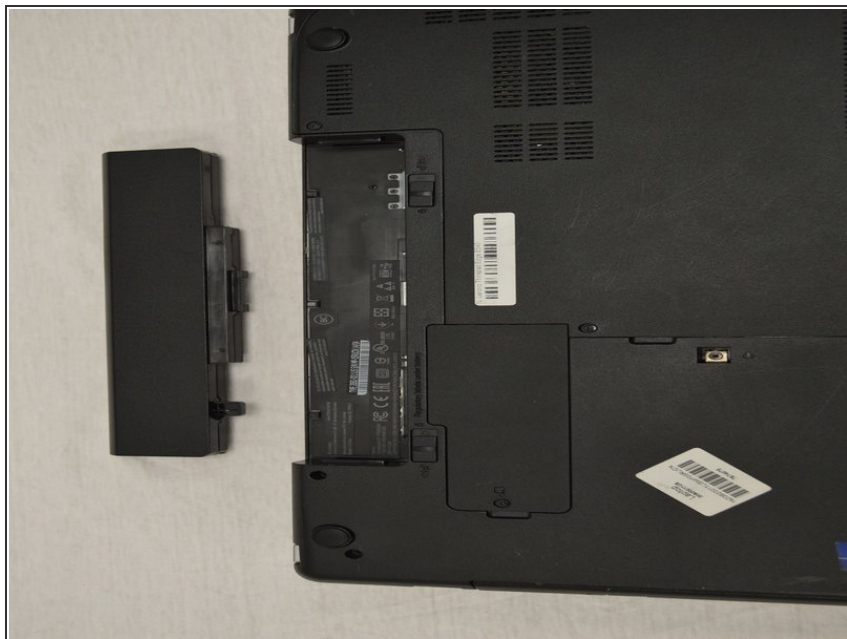
- First, flip the laptop over as shown in the photo.
- ⚠ Make sure device is fully powered down before removing battery.

Step 2



- Below the battery are two small tabs. These function as a lock for the battery.
- Push the tabs towards each other to release the battery.

Step 3



- Remove the battery from the device.

To reassemble your device, follow these instructions in reverse order.

This document was last generated on 2019-08-22 06:13:58 AM.