



Microsoft Lumia 640 LTE Screen Replacement

A guide on how to replace the front screen on a Microsoft Lumia 640 LTE.

Written By: Nick Emmert



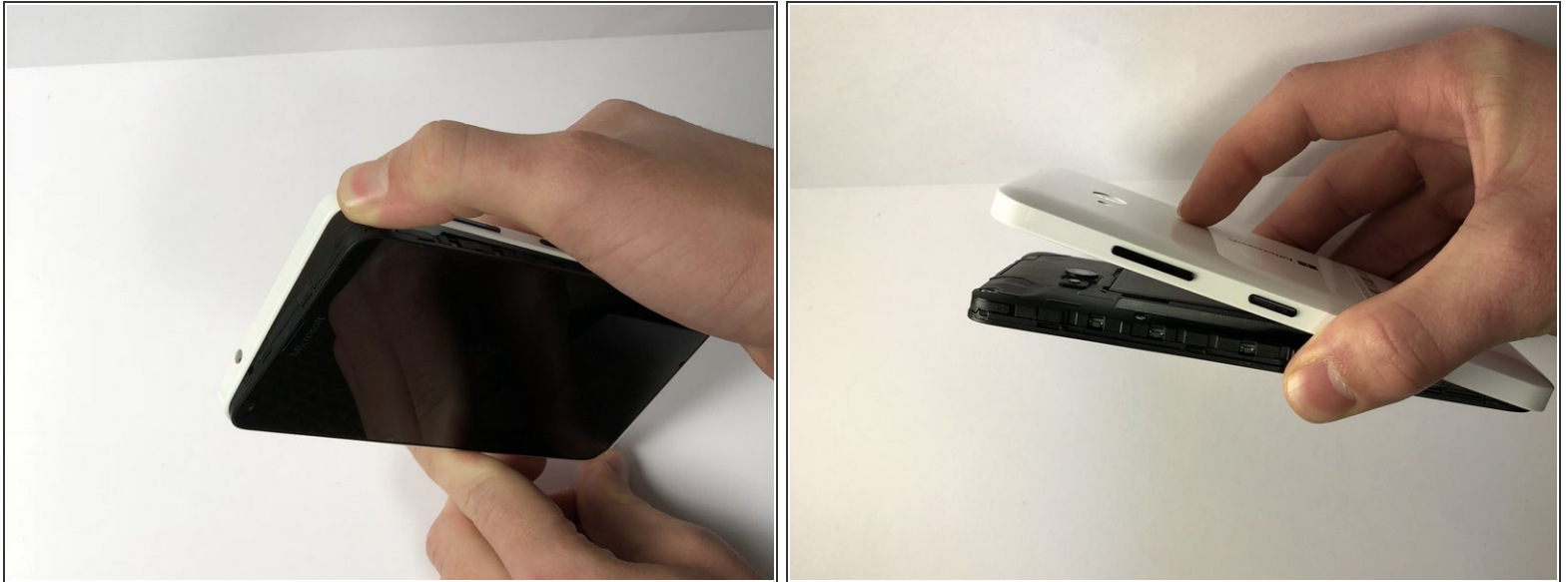
INTRODUCTION

This guide is used to help users to remove the screen and replace with another for Microsoft Lumia 640 LTE.

TOOLS:

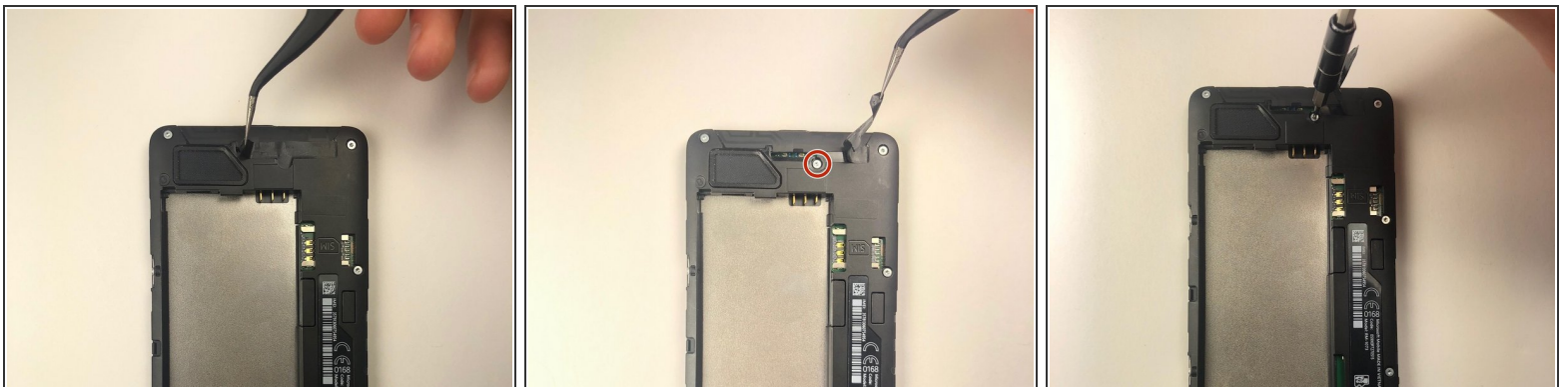
- [Fingers](#) (1)
 - [T4 Torx Screwdriver](#) (1)
 - [Tweezers](#) (1)
 - [iFixit Opening Tools](#) (1)
-

Step 1 — Back Cover




- Use your thumb or fingernail on the edge/corner of the phone to pry the back cover off the phone.

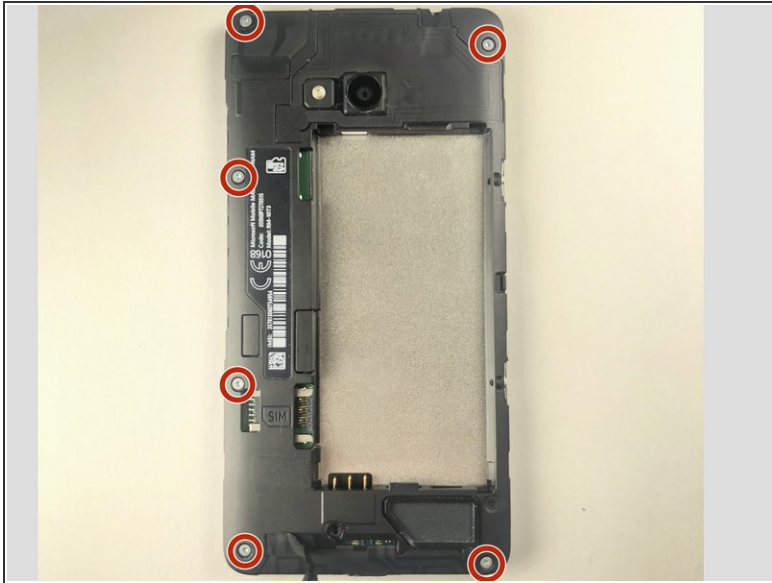
Step 2 — Screen



- Use the tweezers to pull back the sticker, revealing the screw underneath.

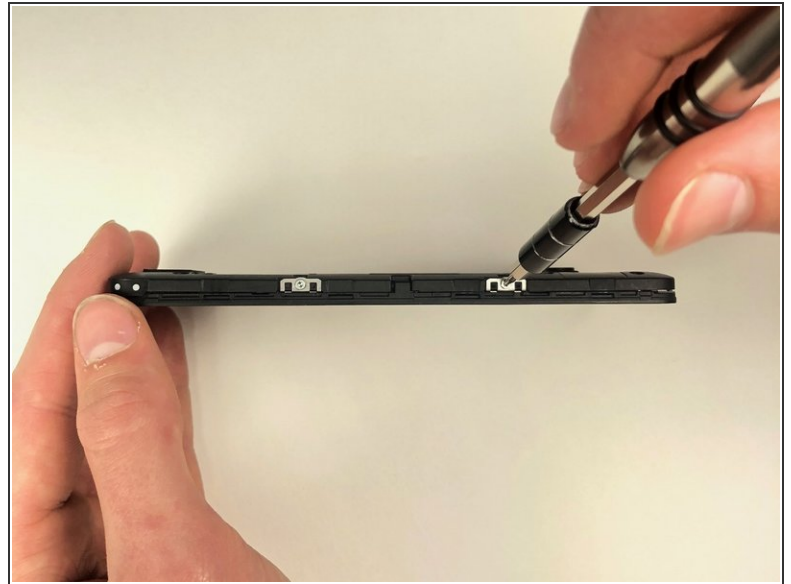
 Be careful when taking out the screws as they can strip easily.

Step 3



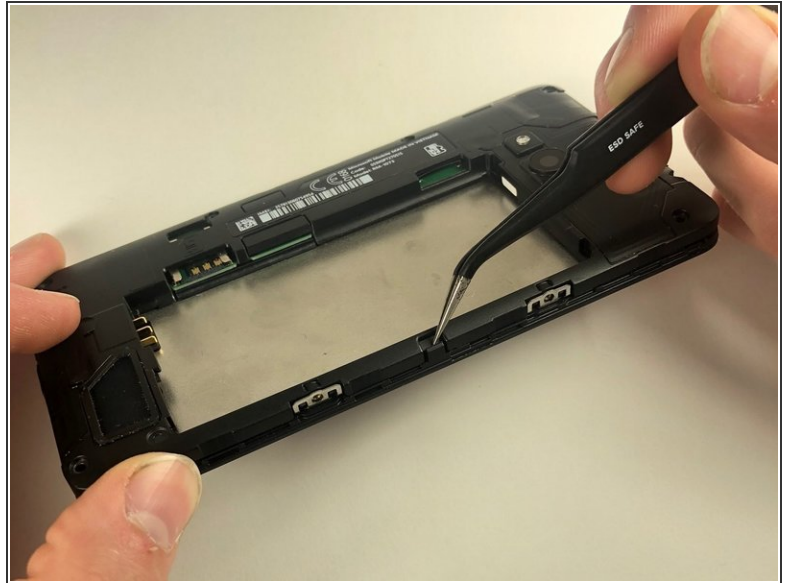
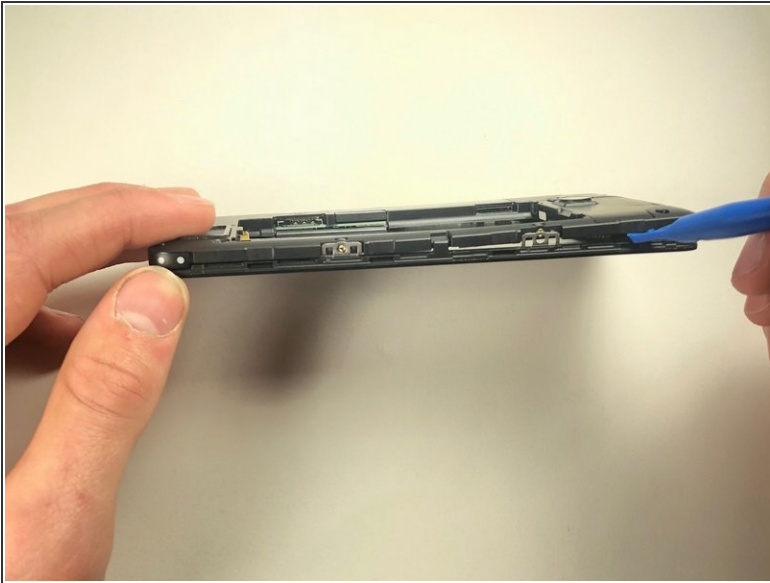
- Use the T-4 bit to unscrew the screws in the 4 corners, along with the two screws in the middle left side.

Step 4



- Using the T-4 bit, unscrew the two (2) screws.
- ⓘ Keep these screws separate from the screws from back of the phone to ensure that the right screws go where they belong.

Step 5



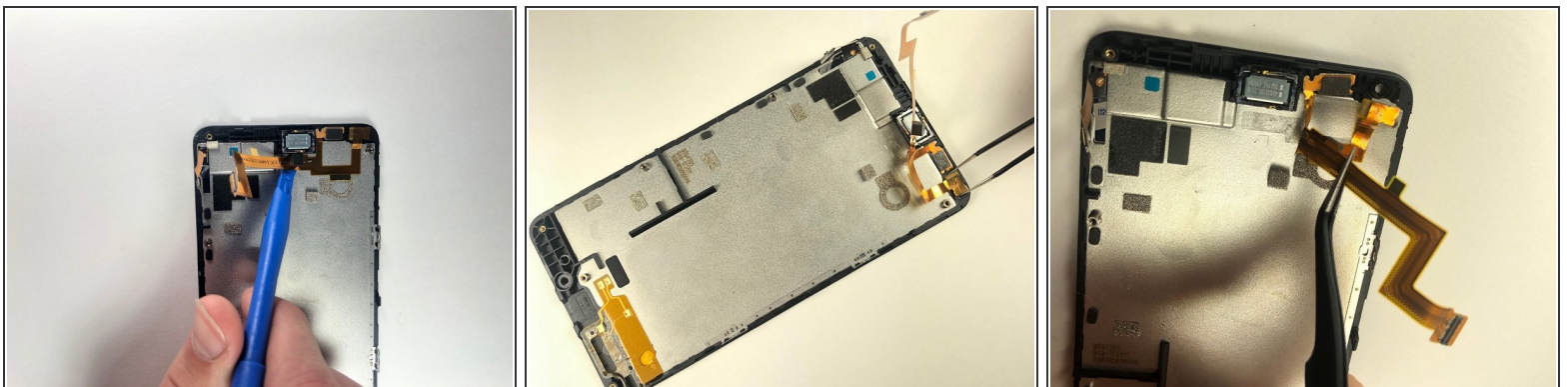
- Using the plastic opening tool to separate the screen from the back plastic casing
- Use the tweezers to release the clip on the side of device, and remove the back of the phone.

Step 6



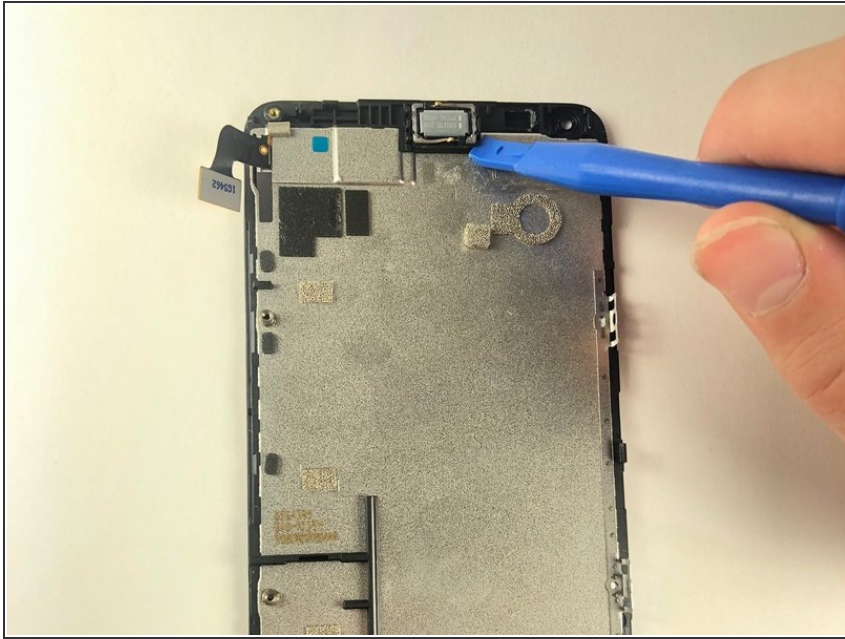
- Using the tweezers or a spudger, pull the gold tab up gently
- Using the tweezers or spudger, pull the white circuit up gently to completely detach the screen from the phone
- **For Motherboard replacement skip to step 11 after finishing this step**

Step 7



- Using the plastic opening tool, carefully get under the gold strip
- Using tweezers pull up the camera. The camera just sits in there
- using the tweezers pull up on the depth sensor. This is held in by a strong adhesive

Step 8



- Using the plastic opening tool, pry up the ear speaker. This is held in by strong adhesive.

To reassemble your device, follow these instructions in reverse order.