



# DOSS SoundBox Battery Replacement

This guide will show you how to remove and replace the battery in your DOSS SoundBox

Written By: Brendan Harkreader



 **TOOLS:**

- [Soldering Iron](#) (1)
  - [Magnetic Project Mat](#) (1)
  - [JIS Driver Set](#) (1)
-

## Step 1 — Battery



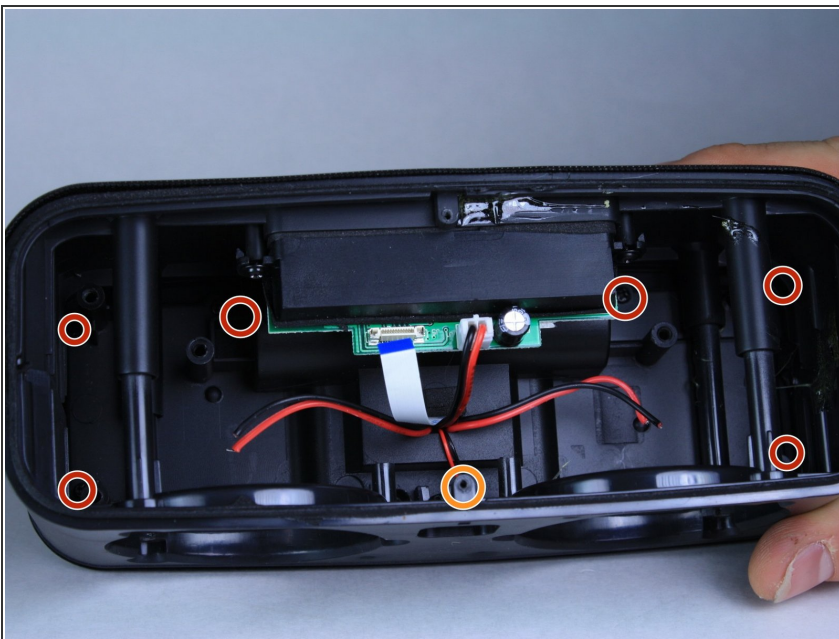
- Use a JIS #00 screwdriver to remove the four 3/32" screws that attach the base-plate to the speaker enclosure.
- ⓘ Use a magnetic mat to prevent the loss of screws.

## Step 2



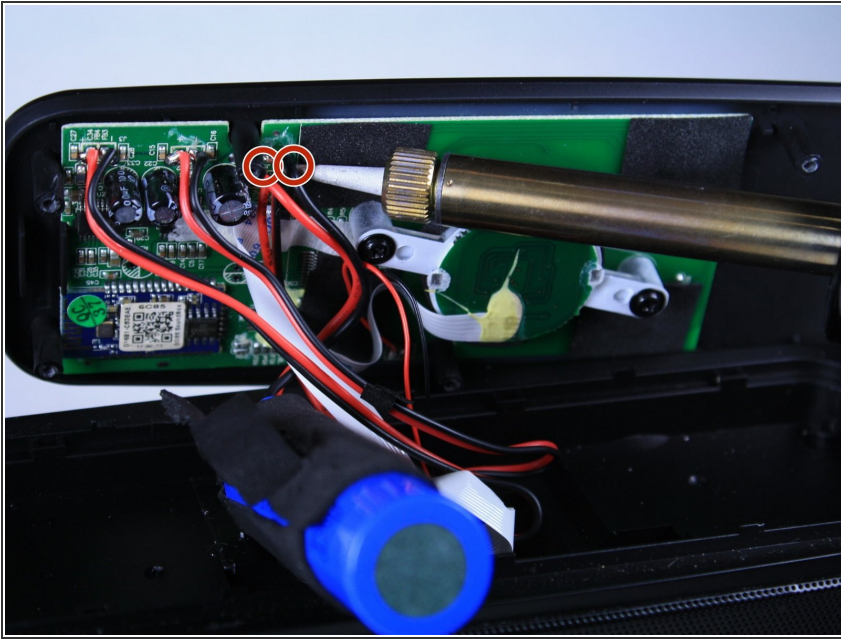
- Use a JIS #1 screwdriver to remove the six 3/32" screws marked with a red circle.
- Remove the two 1/16" screws marked with orange circles using a JIS #000 screwdriver.

## Step 3



- Remove the six 3/32" screws marked with red circles using a JIS #00 screwdriver.
- Remove the larger 3/32" screw indicated by an orange circle using a JIS #1 screwdriver.
- Once the screws are removed, gently lift the top (where the touch controls are) off of the speaker.

## Step 4



- De-solder the connections from the battery to the circuit board.
- ⓘ If you do not already have a replacement battery, you can purchase one [here](#).

To reassemble your device, follow these instructions in reverse order.