



iRobot Roomba 860 Bumper & Bumper Sensor Replacement

How to replace a iRobot Roomba 860 bumper and bumper sensor.

Written By: Danny Andrade



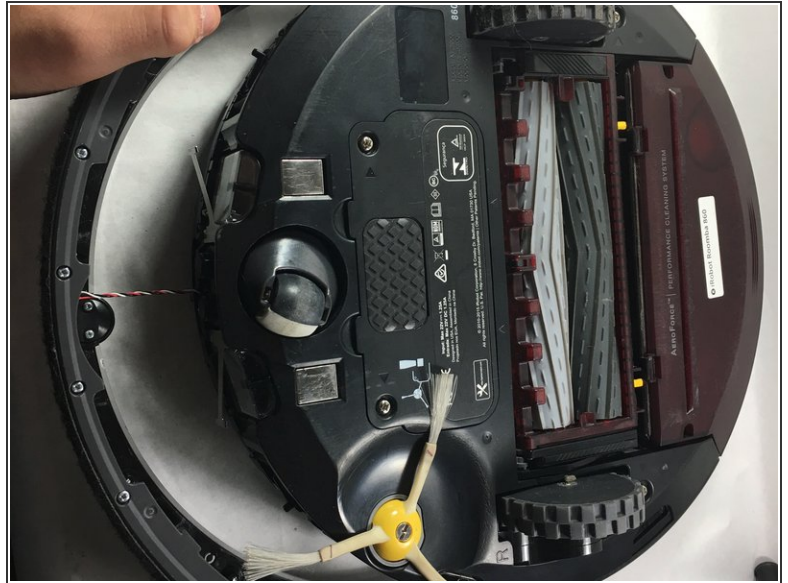
INTRODUCTION

This guide will show how to remove the Roomba front bumper and also the sensor attached by the red ribbon wire. You will need a Phillips Head #0 Screw driver for this repair. Make sure you work on a clean flat surface for this repair. Be sure to not misplace the small screws holding the sensor to the bumper.

TOOLS:

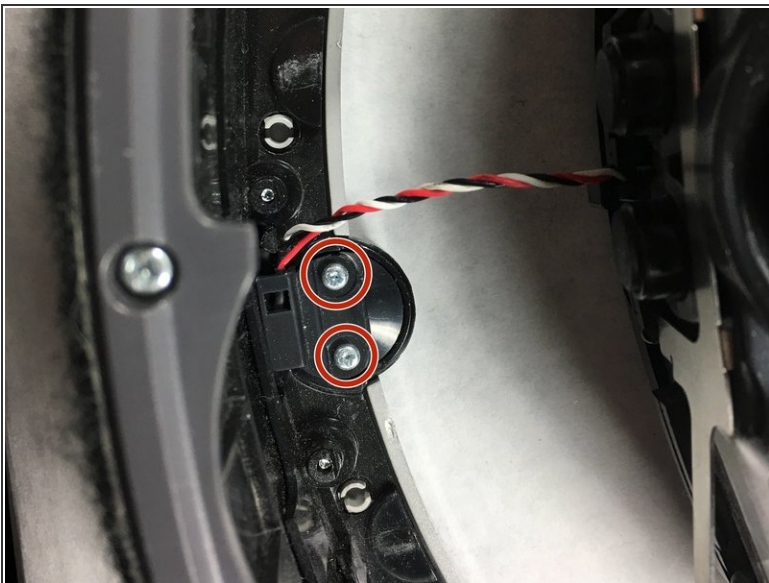
- [Phillips #0 Screwdriver](#) (1)
-

Step 1 — Bumper & Bumper Sensor



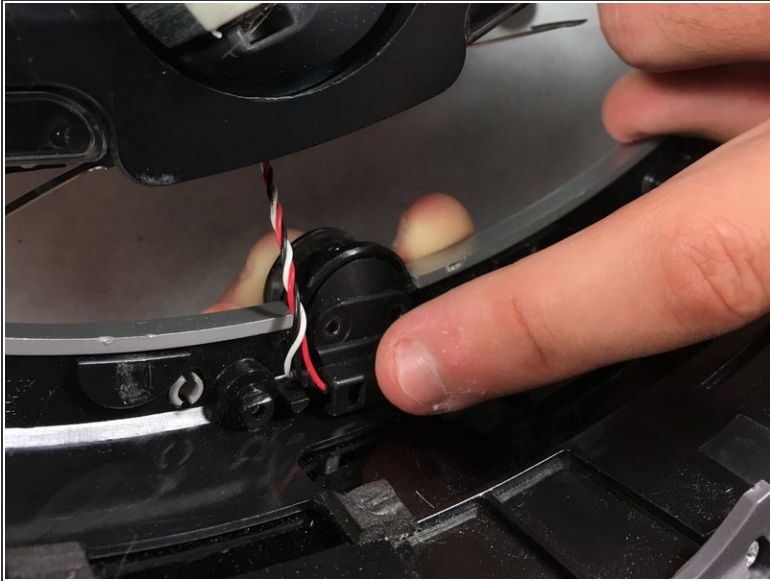
- Place Roomba flat on table with iRobot text upside down and closest to you.
- Detach the clips on the bumper.
- Flip Roomba so that the bottom side is facing up and you can access bottom screws on bumper.

Step 2



- Using a Phillips #0 screwdriver, remove the two screws.

Step 3



- Once the screws are removed, the wire will detach from the bumper and sensor with very light force.

To reassemble your device, follow these instructions in reverse order.