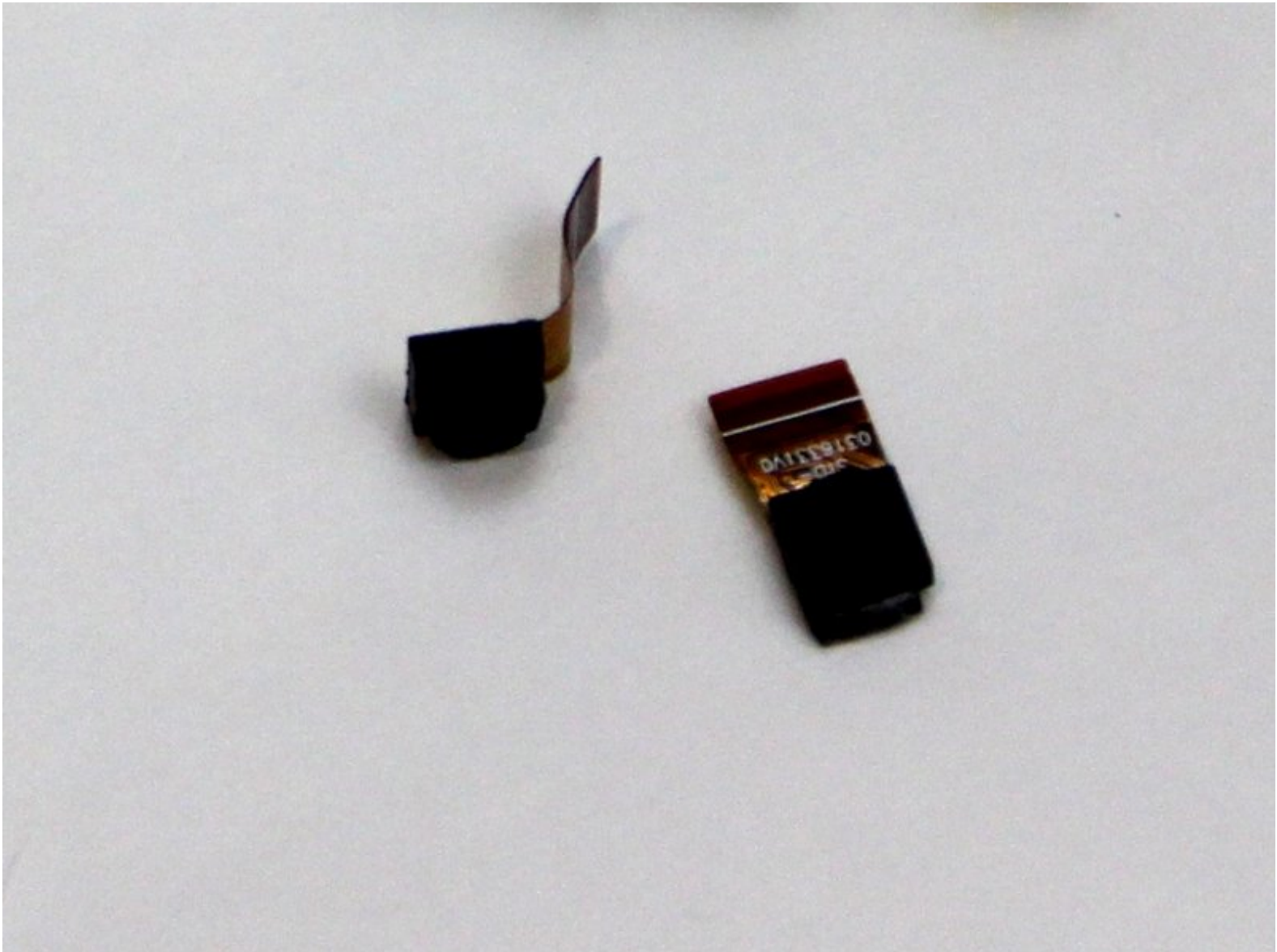




# VTech Kidizoom Smartwatch DX2 Camera Replacement

Use this guide to replace the camera on your VTech Kidizoom Smartwatch DX2.

Written By: Nathaniel Cady



---

## INTRODUCTION

If one of the cameras on your device is broken, cracked, or damaged in any way, the following guide will show you how to replace the camera.

---

### TOOLS:

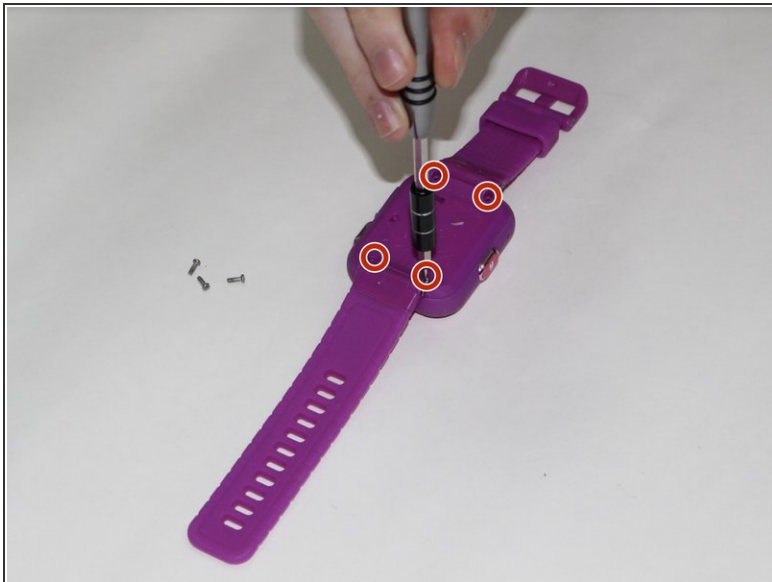
- [Phillips #00 Screwdriver](#) (1)
  - [Tweezers](#) (1)
-

## Step 1 — Master Switch



- Begin by flipping the watch over with its back facing upwards.

## Step 2



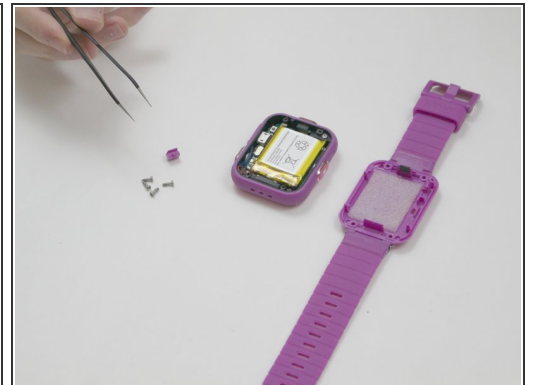
- Next, use the Phillips #00 screwdriver to unscrew the four 6.0 mm screws located in each corner of the watch to remove the backplate.

### Step 3



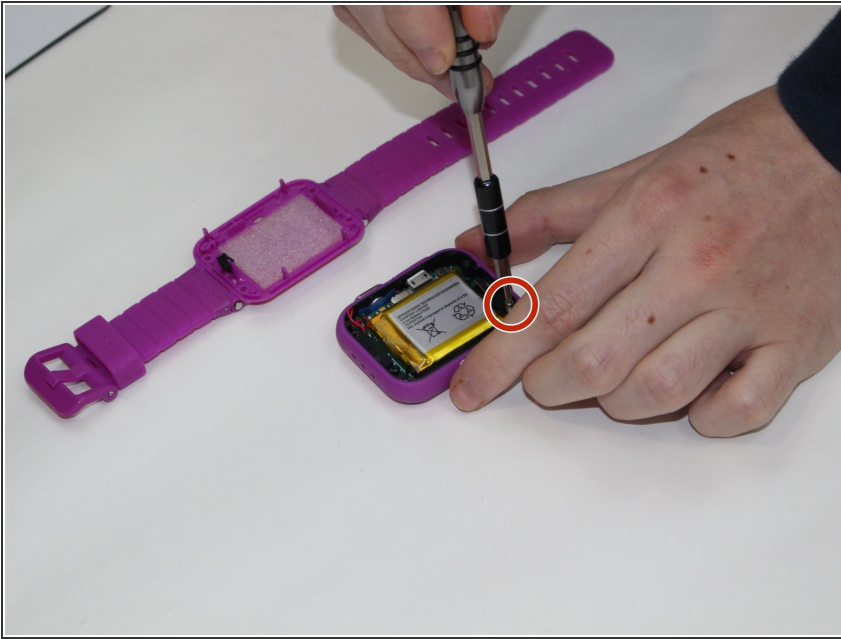
- Gently lift the backplate up to remove it.

### Step 4



- After removing the backplate, lift the master switch up from the circuit board.

## Step 5 — Motherboard



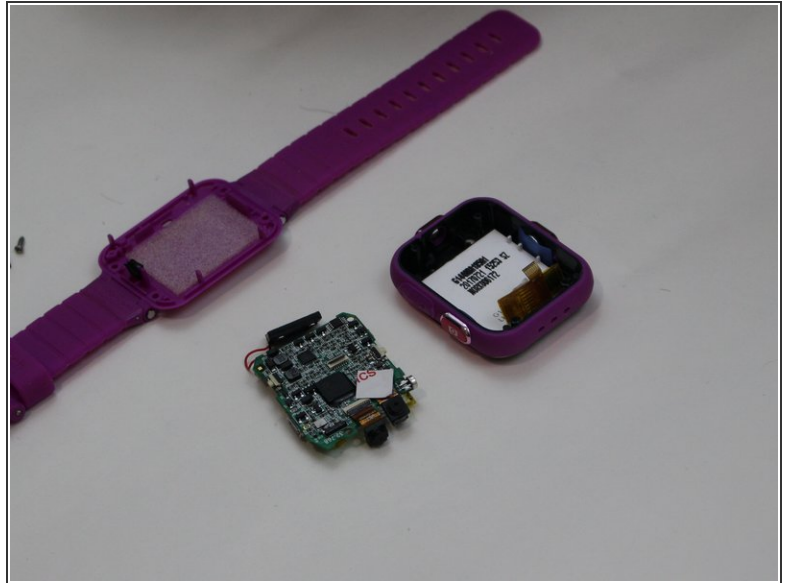
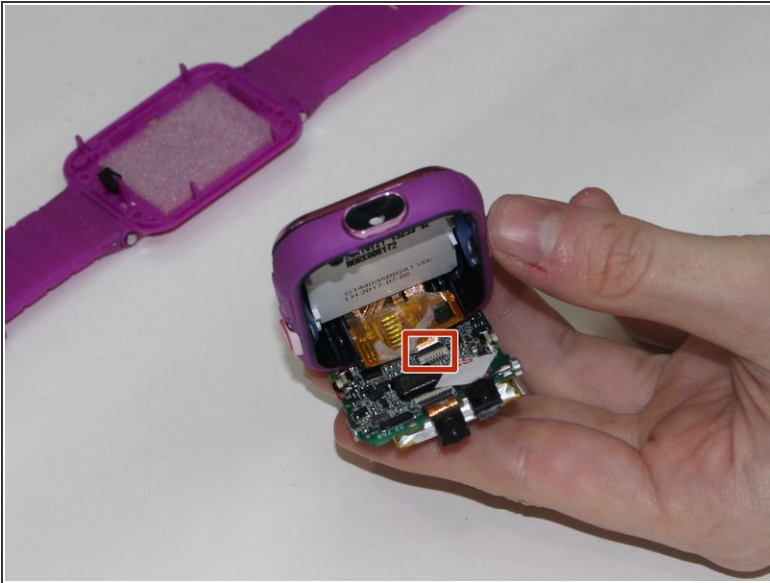
- Using a Phillips #00 screwdriver, remove the 0.6 mm screw.

## Step 6



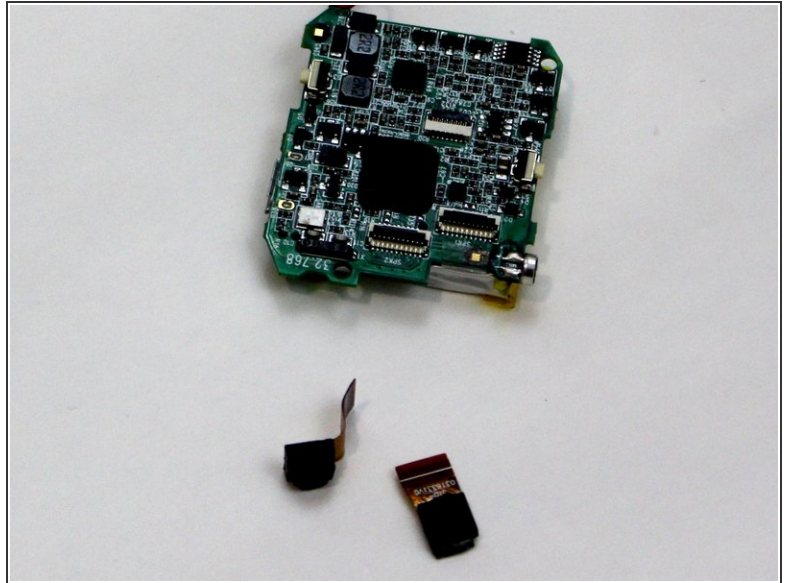
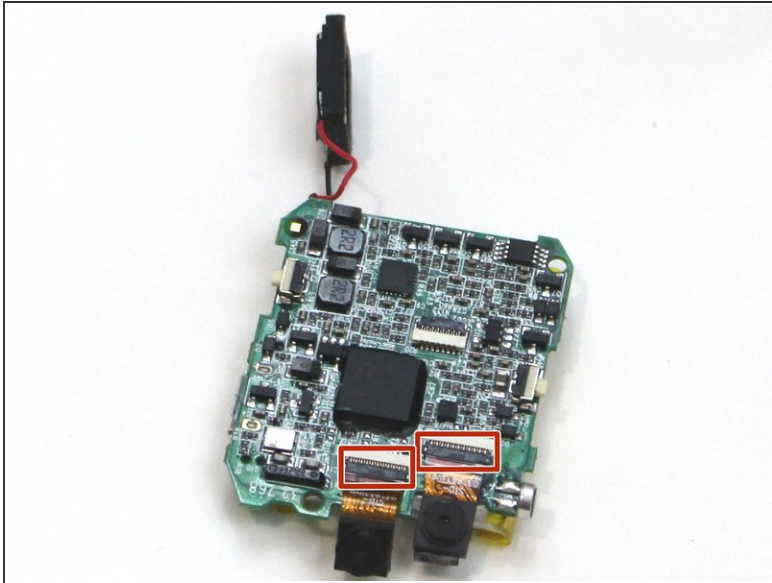
- Carefully remove the speaker from the case without disconnecting it from the motherboard.

## Step 7



- Using the tweezers, carefully lift the bar holding the connection to the screen.
- Remove the motherboard from the device.

## Step 8 — Camera



- Turn the motherboard so the battery is on the bottom and locate the two clips holding the cameras in place.
- Carefully lift the clips and slide the cameras out.

To reassemble your device, follow these instructions in reverse order.