



LG G Pad 7.0 Camera Replacement

A replacement guide for the rear facing camera of your LG G Pad 7.0.

Written By: Pratik Swayamsiddha Rath



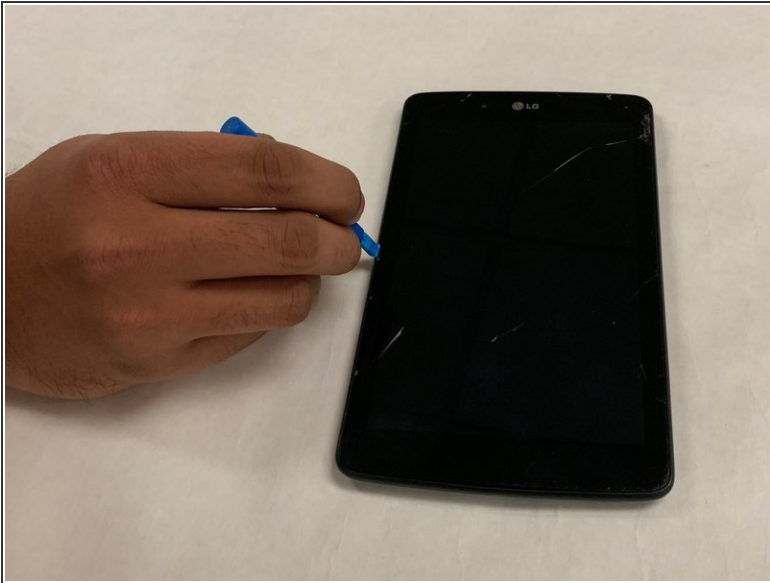
INTRODUCTION

Before starting, be sure that your tablet is turned off and that your work surface is clean. This is to avoid any unnecessary scratches since your screen will be facedown for the bulk of the replacement process.

TOOLS:

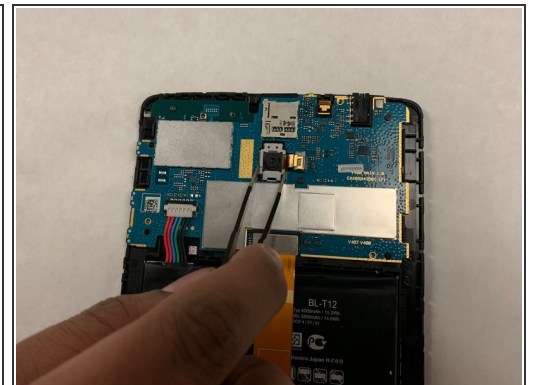
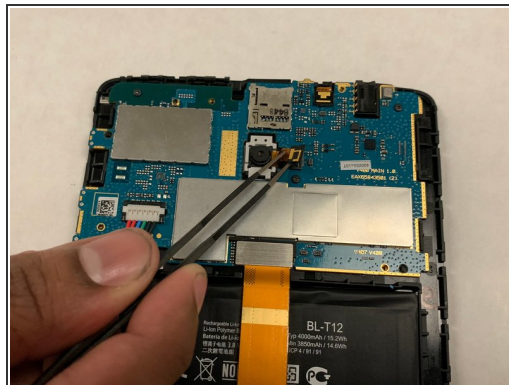
- [iFixit Opening Tools](#) (1)

Step 1 — Camera



- Remove the front panel by separating the glass screen from the plastic encasing using a non-marring pry tool.
- Avoid using excessive force around the USB charging port to avoid damaging it .

Step 2



- Gently disconnect the camera ribbon cable from the motherboard using a plastic pry tool.
- Remove the rear camera from the device.

To reassemble your device, follow these instructions in reverse order.