



Lenovo Thinkpad Edge E545 Optical Drive Replacement

This guide will walk you through the steps needed to replace the optical drive on your Lenovo Thinkpad Edge E545.

Written By: John Metzger



 **TOOLS:**

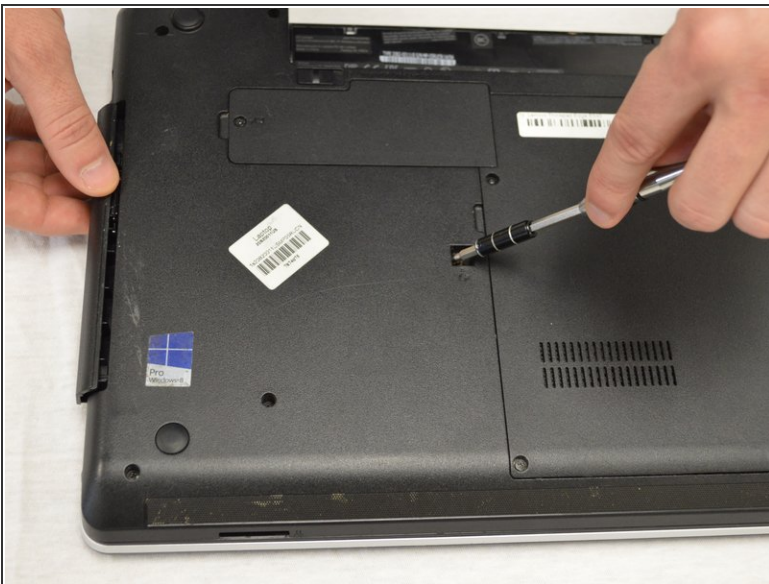
- [Phillips #000 Screwdriver](#) (1)
-

Step 1 — Optical Drive



- Using the Phillips #000 screwdriver, remove the screw that holds the optical drive in place. It is found in a square indent close to the center of the back panel of the computer.

Step 2



- Use the end of the screwdriver to assist in starting to slide the optical drive out.
- Put it into the hole where the screw was removed.
- Push towards the direction the optical drive slides out.
- Once it can be grabbed by hand, slide it out the rest of the way.

To reassemble your device, follow these instructions in reverse order.

This document was last generated on 2019-01-15 10:21:11 AM.