



How to Use iFixit Adhesive Remover

General instructions for safe and effective use of iFixit's proprietary blend of glue-busting solvent.

Written By: Jeff Suovanen



INTRODUCTION

You can remove glued-down components in all kinds of ways. One of the simplest is to use a solvent, such as iFixit Adhesive Remover, to dissolve the glue. Follow this guide for general tips and instructions for using adhesive remover on any device.



PARTS:

- [iFixit Adhesive Remover \(for Battery, Screen, and Glass Adhesive\)](#) (1)
-

Step 1 — How to Use iFixit Adhesive Remover



i First, prepare your device for surgery.

! Always disconnect the battery before you start.

- Cover or remove any components that may be vulnerable to damage, in case the solvent drips or leaks somewhere it shouldn't. (A sheet of aluminum foil offers good protection.)

i Vulnerable components include display coatings and plastic parts such as speaker housings and keyboard keys.


- If necessary, direct the flow of solvent away from sensitive components by elevating one side of your device.

★ If contact with sensitive components can't be avoided, use a milder solvent such as 99% isopropyl alcohol. It will take longer and require more care, but alcohol alone won't damage most electronic components.

Step 2

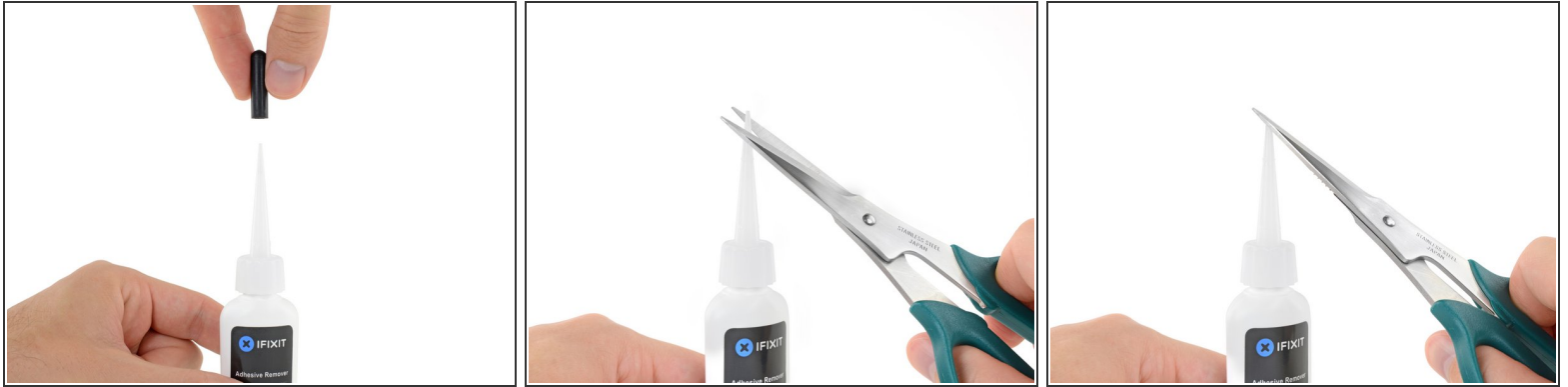


- Now that your device is prepped, it's time to prep yourself.


 iFixit adhesive remover contains acetone, a mild skin and eye irritant.


- Wear eye protection when handling and applying the adhesive remover. (Eye protection is included in your kit.)
- **Do not** wear contact lenses without eye protection.
- Protective gloves are also included in your kit. If you are concerned about possible skin irritation, put your gloves on now.

Step 3





- Pull off the black rubber stopper from your bottle of adhesive remover.

 Twist to loosen or remove the bottle cap before you cut the applicator tip.

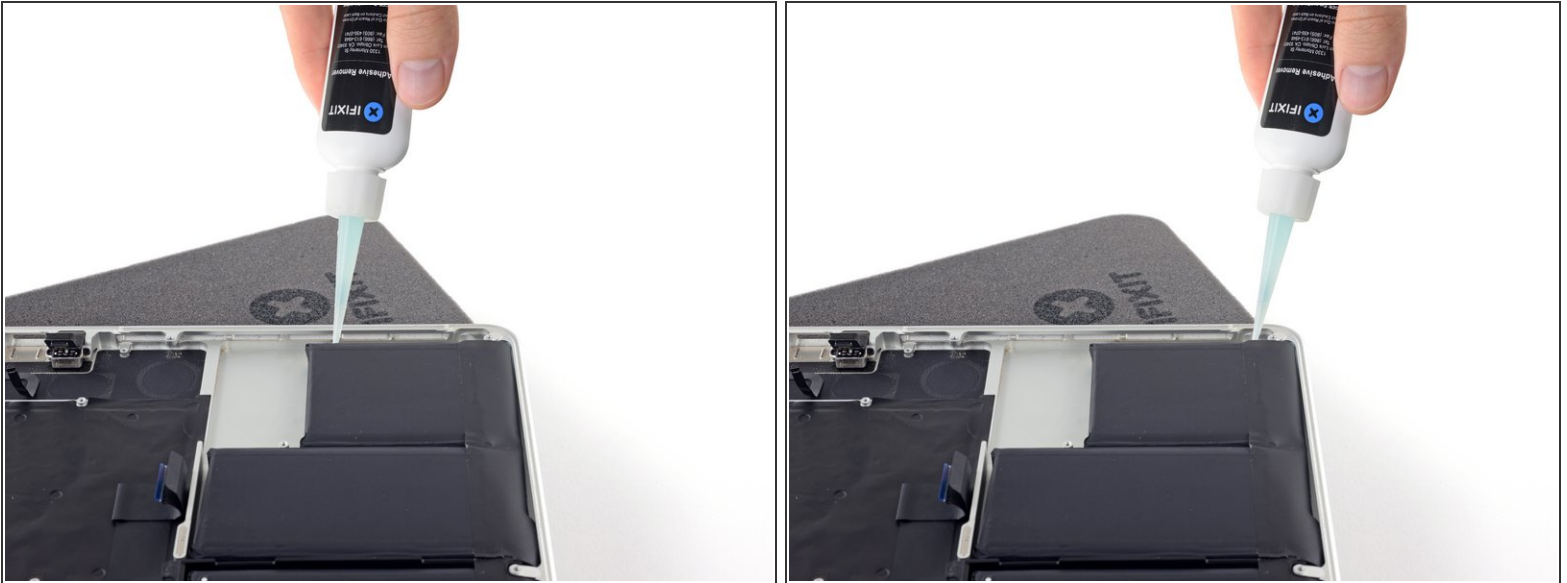
 This unseals the bottle and allows the pressure to equalize before you cut the applicator tip. **If you skip this step, the adhesive remover may spray out unexpectedly when the tip is cut.**

- Use scissors to cut off the sealed tip of the applicator.

 Cutting close to the narrow tip will give you better control so you can apply the adhesive remover in small amounts.

 Twist and close the bottle cap securely before you proceed further.

Step 4



- Apply a few drops of adhesive remover evenly along the elevated edge of your glued-down component.
- ⓘ A little bit goes a long way, so start with a very small amount. You can always add more later if needed. Applying the solvent in small amounts helps prevent unwanted leaks.
- ⓘ Wait 2-3 minutes for the liquid adhesive remover to penetrate and soften the adhesive before you proceed to the next step.

Step 5



- Gently slide a plastic card or other thin pry tool under the adhered component.
 - ⓘ It may help to gently wiggle or twist the card as you go. If you're separating a battery, be careful not to deform or puncture it.
- If you're struggling, apply a few more drops of adhesive remover and wait about a minute before trying again.
- If your device has an especially tight fit and you have trouble inserting a tool, try working a piece of floss or wire underneath the component, and pull it side-to-side in a sawing motion to separate the adhesive.
- Lift and separate your newly-unglued component.

Step 6



- Before installing or gluing down any new components, remove any remaining adhesive residue from your device.
 - Peel off larger pieces of adhesive using tweezers or gloved fingers.
 - Scrape away any remaining adhesive with a plastic tool, and clean the underlying areas with adhesive remover or isopropyl alcohol. Wipe in one direction, not back and forth, until all the adhesive residue is gone.
- ⓘ This can take quite a bit of work, so be patient.
- When your device is clean and dry, go ahead and install your new part and reassemble your device.

Nice work! If you have any leftover adhesive remover, you can save it for your next project.

Take your e-waste to an [R2 or e-Stewards certified recycler](#).

Repair didn't go as planned? Check out our [Answers community](#) for troubleshooting help.