



ExoPC Slate Camera Replacement

How to replace an ExoPC Slate camera.

Written By: Aaron Moore



INTRODUCTION

Replacing the camera on the ExoPC Slate is simple; however, be sure to remove components gently and keep track of them.

TOOLS:

- [Phillips #00 Screwdriver](#) (1)
 - [Tweezers](#) (1)
 - [Phillips #000 Screwdriver](#) (1)
-

Step 1 — Camera



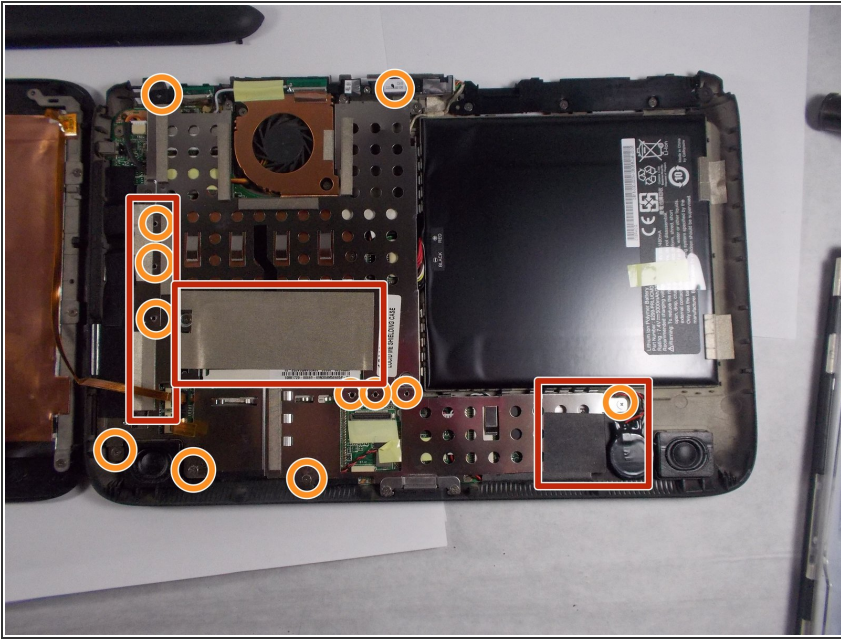
- Turn the PC on its back with the screen facing down and pull on the piece of plastic shown in the image. Use your fingernails to prod into the depression where the two plastic covers meet.

Step 2



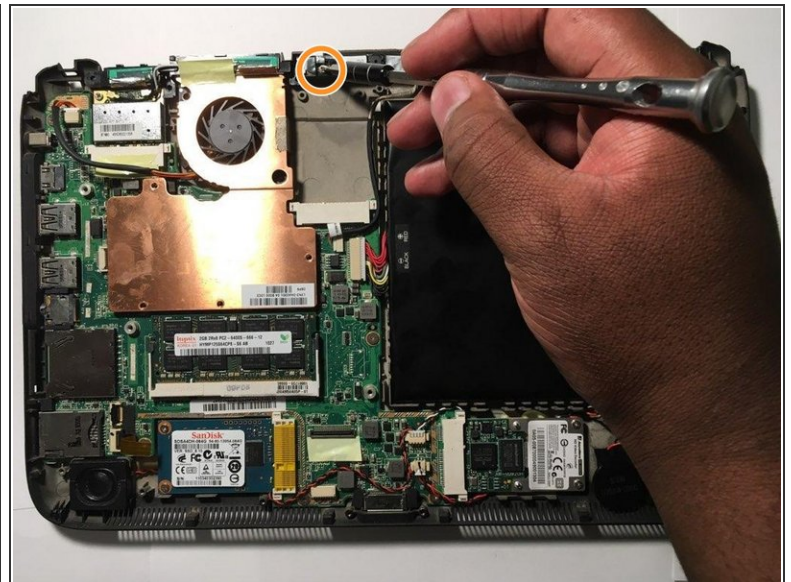
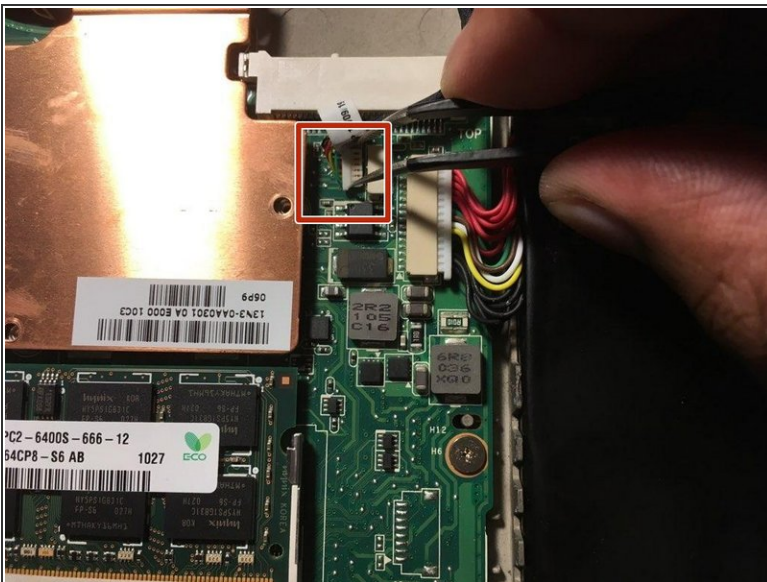
- Using the 00 Phillips screwdriver remove the two screws in the corners.
 - Using your left hand pull at the exposed section of the PC while simultaneously pushing the right with the thumb of your other hand. This will release the plastic clips allowing back cover to slide off, as shown from the picture
- ⚠ When removing the back cover make sure that the ribbon connectors going to the screen are not damaged. Carefully fold over the cover like a book.

Step 3



- Remove the tape covering the metal shield.
- Remove the 12 screws using the Phillips #00 screwdriver.
- Dislodge the shield by pulling the prongs away from underneath the battery. The shield should come completely off.

Step 4



- Use tweezers to disconnect camera cable from motherboard.
- Remove the Phillips #000 screw that holds the camera in place.
- Gently remove the camera.

To reassemble your device, follow these instructions in reverse order.

This document was last generated on 2019-01-03 11:47:01 AM.