



# WowWee CHiP Robot Dog Ball Battery Replacement

How to replace WowWee CHiP Robot dog ball battery.

Written By: Joseph Dantes



 **TOOLS:**

- [Phillips #0 Screwdriver](#) (1)
-

## Step 1 — Ball Battery



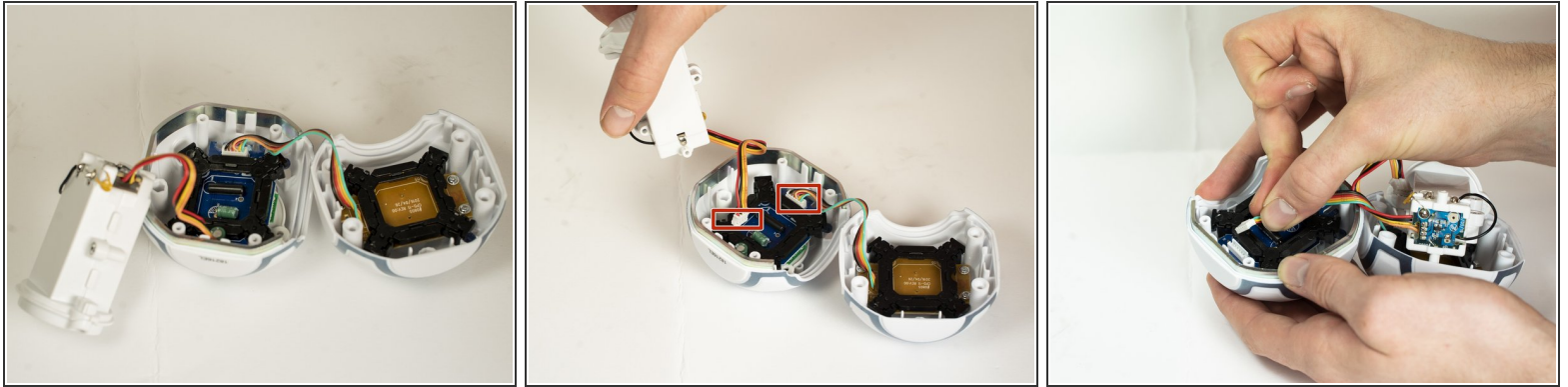
- Turn the ball so the side with the on/off switch is facing you.

## Step 2



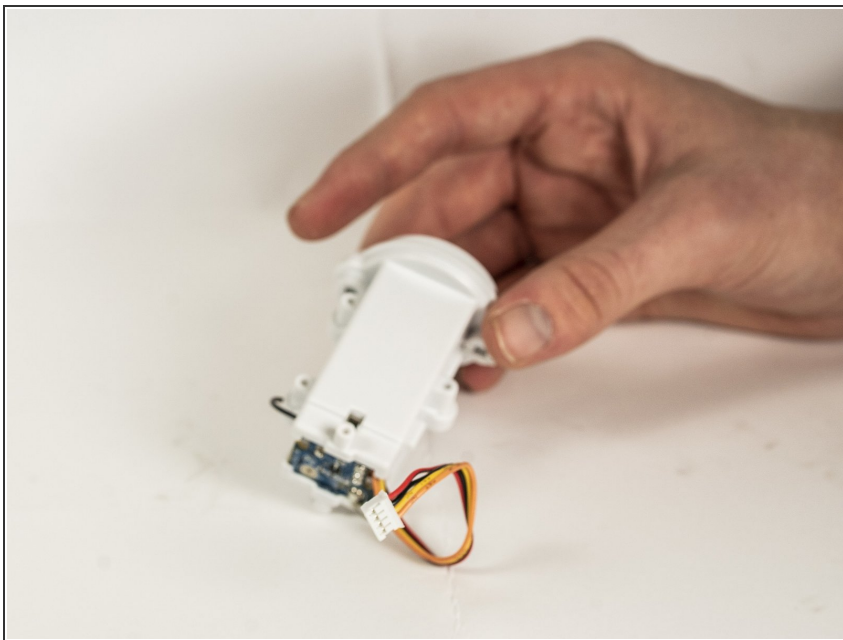
- Unscrew the four Phillips #0 screws each located near a corresponding light, and open up the ball.

### Step 3



- Unplug wire connectors from the circuit.

### Step 4



- Move battery connector away from the rest of the ball.

To reassemble your device, follow these instructions in reverse order.

This document was last generated on 2019-07-19 09:32:02 AM.