



WowWee CHiP Robot Dog Wheel Replacement

How to remove and replace CHiP's wheels.

Written By: Joseph Dantes

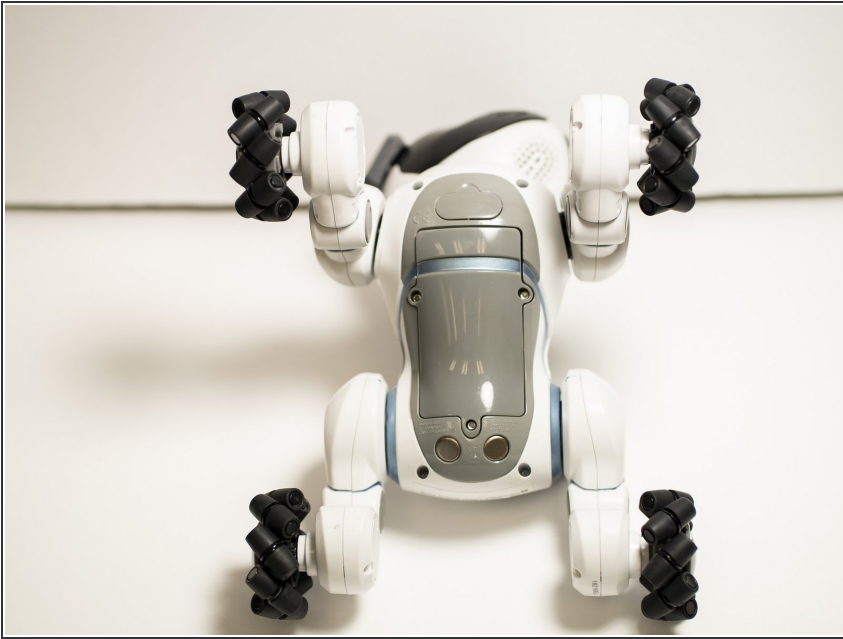




TOOLS:

- [Mako Driver Kit](#) (1)
-

Step 1 — Battery



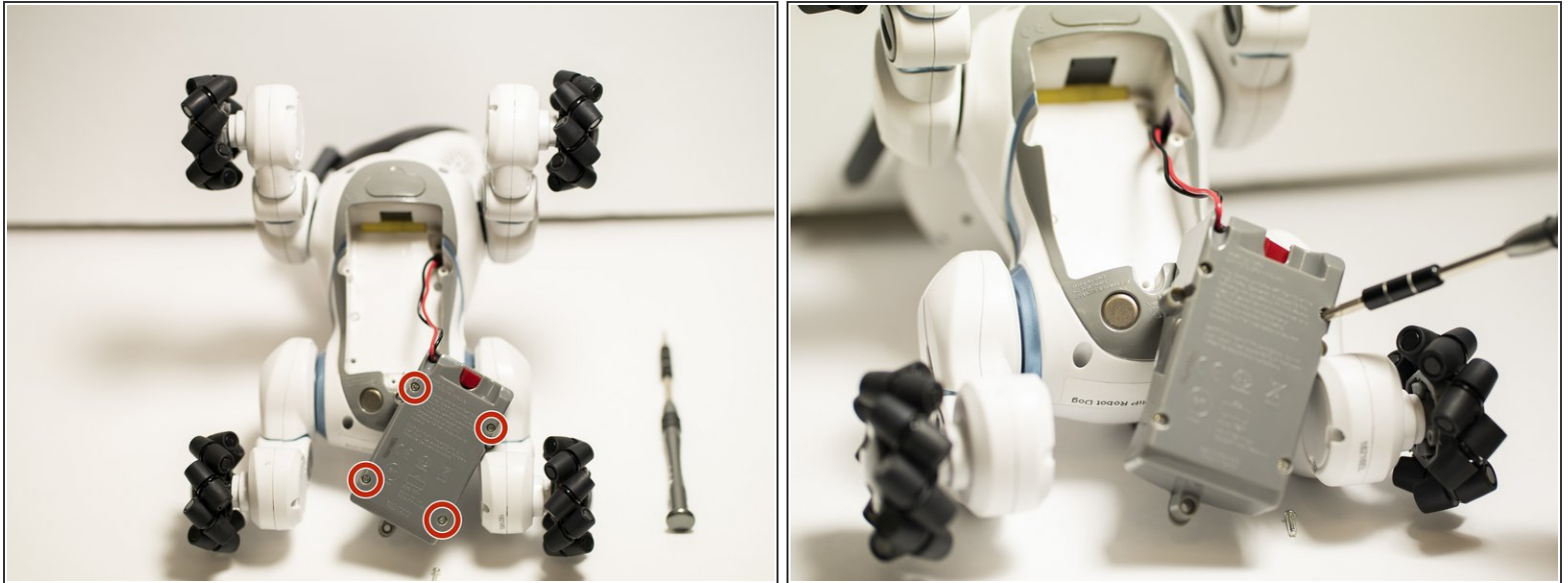
- Place CHiP on its back so that its stomach is facing you.

Step 2



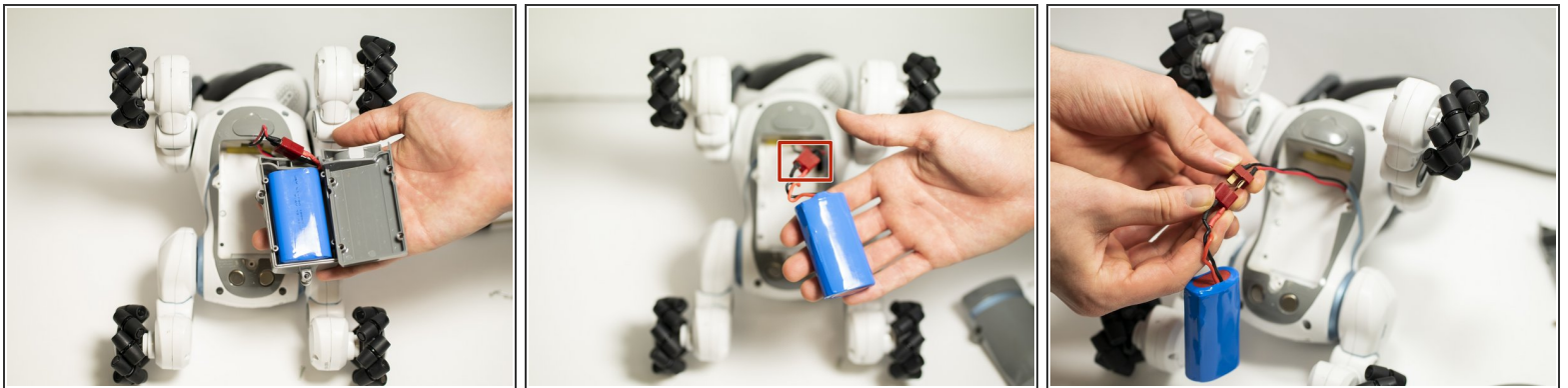
- There are three small hex screws connecting the battery to CHiP. Remove all screws with a hex screwdriver and remove battery casing.

Step 3



- Once the top face of the battery is off, you will see a small rectangular box that the batteries are inside. There are 4 Phillips head screws in the box. Remove all screws with a Phillips head screwdriver.

Step 4



- Once the battery is removed from body, the battery should be connected by a red and black wire. There is a red rectangular connector that easily pulls apart. Pull apart the red rectangular connector.

Step 5 — Wheel



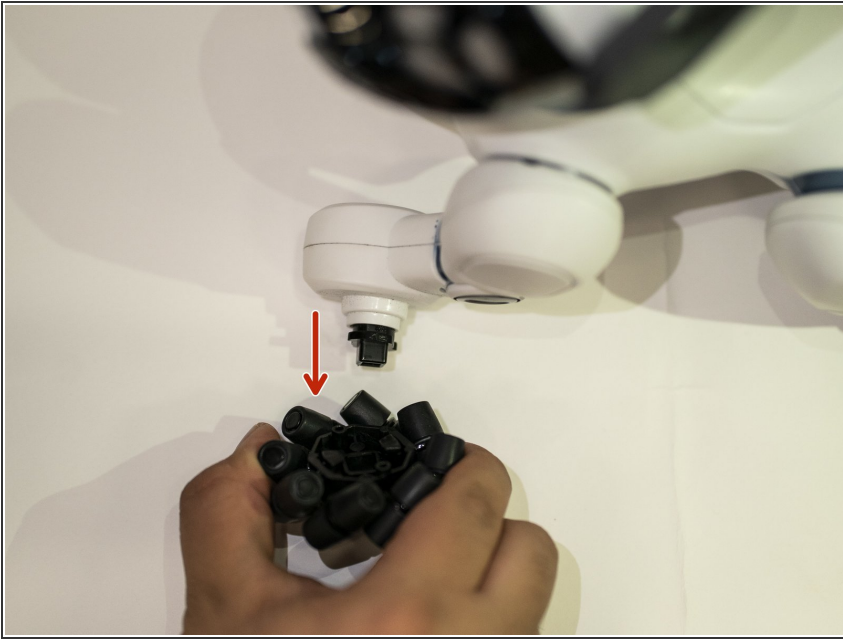
- Locate wheel to replace.

Step 6



- Twist grey wheel cap in counter-clockwise rotation.

Step 7



- Pull and remove wheel.

To reassemble your device, follow these instructions in reverse order.

This document was last generated on 2019-07-22 11:53:35 PM.