



# Kindle 4 Battery Replacement

Replacement of the internal battery

Written By: Sigi Gruber



**TOOLS:**

- [New Item](#) (1)
- [New Item](#) (2)
- [New Item](#) (2)
- [Tweezers](#) (1)
- [New Item](#) (1)
- [New Item](#) (1)
- [New Item](#) (1)

**PARTS:**

- [New Item](#) (1)

## Step 1 — Opening the case



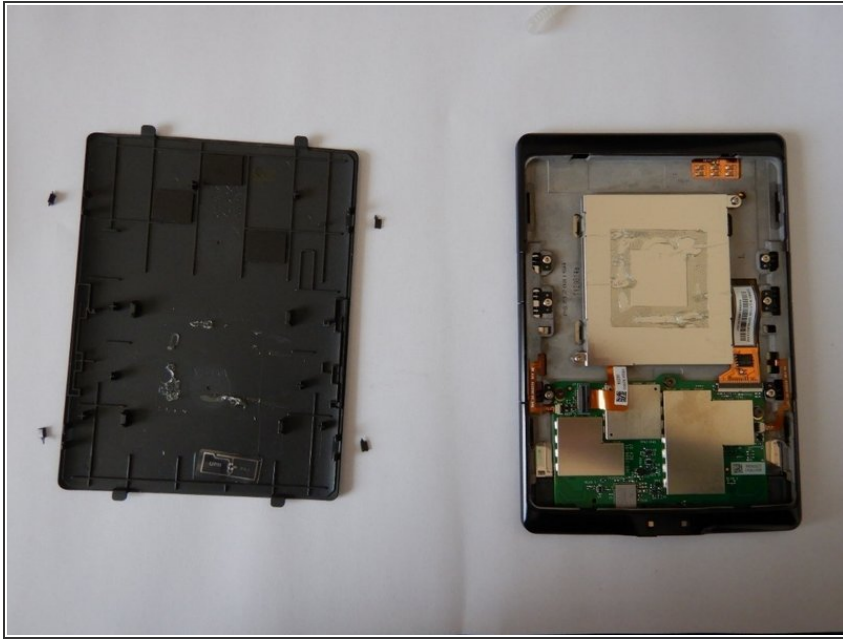
- Use plastic opening tools to pry open the case starting on the long side. The cover has a total of 8 clips, 4 of which (located on the long sides) are designed so they will be destroyed when the device is opened.

## Step 2 — Loosening the adhesive



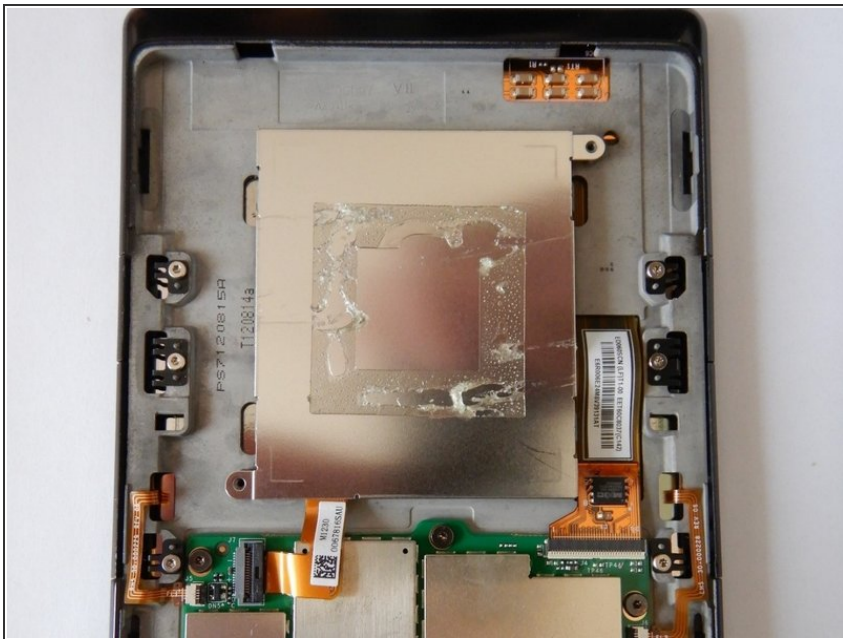
- After prying open 3 sides of the cover, it is still attached to the aluminium cover by double-sided adhesive tape. Use a screwdriver to create a small gap and use the scalpel to cut the adhesive. Alternatively you can loosen the adhesive with a heat gun.

### Step 3 — Remove the case cover



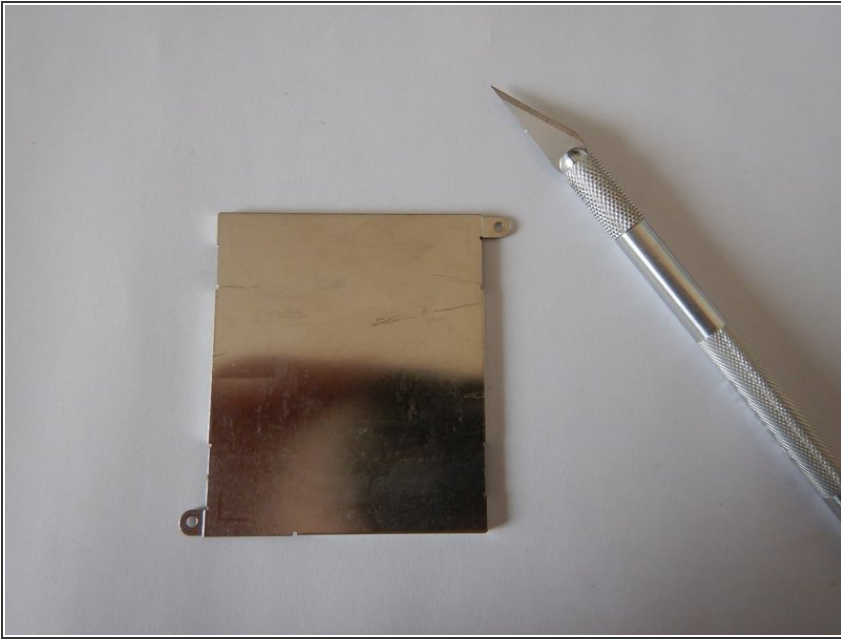
- After loosening the adhesive, the case cover can be easily removed.

### Step 4 — Remove the battery cover



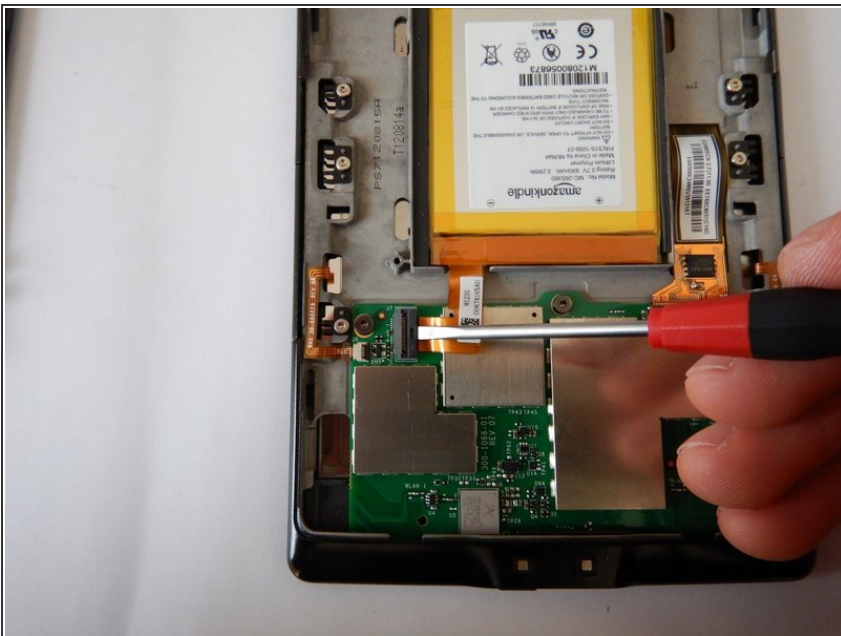
- Remove the two screws of the battery cover with a TX5 screwdriver.

## Step 5 — Remove any adhesive residue



- Remove any adhesive residue from the battery cover and the housing cover with a scalpel / rubbing alcohol.

## Step 6 — Disconnect the battery



- Then carefully disconnect the flex cable of the battery, making sure that the contacts are not being short-circuited.

## Step 7 — Remove the battery



- The battery is glued to the housing, it takes some force to remove it. Be very careful not to puncture the battery as it might catch fire and/or explode! Dispose of the old battery professionally.

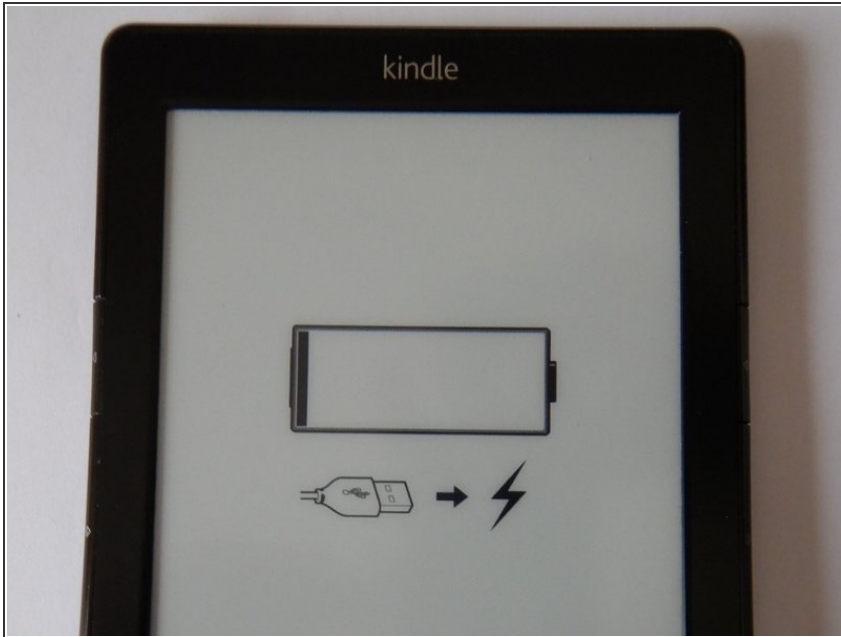
## Step 8 — Insert new battery



- The new battery can be fixed immediately by the remaining adhesive residue. Reconnect the

flex cable of the new battery, making sure that the contacts are not short-circuited.

## Step 9 — Control function



- The display now shows the indication of an empty battery.
- Before further assembly, the battery should be fully charged and checked here if the device interrupts the charge of a fully charged battery. If this is not the case, the new battery could be destroyed by the device.
- In any case, supervise this initial charging process and carry it out in a place where there are no flammable objects.

## Step 10 — Secure the battery cover



- Secure the battery cover with the two TX 5 screws. Ensure a good fit of the housing cover with a few strips of double-sided tape as shown in the picture. However, do not use too much which would hinder another future disassembly.

## Step 11 — Finish the reassembly



- The case cover can be put back despite the four missing fixations and should be quite quite firmly seated.