



# Nokia Lumia 2520 Display Assembly Replacement

This guide will show you how to replace the Nokia Lumia 2520 display assembly.

Written By: Daniel Chevalier



---

## INTRODUCTION

The Nokia Lumia 2520 has a display size of 10 inches. with a resolution of 1920 pixels by 1080 pixels at a PPI of 218 pixels per inch.

---

### TOOLS:

- [iFixit Pro Tech Toolkit](#) (1)
  - [Heat Pad](#) (1)
  - [iFixit Opening Picks set of 6](#) (1)
-

## Step 1 — Display Assembly

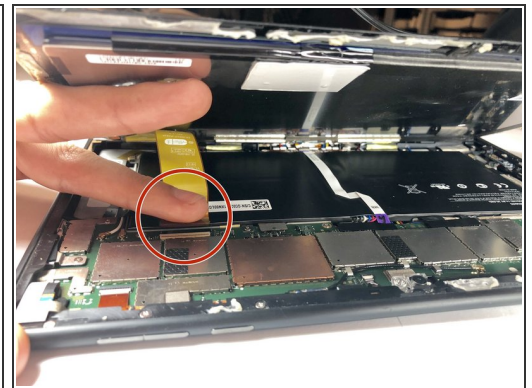


- Apply heat pad to each side of the device.

**⚠** When using any heat pad please use some form of padded gloves so you don't burn your fingers.

**i** Microwave the pad for 30 seconds so an ample amount of heat is given on all four sides. Do not microwave more than once every two minutes.

## Step 2



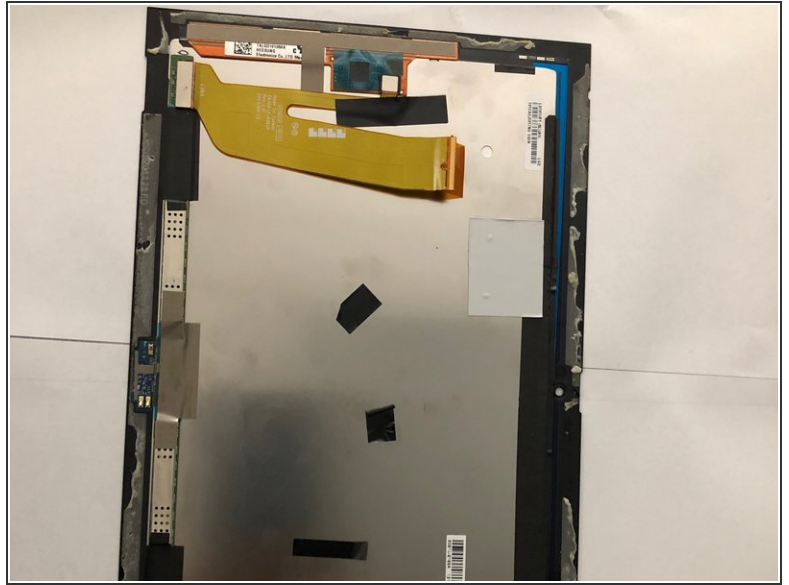
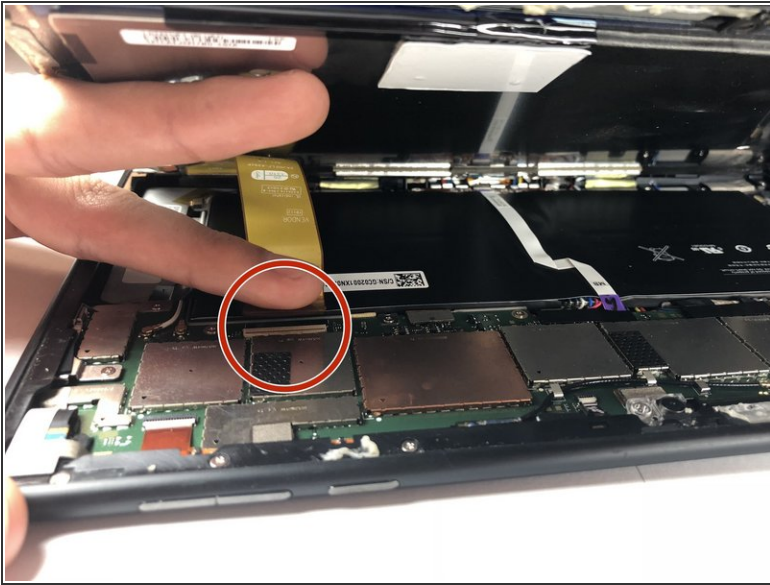
- Insert the pick between the glass to separate the glass from the device. You can also use the suction cups to help lift the glass.

**⚠** When pulling the screen off the chassis be careful not to cut the ribbon cable that connects the screen to the logic board.

**⚠** Take your time to pry open the screen from the chassis. In this process you can easily break the screen or crack it.

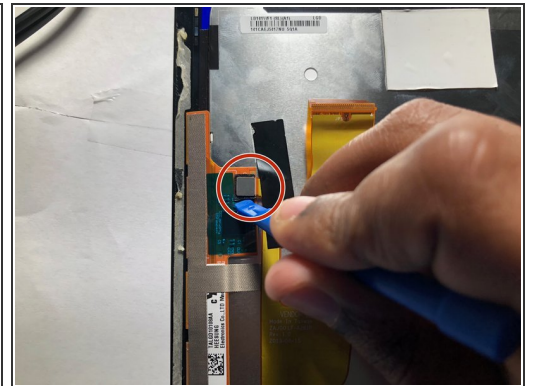
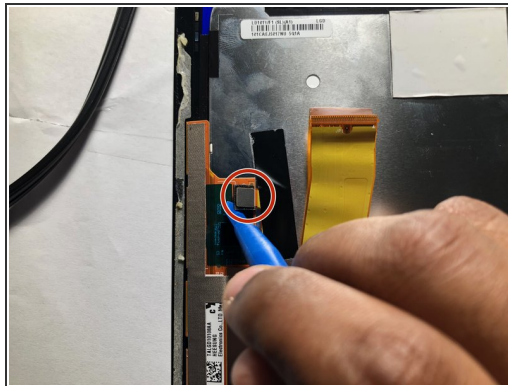
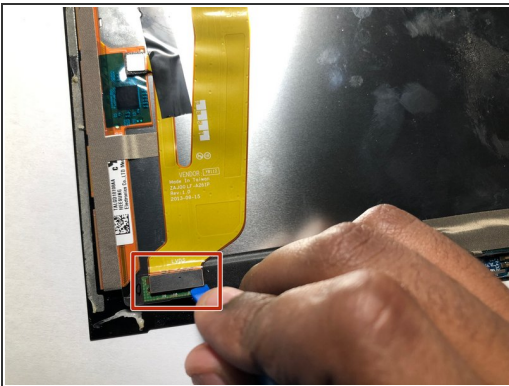


### Step 3



- Pull out the ribbon cable from its connection
- Once that done move on to remove the ribbon connection from the screen.

### Step 4



- Use the plastic pry tool to remove one of the connection.

## Step 5



- Once down everything is completed.

To reassemble your device, follow these instructions in reverse order.

This document was last generated on 2019-07-21 12:44:41 PM.