



# Sony Alpha a7s II Tripod Mount Replacement

How to replace a Sony Alpha a7s II tripod mount.

Written By: Brittany Pourciau



---

## INTRODUCTION

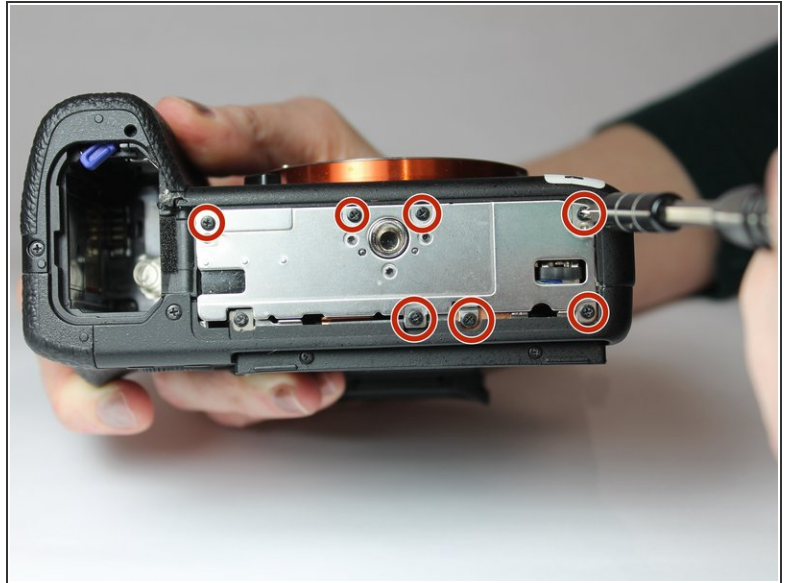
This guide requires you to take out at least 10 screws. Be extremely careful with where you place them so that you can replace the mount without leaving out the required screws.

---

### TOOLS:

- [J00 JIS Screwdriver](#) (1)
  - [Tweezers](#) (1)
-

## Step 1 — Tripod Mount



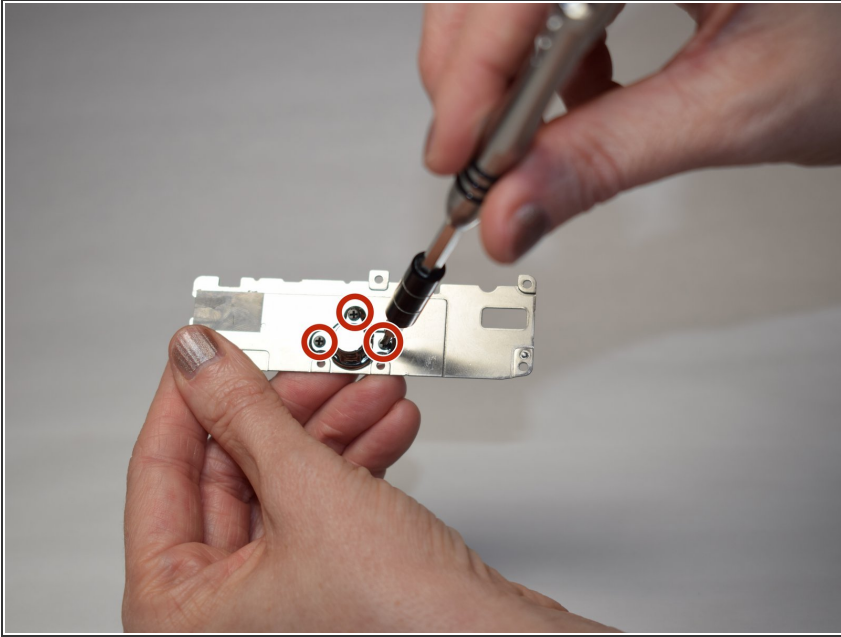
- Orient your camera so that you are looking at the bottom portion.
  - Using a JIS #00 screwdriver, remove the 7 screws that are securing the metal plate to the bottom of your camera.
- i** You do not need to remove that recessed screw that is not connected to the bottom metal plate.

## Step 2



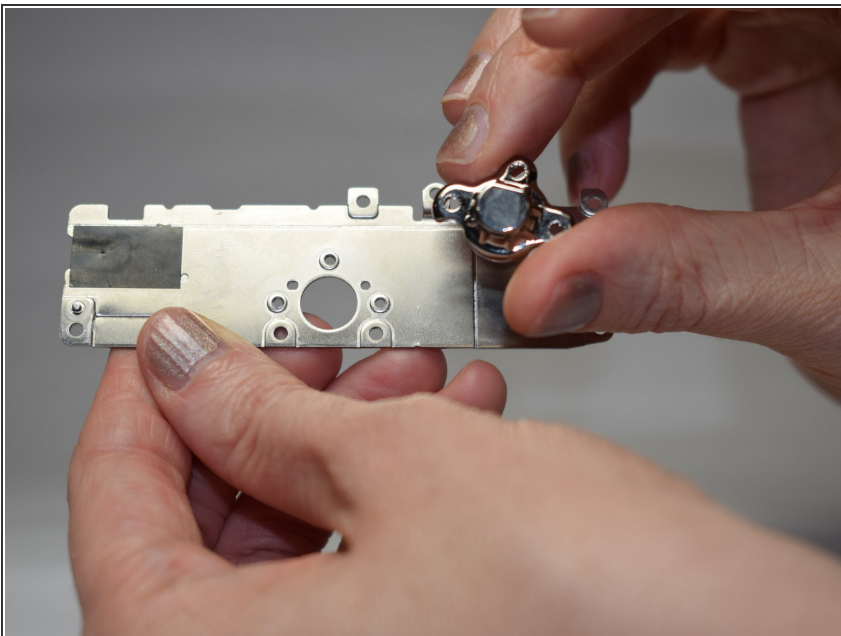
- Remove metal plate. Sometimes this plate can become stuck and hard to remove. Use tweezers to separate the plate from the bottom of the camera.

### Step 3



- Flip the plate to the opposite side exposing the aspect that was just inside of the camera.
- Use the JIS #00 screwdriver to unscrew the the 3 screws surrounding the tripod mount.

### Step 4



- Remove the tripod mount from the metal plate.

To reassemble your device, follow these instructions in reverse order.