



Sony Alpha a7s II LCD Replacement

How to replace a Sony Alpha a7s II LCD screen.

Written By: Jabari Montsho



INTRODUCTION

The LCD screen can be pulled out to a couple of different angles. However, be careful when angling it because it does have restrictions. Doing so past those restrictions will break the LCD bracket holding it in place.

TOOLS:

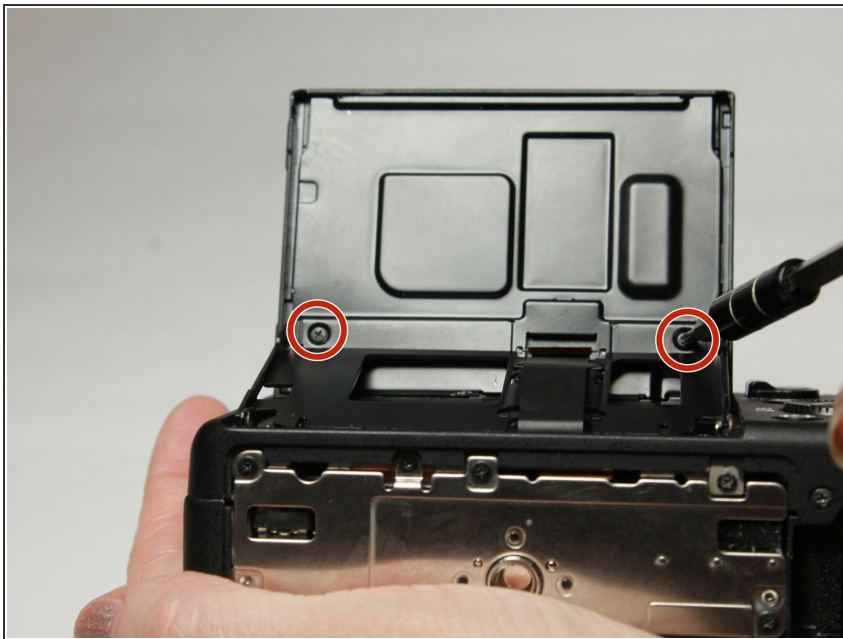
- [JIS #00 Screwdriver](#) (1)

Step 1 — LCD



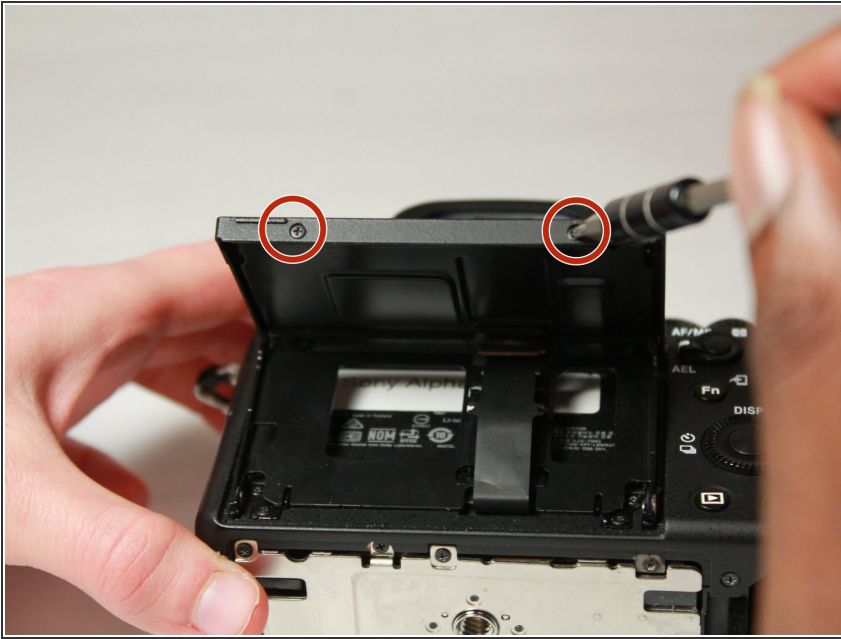
- Orient the camera so that the LCD screen is facing you.

Step 2



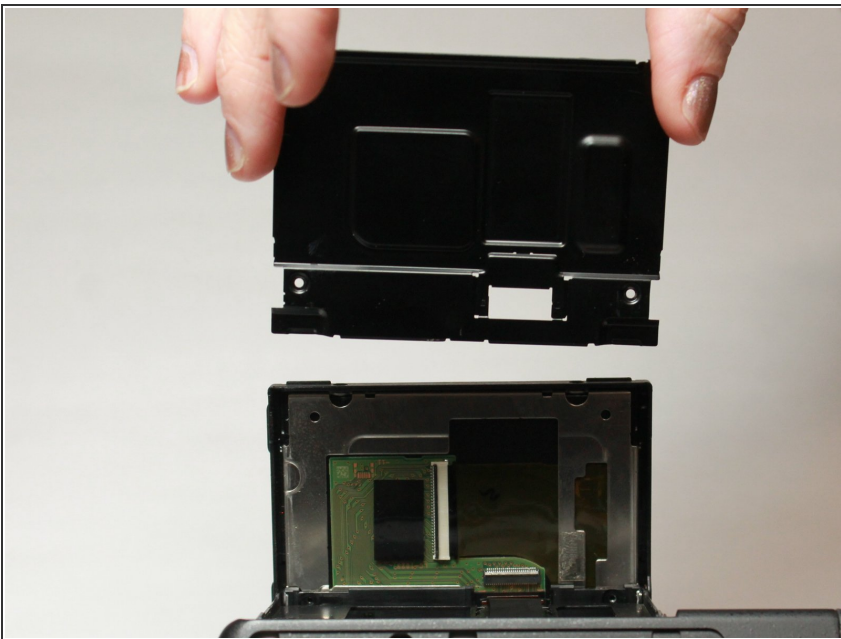
- Lift the LCD screen to unscrew the 2 screws on its underside.

Step 3



- Unscrew the 2 screws on the bottom of the LCD screen.

Step 4



- Carefully remove the back of the LCD cover.

Step 5



- Carefully pull up the LCD front cover from the metal internal frame.
- ⚠ Be careful of the wire ribbon as it is fragile.

To reassemble your device, follow these instructions in reverse order.

This document was last generated on 2019-07-22 08:47:24 AM.