



# Hisense Chromebook C11 Battery Replacement

How to replace a Hisense Chromebook C11 battery.

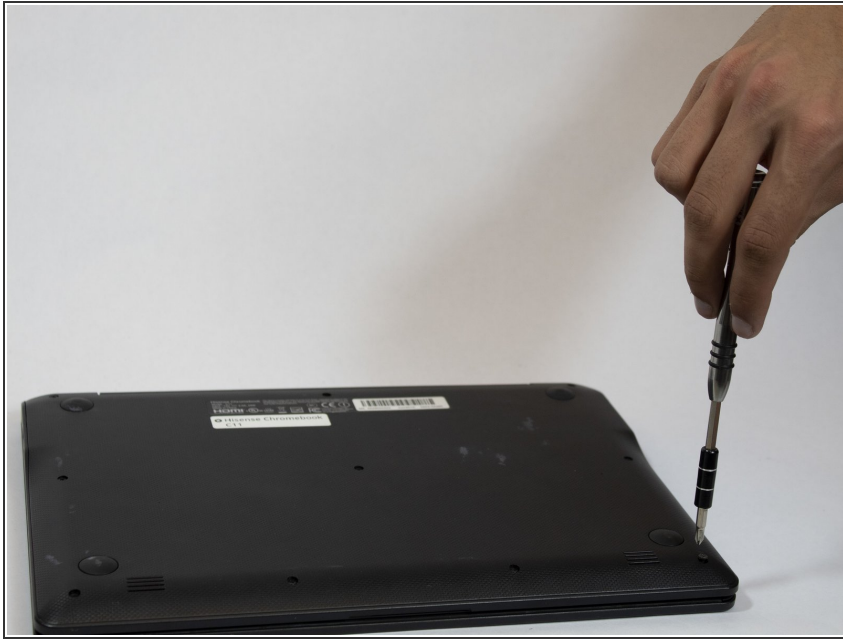
Written By: Alexander Burrell




## **TOOLS:**

- [iFixit Opening Tools](#) (1)
  - [Phillips #00 Screwdriver](#) (1)
  - [Phillips #000 Screwdriver](#) (1)
  - [Tweezers](#) (1)
-

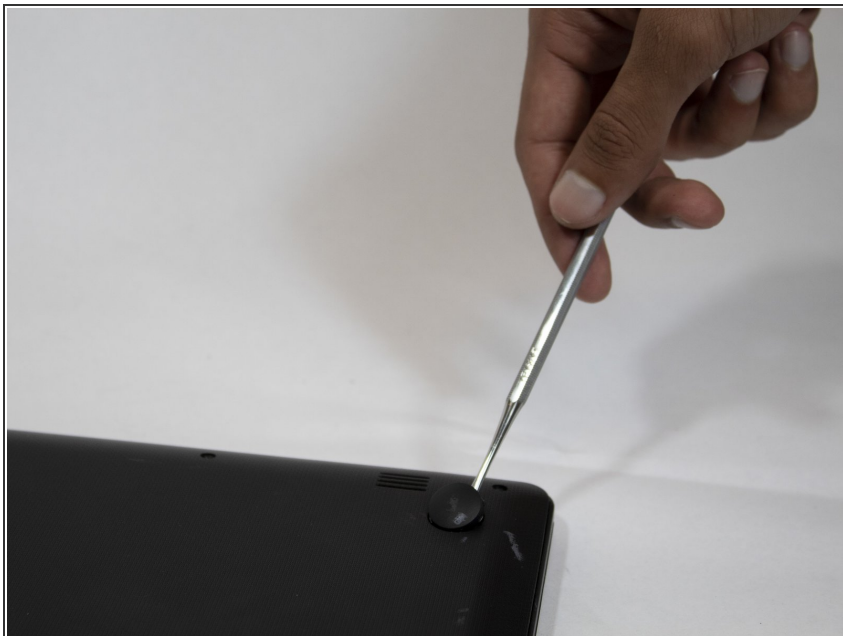
## Step 1 — Back Panel



 Make sure that the laptop is turned off and disconnected from any power sources.

- Flip over the Chromebook.
- Unscrew the screws with PH11 screwdriver.

## Step 2



- Remove the front two hub caps.

### Step 3



- Unscrew the screws with PH11 screwdriver.

### Step 4



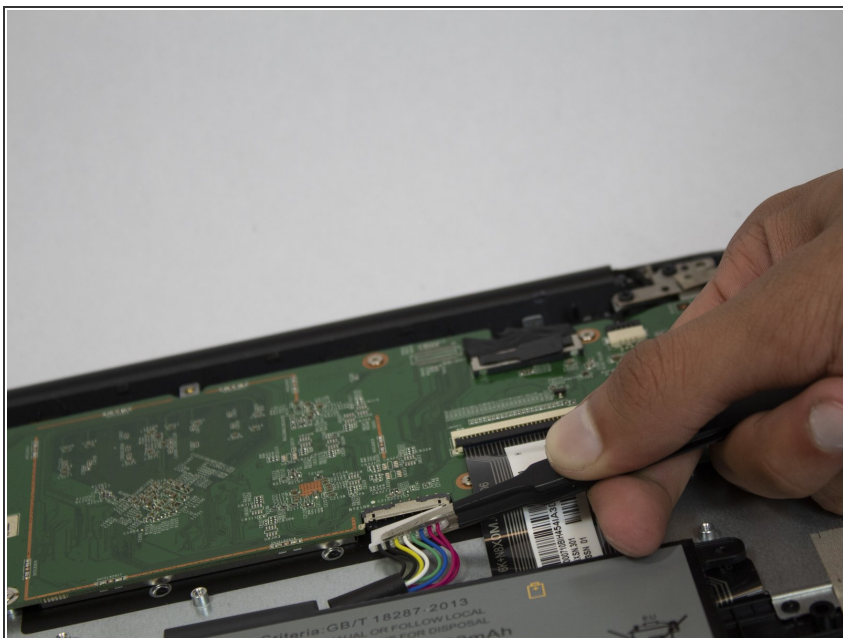
- Pry the perimeter of the case with a plastic opening tool.
- Remove the back panel.

## Step 5 — Battery



- ⚠ Be careful not to puncture the battery with the screwdriver or any sharp instrument.
- Unscrew the screws with a PH000 screwdriver.

## Step 6



- Use tweezers to unplug the battery.

## Step 7



- Remove the battery.

To reassemble your device, follow these instructions in reverse order.

This document was last generated on 2019-01-09 11:39:05 AM.