



Dim Blue LED on Skullcandy Hesh 2 Wireless

Dim or black out the annoying blue LED on a Hesh 2 Wireless headset.

Written By: Ian



INTRODUCTION

Dim or black out the annoying blue LED on a Hesh 2 Wireless headset.

TOOLS:

- [Phillips #0 Screwdriver](#) (1)
 - [Sharpie OR Black Electrical Tape](#) (1)
-

Step 1 — Remove Cushions



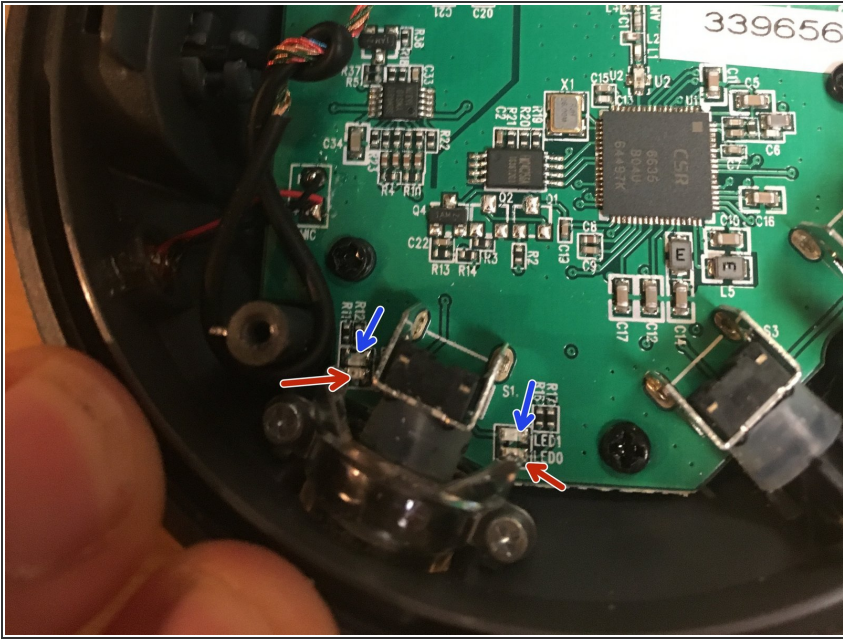
- Remove the cushion from both speakers.

Step 2 — Opening The Speaker



- On the *right* speaker, remove the 4 screws shown.
- Remove the plastic plate, but be careful not to damage the speaker wires.

Step 3 — Covering LEDs



- On the bottom left of the board, near the power button, are LED0 through LED3. The odd numbered LEDs are blue, and the even numbered LEDs are red.
 - With the sharpie, carefully mark the tops of the LEDs. Alternatively, if you want to black out the lights entirely, use very small pieces of electrical tape to cover them.
- ⓘ It's a good idea to verify the color of each LED by powering on the headset while it's open.

To reassemble your device, follow these instructions in reverse order.