



# Philips Wake-Up HF3520/01 Disassembly

Opening of the notoriously stubborn wake-up light.

Written By: Max



---

## INTRODUCTION

This bed side light is a bit tricky to open.

Purpose of this was to install an antenna jack (BNC) to attach a telescopic antenna or roof aerial.

---

### TOOLS:

- [Spudger](#) (1)
  - [Phillips #00 Screwdriver](#) (1)
-

## Step 1 — Start



- There is a screw under the shiny UL sticker. Remove sticker and screw to remove this bottom panel. There are two tabs holding the panel into clock/light, so you might have to wiggle panel forward and out to remove it.
- The bottom panel does not help gaining access to more screws. See next step

## Step 2 — Prying open



- Flipping the light upside down, pry upward the small plastic strip with hooks that has to be removed.

## Step 3 — Button ring



- Next unscrew the two philips head screws to remove the button ring.

## Step 4 — Front screen shield



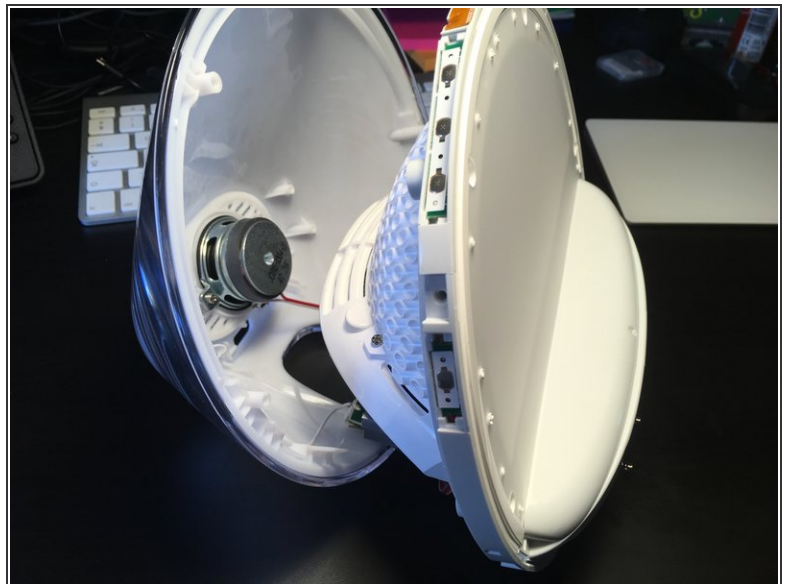
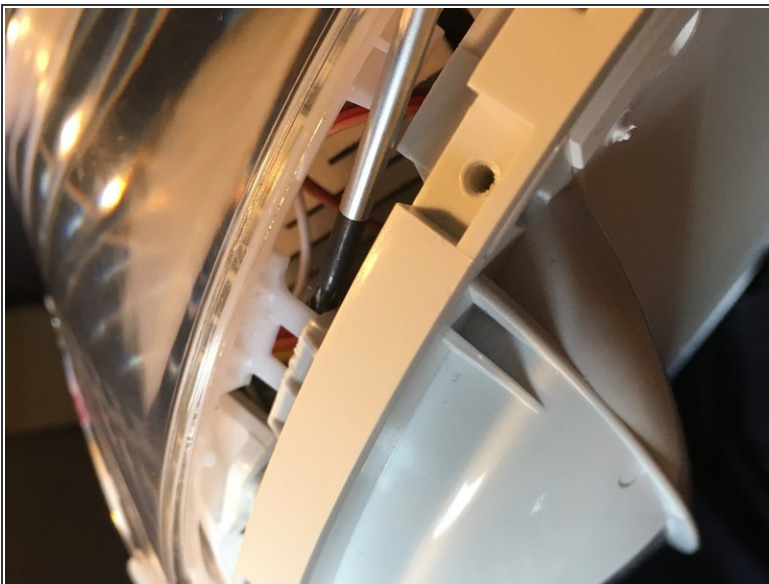
- Now the screws holding the front screen shield need to be removed and the shield can be pulled away to the front.

**i** Screw organization note for later: these screws have pointed ends

**⚠ CAREFUL NOT TO DAMAGE THE INTERNAL SCREEN**

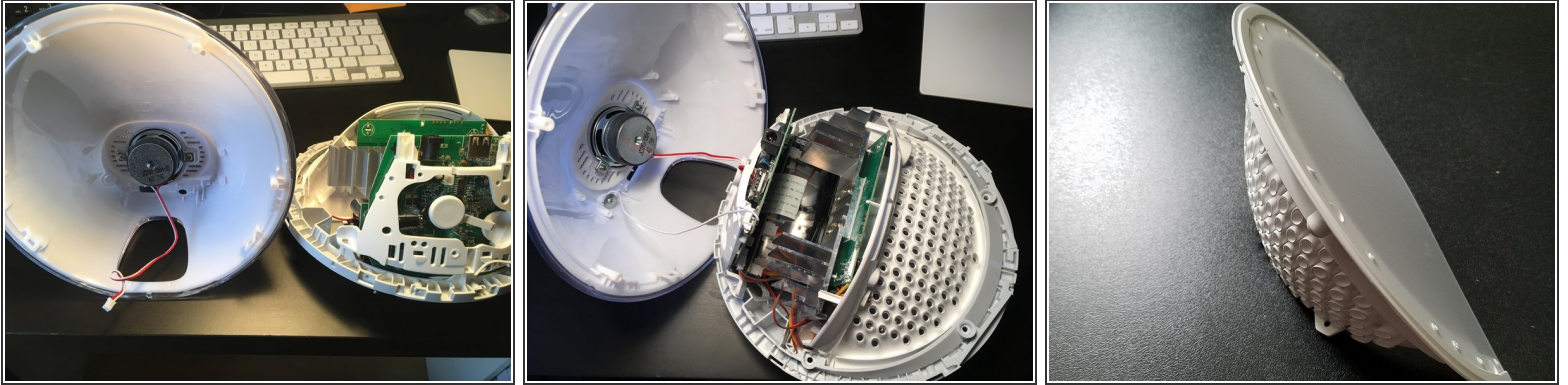
- Unscrew the four screws holding the inner screen assembly in place.

## Step 5 — Inner screen assembly



- The inner screen assembly can be pulled out slightly to reveal tabs on each side that hold the assembly in.
- Pry the back tabs inwards to release.

## Step 6 — The guts



- The screen is connected to the plastic domed back with holes. There are two screws at the back of the base of this domed panel. Remove screws to remove screen.
- ⓘ Set screen panel aside for safe keeping.
- 📌 More to see and modify...