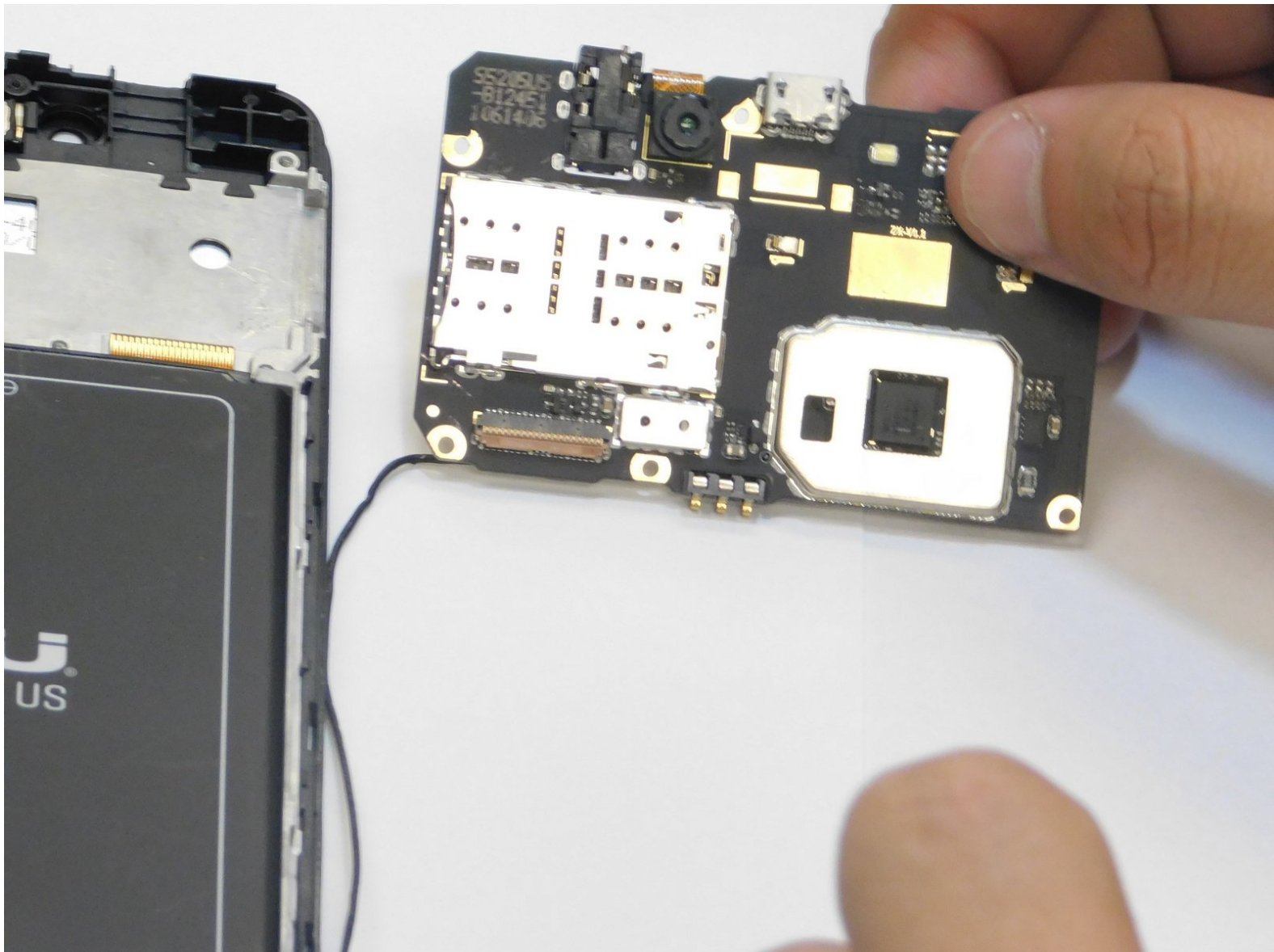




Blu Grand M2 Charging Port Assembly Replacement

Replace the charging port on the BLU Grand M2.

Written By: Richard Hills



INTRODUCTION

This guide was made to help you fix your problem if you are experiencing a BLU GRAND M2. Charging failure this will help replace the charging port assembly on your own. You will be removing the back panel from the phone, removing the screws, and finding the charging port.

Edit: This guide will help you replace the charging port for the BLU GRAND M2.



TOOLS:

- [Suction Handle](#) (1)
- [1 x Opening Picks](#) (1)
- [T2 Torx Screwdriver](#) (1)
- [Soldering Iron](#) (1)



PARTS:

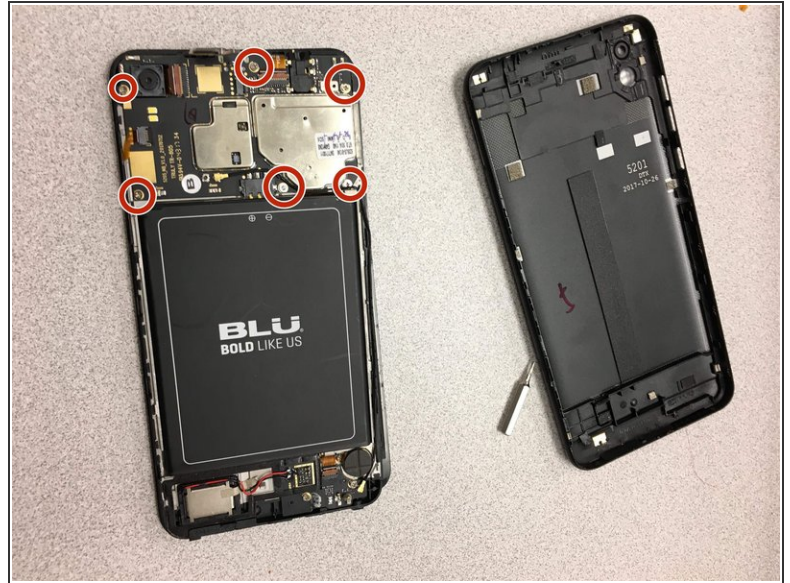
- [motherboard blu grand m2](#) (1)

Step 1 — Charging Port Assembly



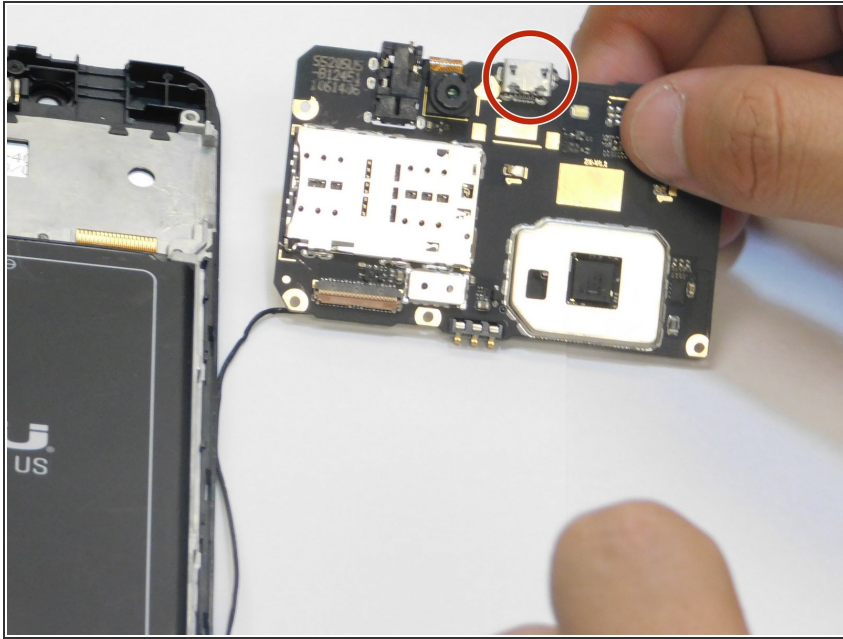
- Locate the Torx screws shown in **(Figure 1)**.
- Remove the screws with the T2 Torx screwdriver as shown in **(Figure 1)**.
- ⓘ Place screws off to the side.

Step 2



- Once the Torx screws have been removed, use a pry tool and a suction tool to remove the back plate. (**Figure 1**).
- Locate and remove the six Torx screws on the motherboard. Use the T2 Torx screwdriver to remove the Torx screws. (**Figure 2**).
- ⓘ Make sure to disconnect all other connections from the camera. (**Figure 2**).

Step 3



- Carefully pry the motherboard assembly from the phone.
- The charging port assembly is soldered to the motherboard piece. Remove the port with a soldering iron.
- Once you have removed the faulty port, replace it with the new port. Attach the new charging port with the soldering iron.
- After installing the new port, repeat the steps in reverse order to reassemble the phone.

To reassemble your device, follow these instructions in reverse order.