



Blu Grand M2 Power Button Replacement

A Guide on how to replace the power button on a BLU Grand M2.

Written By: Alan Rodriguez



INTRODUCTION

If your phone is not responding when you are pressing the power button, you may need a power button replacement. This guide has been made to help you install your power button on your own. It will show you how to remove the screws, removing the back panel, and detach the power button.

TOOLS:

- [iFixit Opening Tools](#) (1)
 - [iFixit Opening Picks set of 6](#) (1)
-

Step 1 — Power Button



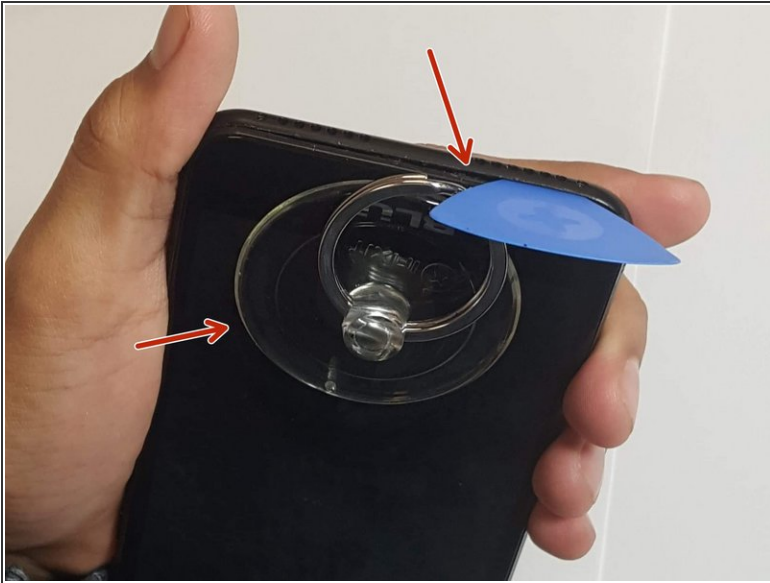
- Locate the power button show in **Figure 1**.

Step 2



- Begin by locating the torx screws and remove them show in **(Figure 1)**.

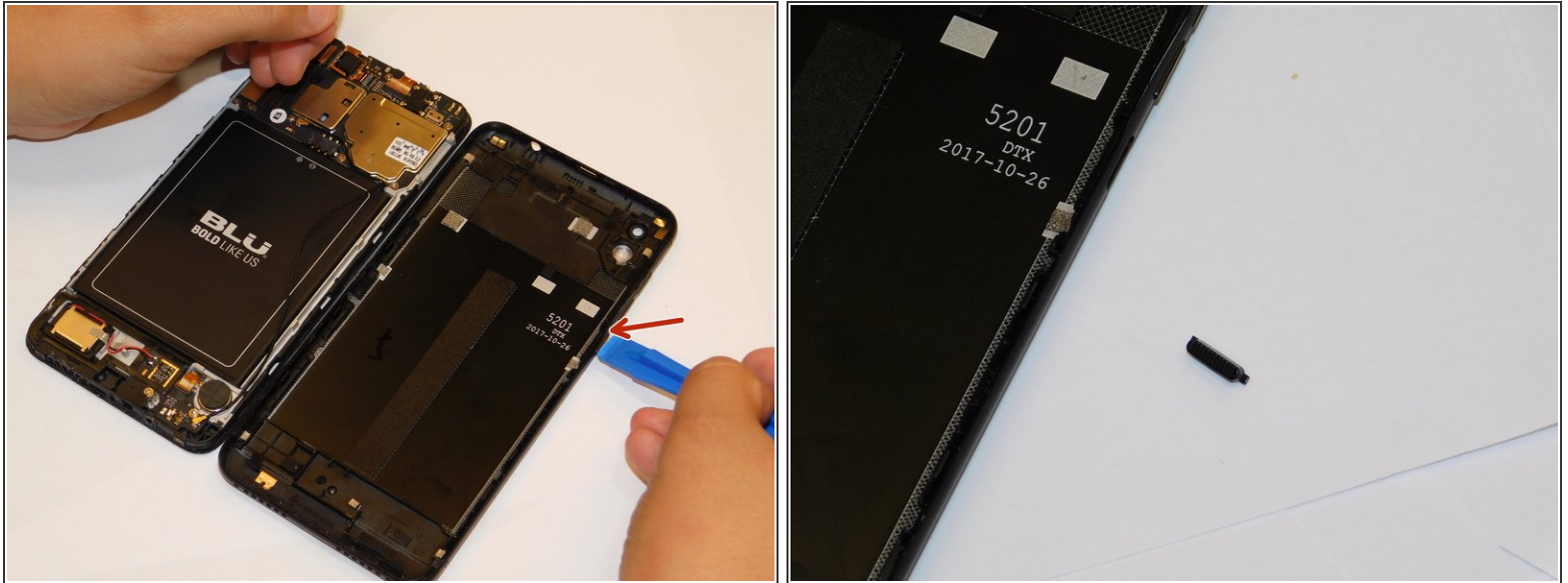
Step 3



- After removing the screws, begin by use the suction tool and pry tool, to slowly remove the black plate.

⚠ Be Cautious do not damage phone display and or inside components while using pry tool and suction tool.

Step 4



- Once the back panel is removed, locate the power button, remove it, and replace it with the new power button shown in **figure 1**.
- After you successfully replace the power button, repeat the steps in reverse order to reassemble the phone.

To reassemble your device, follow these instructions in reverse order.