



# LG TV 49SJ8000 - WiFi module disassembly

Remove both the WiFi and Bluetooth modules

Written By: Diogo Cordova



---

 **TOOLS:**

- [Chave Philips](#) (1)

 **PARTS:**

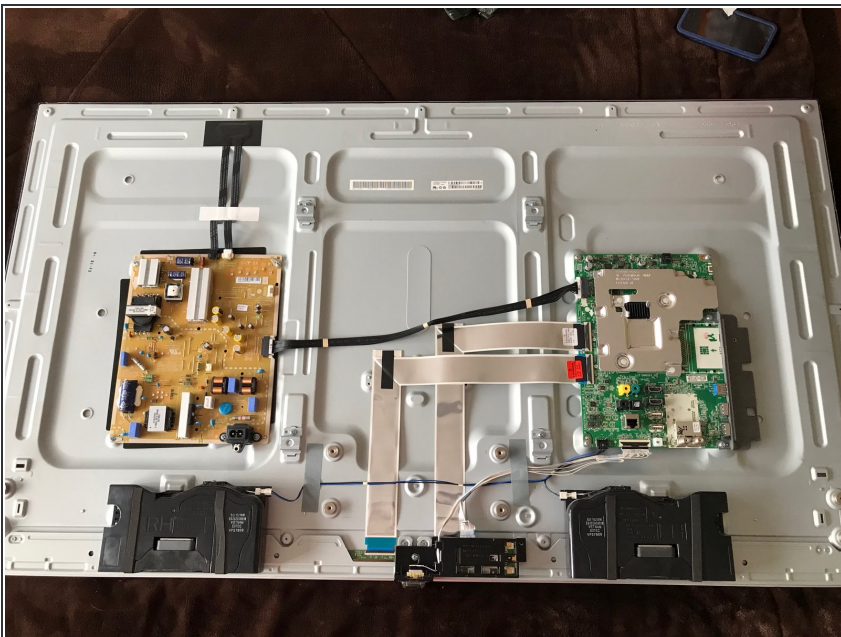
- [New Item](#) (1)
-

## Step 1 — LG TV 49SJ8000 - WiFi module disassembly



- Place the display on a soft surface in order to help prevent scratches and/or breaking the display.
- Remove the 4 Phillips screws that hold the stand in place (if installed).
- Remove all screws from the rear panel.
- There are two screws near to the input and output connectors.
- On the lower part of the TV (next to the speakers) there are two additional screws that need to be removed.

## Step 2



- With the panel removed, its possible to visualize the boards and its connections.
- To the left, there is the power supply, which supplies power to the TV.
- To the right, there is the logic board.
- On the lower section you can locate both speakers.

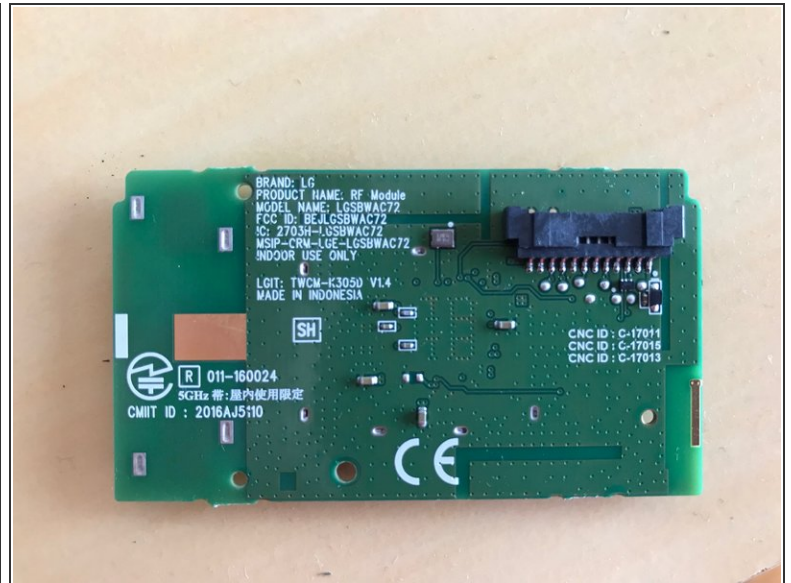
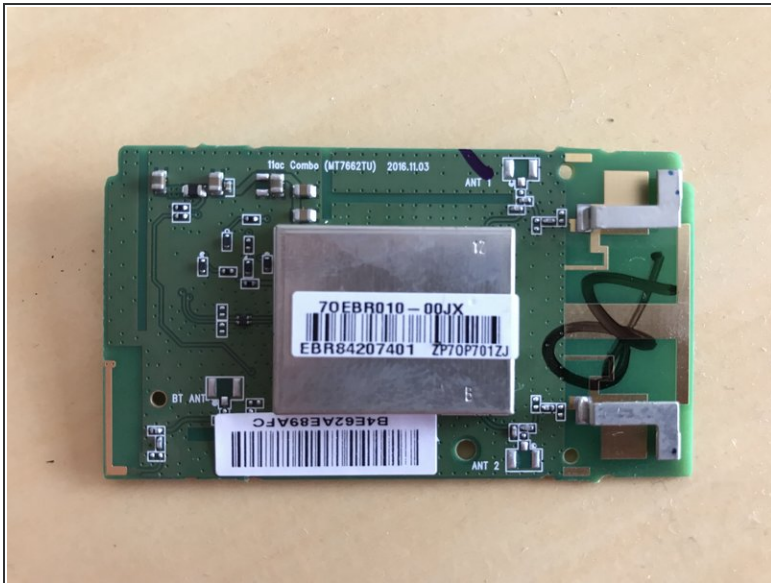
- Between both speakers you can find the Wi-Fi and Bluetooth module.

### Step 3



- To remove the Wi-Fi and Bluetooth module, there is only one screw holding the entirety of the structure.

## Step 4



- Wi-Fi module removed.
- If your TV shows the message Device Connected/Device Disconnected, Wi-Fi not working or Magic remote not working, its possible that there is a bad connection on the module.
- Remove the flex cables carefully and install them once again.
- In order to remove the flex cable, there is a little tab that needs to be lifted.

To reassemble your device, follow this instructions in inverse order.