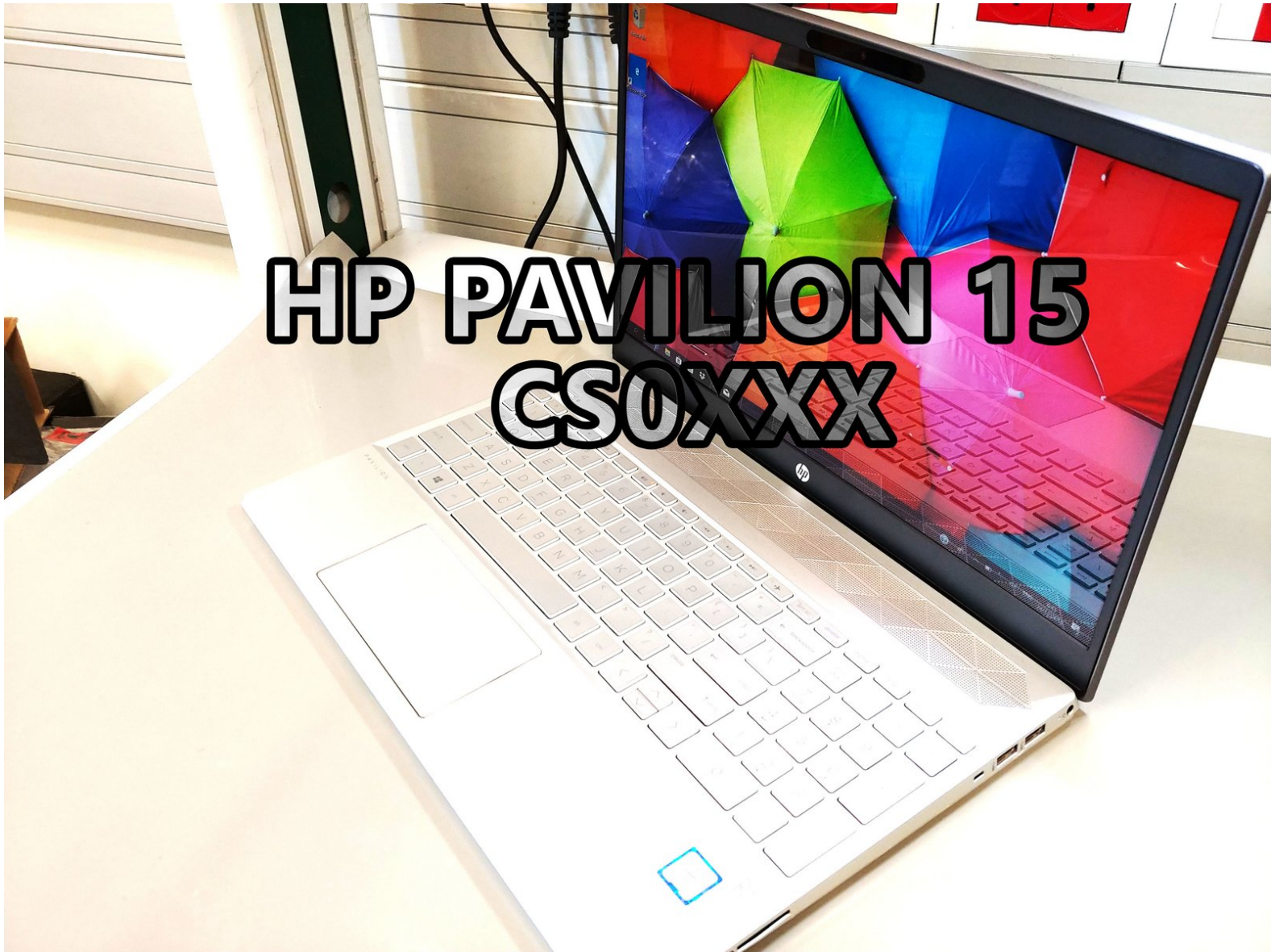




HP Pavilion 15 cs0xxx Unboxing Teardown

Written By: IT FIX



INTRODUCTION

Spec:

CPU: Intel Core i7-8550U 1.8 GHz

RAM: DDR4 12 GB (4+8) 2400MHz

SSD: Samsung 256GB, 2280 M.2 SATA-3 SSD

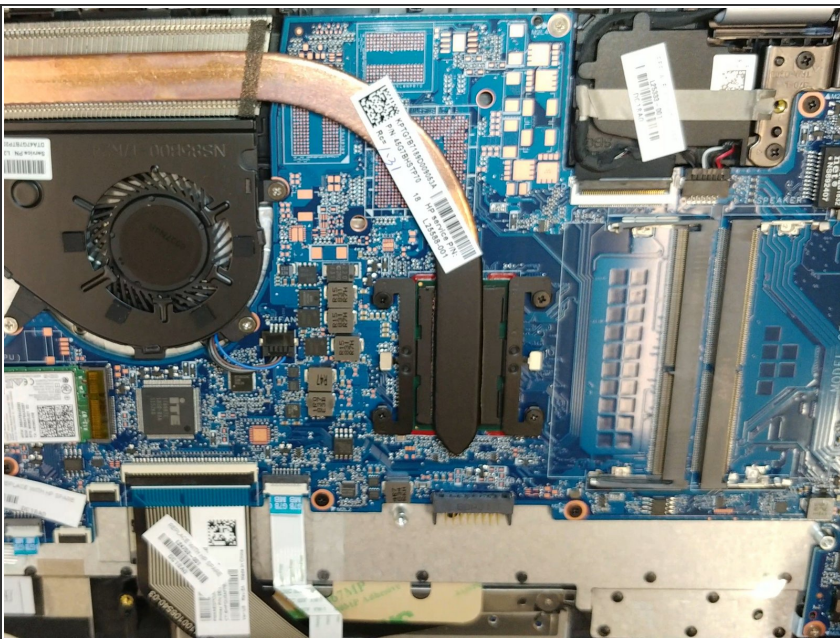
GPU: Intel® UHD Graphics 620

Step 1 — HP Pavilion 15 cs0xxx Unboxing Teardown



- Insert wisdom here.

Step 2



- Insert wisdom here.

To reassemble your device, follow these instructions in reverse order.

This document was last generated on 2019-02-27 06:38:22 AM.