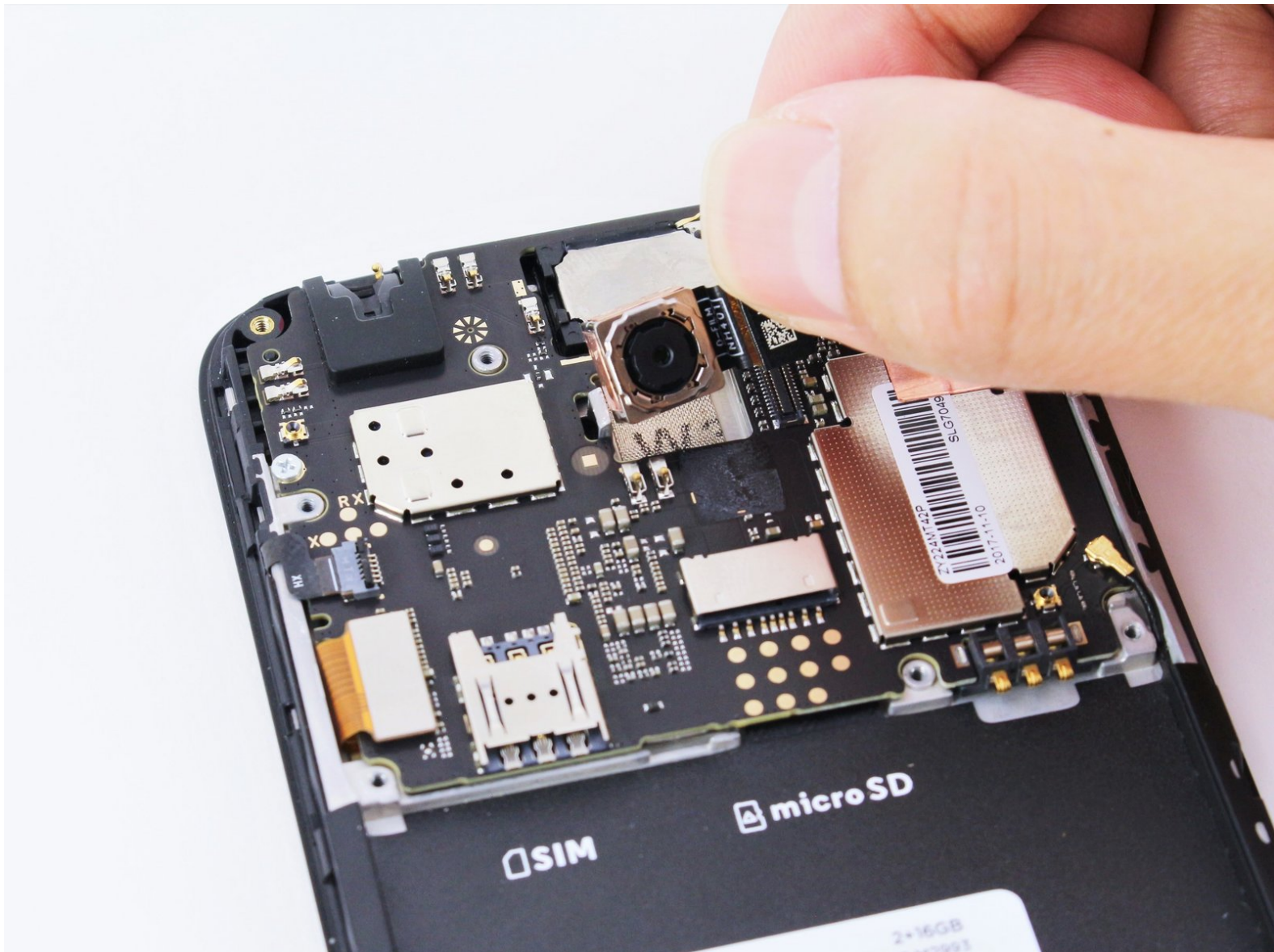




# Motorola Moto E4 Rear Facing Camera Replacement

This guide shows how to remove or replace the Moto E4 rear facing camera.

Written By: Nate Tjepkema



---

## INTRODUCTION

Use this guide to remove or replace your Moto E4 rear facing camera.

---

### TOOLS:

- [Spudger](#) (1)
  - [iFixit Opening Tools](#) (1)
  - [Phillips #00 Screwdriver](#) (1)
-

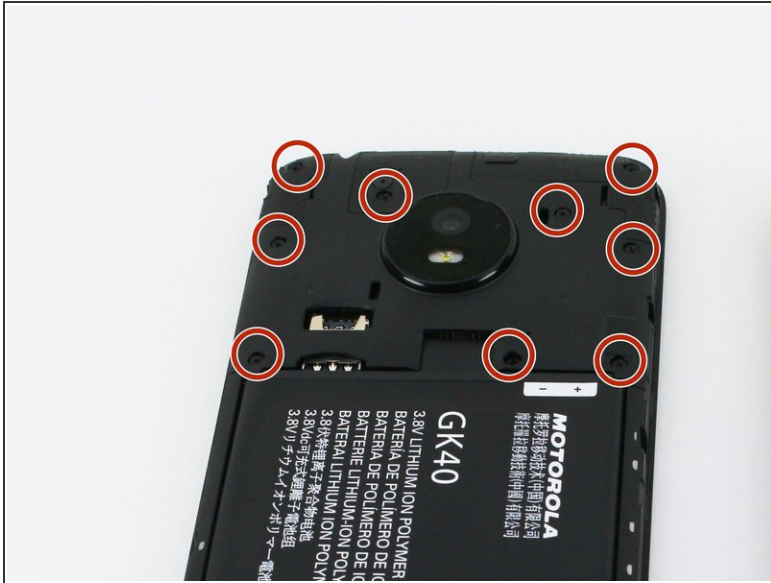
## Step 1 — Remove the rear cover



 Before removing the battery, power off your Moto E4.

- Remove the plastic cover by gently prying it up from the notch at the bottom right corner of the phone.
- With the phone face down, lift the battery up by the labeled tab and remove it from the device.

## Step 2 — Remove the motherboard cover



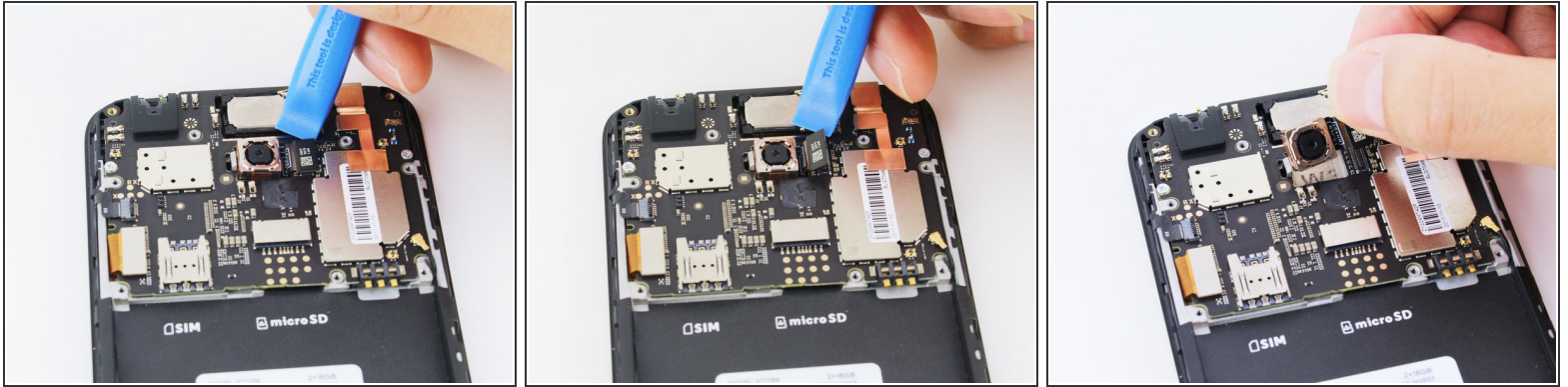
- i** The battery is shown inserted in the Moto E4, but it should be removed before performing the following step.
- Remove all nine 4 mm Phillips screws from the top plastic cover.

## Step 3



- Gently pry up the plastic cover using a plastic opening tool.
  - Start by inserting the tool under the cover's right edge, as indicated by the first picture.
  - Pry up, and continue prying around the rest of the cover in a counter clockwise path.
- Once loose, remove the plastic cover from the phone.

## Step 4



**i** This step can be skipped if you are only removing the front-facing camera. For all other repairs, continue as follows.

- Disconnect the rear-facing camera by prying straight up on the connector on its right side.
- Remove the rear-facing camera from the Moto E4.

To reassemble your device, follow these instructions in reverse order.