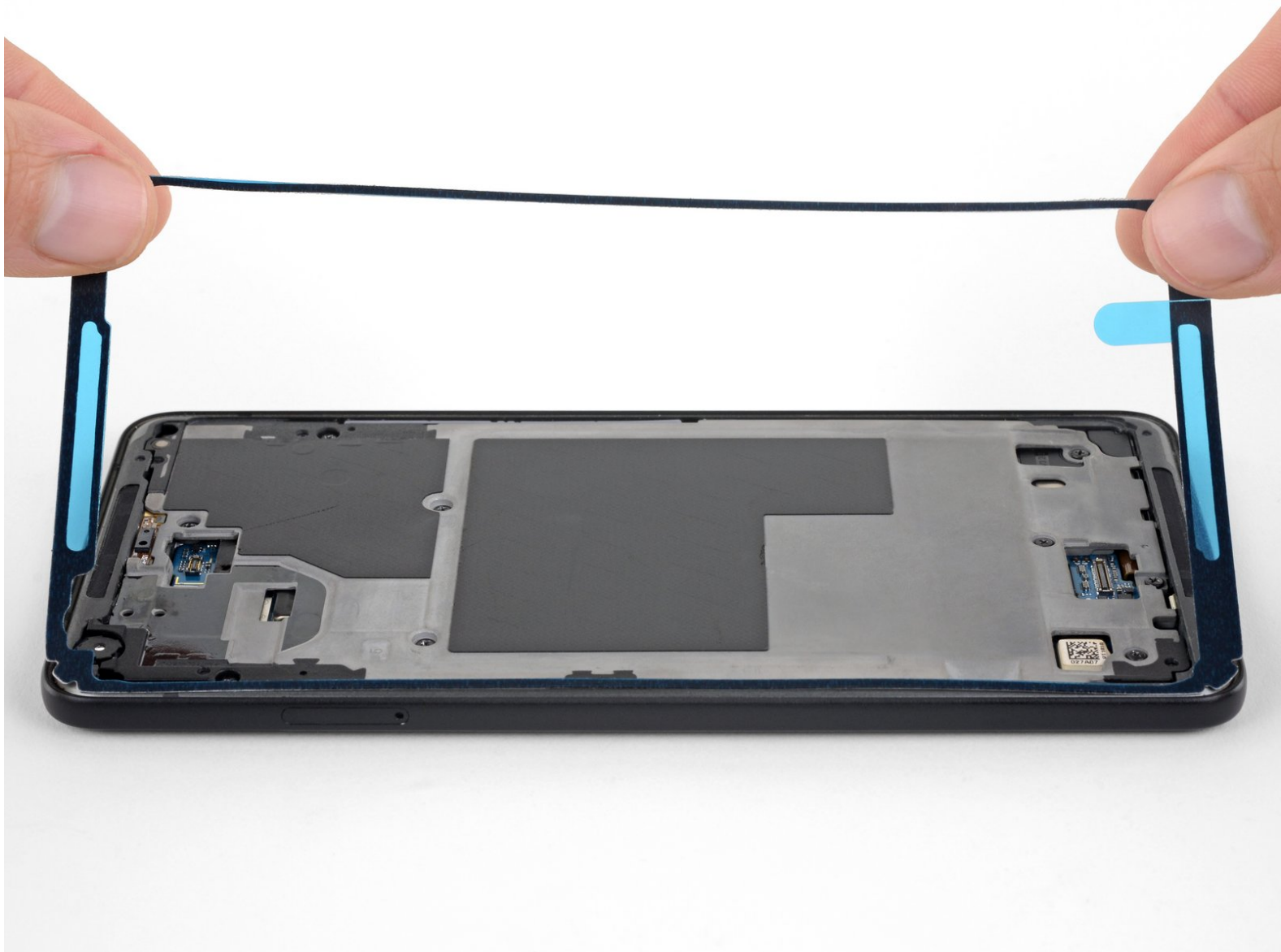




Google Pixel 2 XL Display Adhesive Replacement

Replace the adhesive under the edges of a Pixel 2 XL screen.

Written By: Adam O'Camb



INTRODUCTION

Use this guide to apply replacement adhesive to your Pixel 2 XL's display.

Before you begin, you should already have removed the Pixel 2 XL's display. Detailed instructions for removing the display can be found [here](#).



TOOLS:

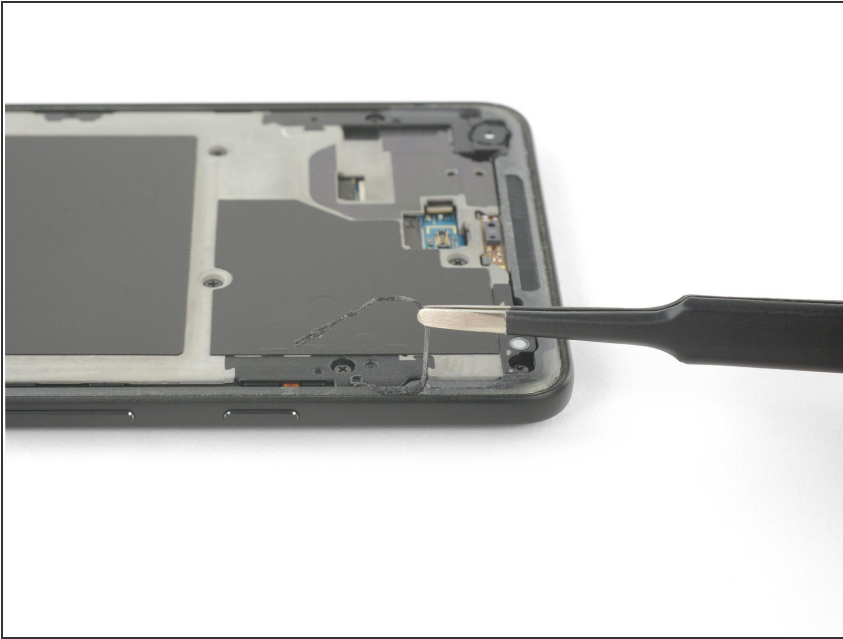
- [Tweezers](#) (1)
- [Spudger](#) (1)



PARTS:

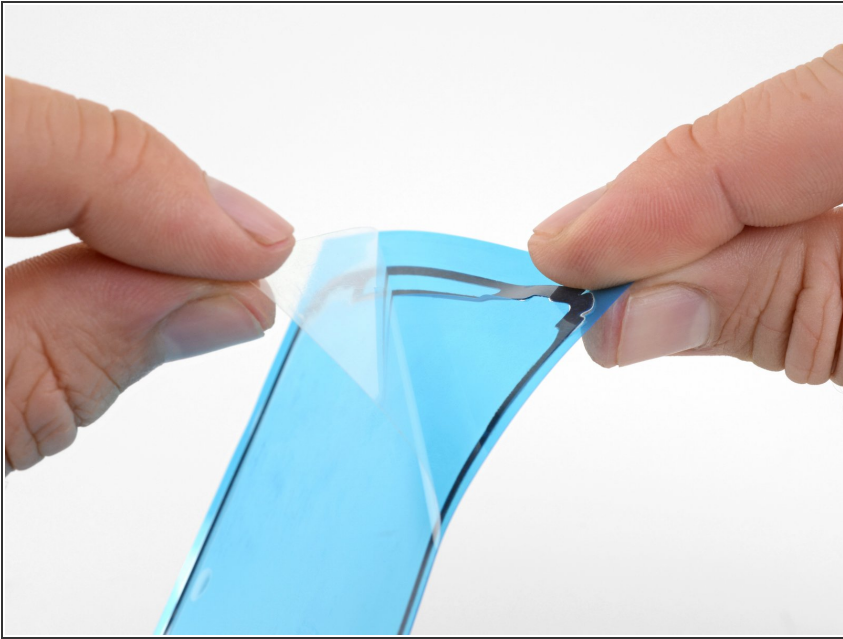
- [Google Pixel 2 XL Display Adhesive](#) (1)

Step 1 — Display Adhesive



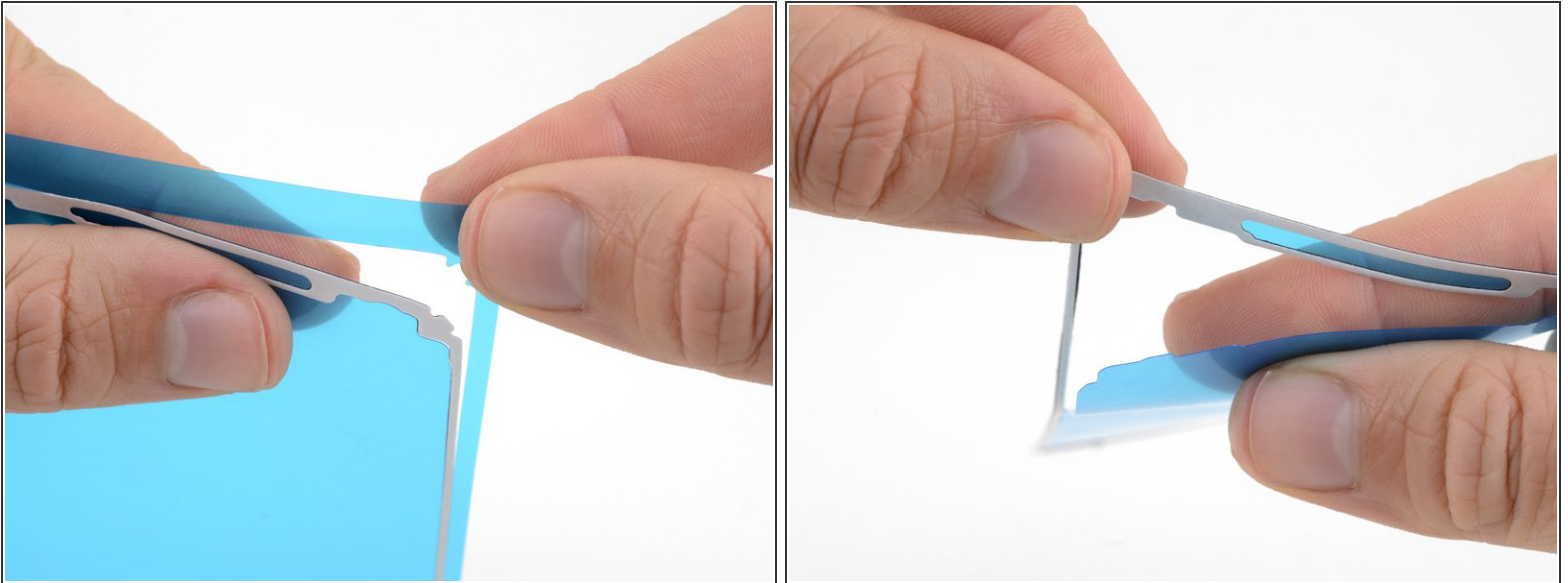
- Remove any trace of the old adhesive from the Pixel's case.
- If you're reinstalling your existing display, be sure to remove any remaining adhesive from the back of your display as well.
 - ⚠ Take special care to remove any small glass fragments.
- After removing all traces of glue and glass, clean the adhesion areas with high concentration isopropyl alcohol (at least 90%). This will ensure a better seal for the display.
- ⓘ If your new display doesn't come with speaker grilles or a front-facing camera gasket, make sure to install those before applying display adhesive.

Step 2



- Peel the clear backing layer off of the replacement adhesive.

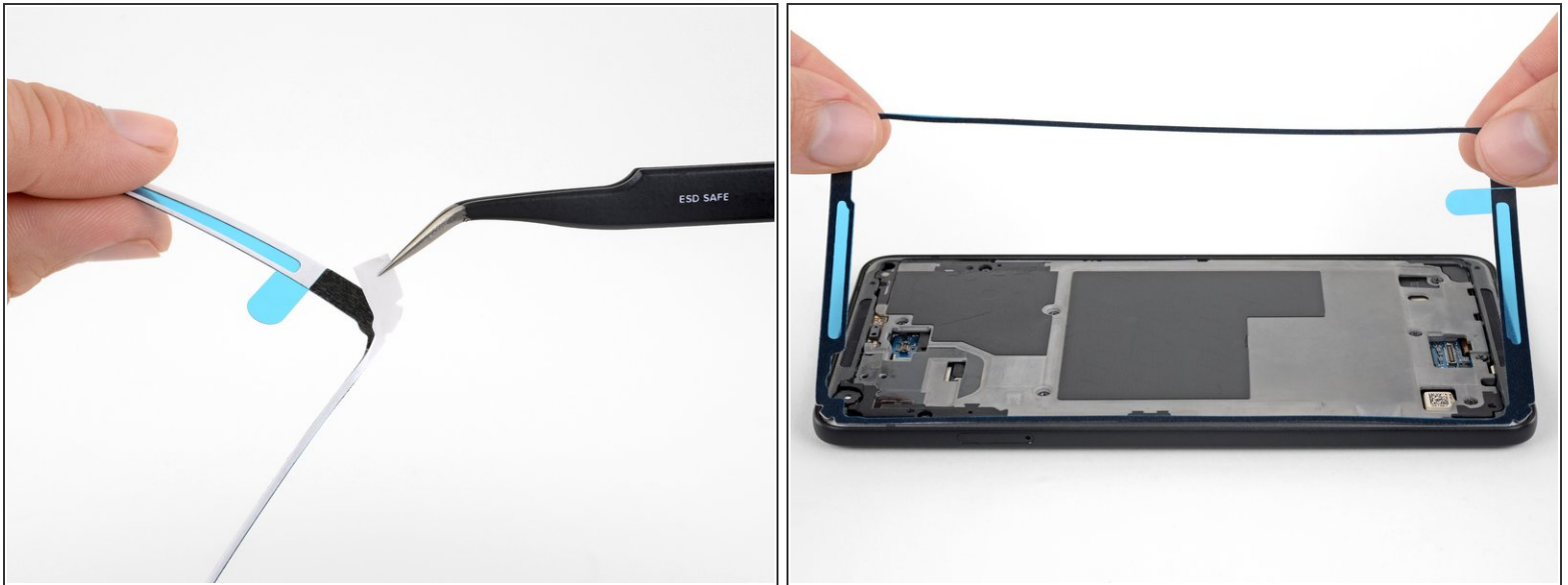
Step 3



- i** There are perforations along the inner and outer edges of the adhesive strip.

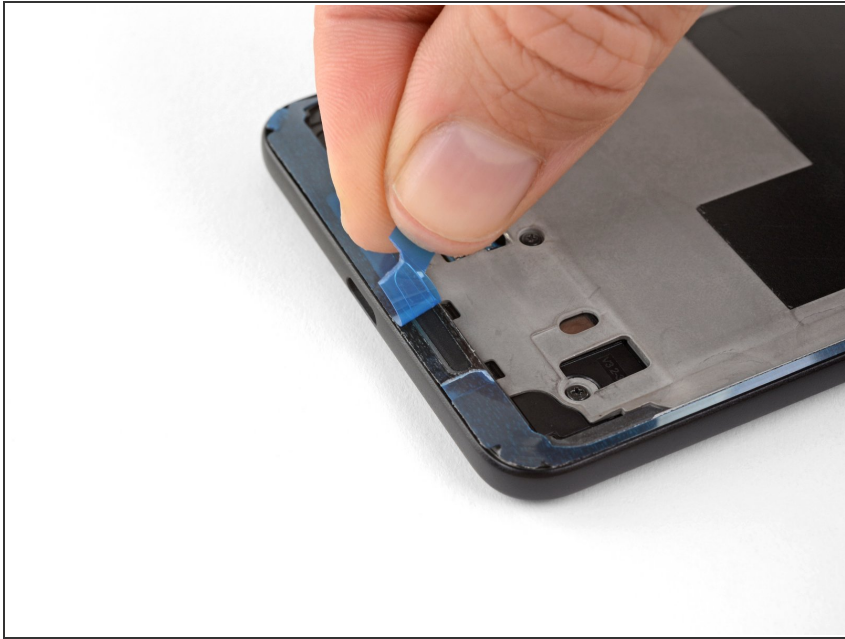
 - Carefully tear along the perforations to separate the outer portion of the adhesive backing from the adhesive strip.
 - Carefully tear along the inner perforations to separate the inner portion of the blue backing from the adhesive strip.
- !** Be very careful not to tear the adhesive, the white backing, or the blue backing underneath the adhesive. Only remove the blue plastic surrounding the adhesive strip.
- i** When you're done, you should have just have a phone-shaped ring of adhesive with blue backing on one side and white backing on the other.

Step 4



- Peel away the white backing, exposing one side of the adhesive strip.
- Carefully place the adhesive strip on the phone case, with the exposed side down, and the blue backing up.
- Line up the speaker holes in the adhesive strip over the speakers to correctly position the adhesive strip on the case.
- With the adhesive lined up, use your finger or a spudger to press the adhesive strip down against the case.

Step 5



- When you are ready to seal the phone, carefully peel away the blue backing without peeling the adhesive off of the phone.
- ⓘ You can tear or cut through the blue backing right next to the pull tab to make it easier to remove the backing.
- Return to your Pixel 2 XL's replacement guide to finish assembling your phone.

Repair didn't go as planned? Check out our [Answers community](#) for troubleshooting help.