



# RIDGID Belt Sander R2740 Tension Lever Spring Replacement

This guide will replace the Ridgid Belt Sander R2740 tension lever spring that locks the sandpaper in place.

Written By: Bryan Garcia Gomez



## INTRODUCTION

The tension lever is a small handle located on the right side of the belt sander if the power cord is pointing towards you. The lever is connected to a spring that dictates the tension for the removal and replacement of sand paper. Over time, the spring that is located behind the tension lever will wear down and cause the tension lever to malfunction. This guide will help in the replacement of the tension lever spring with a T20 Torx Screwdriver.

### TOOLS:

- [T20 Torx Screwdriver](#) (1)

### PARTS:

- [Spring \(OD 14.47 X 38.1\)](#) (1)

## Step 1 — Tension Lever Spring



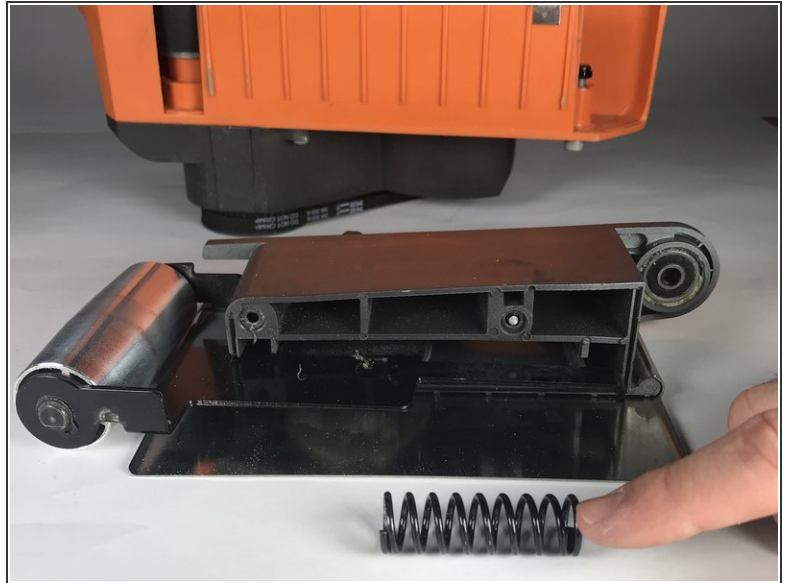
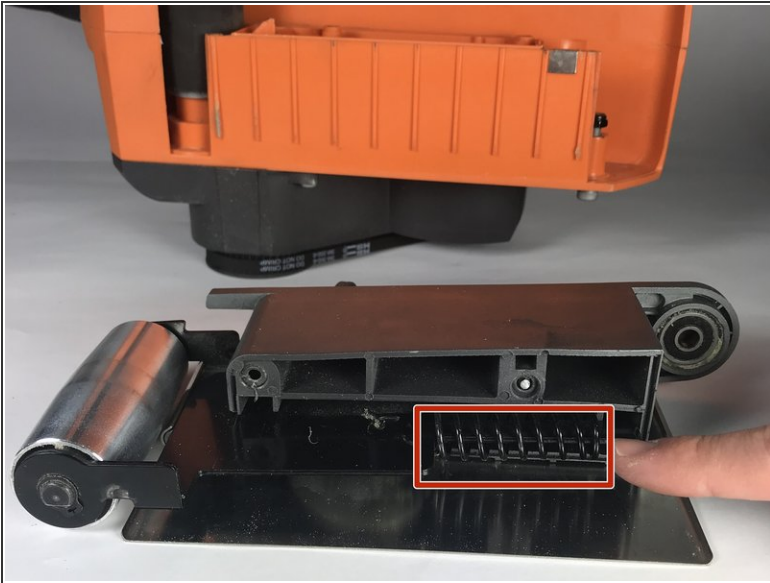
- Turn the belt sander so that the RIDGID logo is facing you.
- Flip the tension lever to the open position so that the tension on the spring is released.
- Remove any sandpaper that is on the belt sander.

## Step 2



- Using the T20 Torx Screwdriver, remove the two (2) M4 X 19 mm screws on either side of the the belt tension release lever.
- Remove the side plate to reveal the spring.

### Step 3



- Remove and replace the spring (OD 14.47mm X 38.1mm).

To reassemble your device, follow these instructions in reverse order.