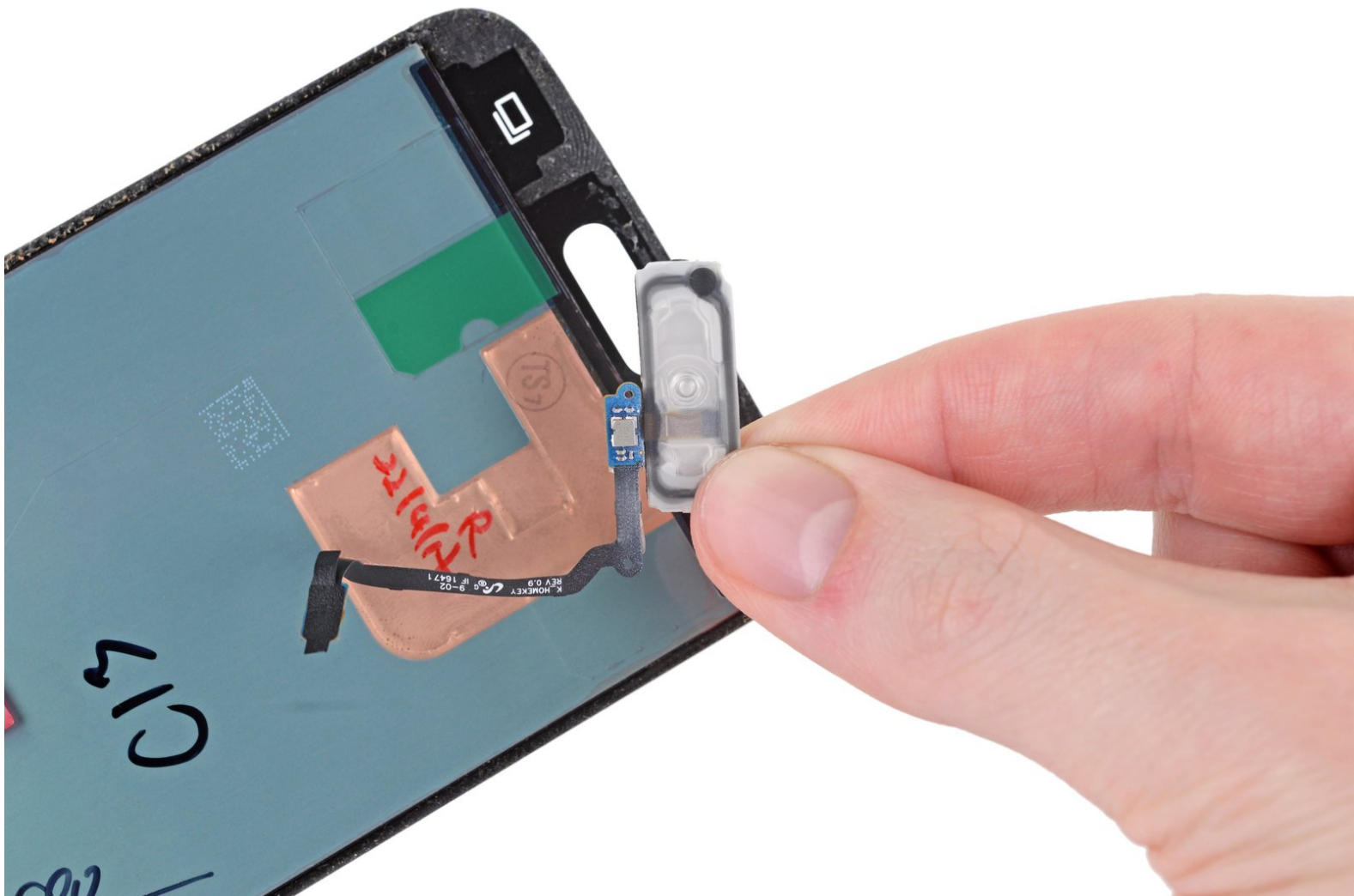




Samsung Galaxy S5 Home Button Replacement

Use this guide to replace the home button/fingerprint sensor cable assembly in a Samsung Galaxy S5.

Written By: Taylor Dixon



This document was generated on 2019-09-23 02:43:29 AM (MST).

INTRODUCTION

The home button in the Samsung Galaxy S5 doubles as a fingerprint reader. The fingerprint reader functionality relies on a fragile cable assembly that is commonly broken upon opening the device. Follow the instructions in this guide to replace a broken home button, or transfer your old home button to your new screen if your replacement screen did not come with one.

This guide is a conditional add-on to the [Display Assembly](#) guide, and begins after the last step of that guide.



TOOLS:

- [iFixit Opening Tools](#) (1)
- [iOpener](#) (1)



PARTS:

- [Galaxy S5 Home Button and Cable Assembly](#) (1)

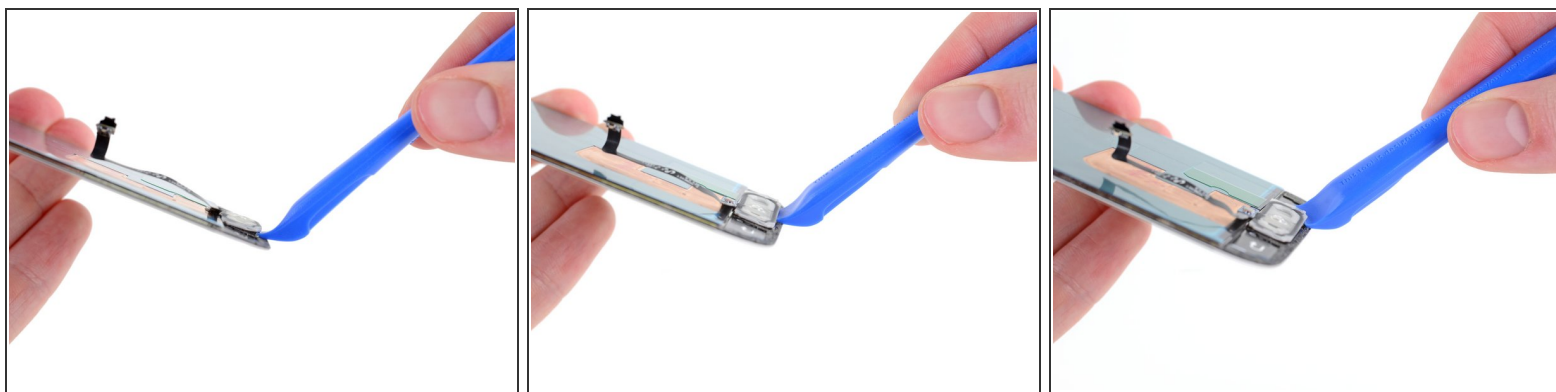
Step 1 — Home Button



i This guide is a conditional add-on to the [Galaxy S5 Display Assembly](#) guide. If you need to replace your home button but have not yet opened your device, start [here](#).

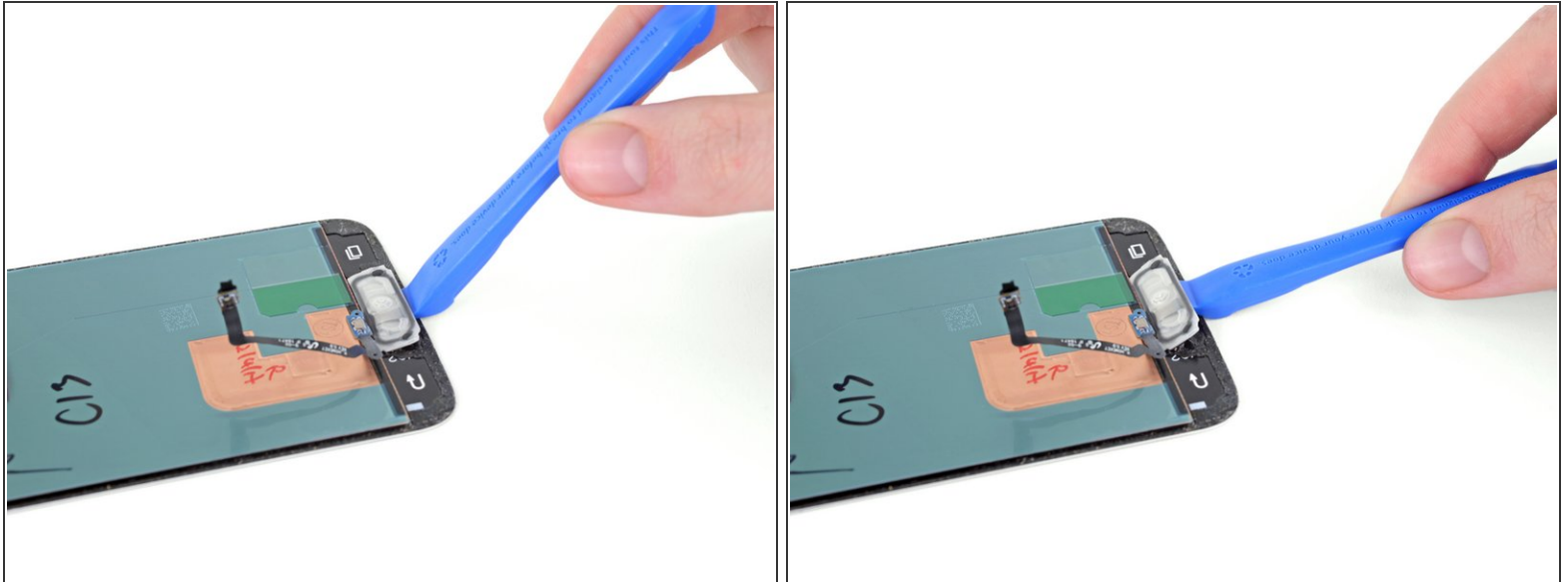
- The clear rubber backing of the home button assembly is lightly adhered to the back of the display. The adhesive should be easy to cut through with an opening tool. If you have trouble removing the assembly in the following steps, try heating the area using an iOpener or a hair dryer to loosen the adhesive.

Step 2



- Insert either end of an opening tool into the gap between the white rubber backing of the home button assembly and the screen.
- Work your way around the bottom edge of the button, gently cutting through the adhesive holding it in place.

Step 3



- Once most of the adhesive around the bottom of the button has been broken, use your opening tool to pry it up.

Step 4



- Grab the lifted portion of the home button assembly and gently pull it away from the display, tearing the rest of the adhesive.
- ⚠ As you pull the assembly away, the rubber backing may begin to separate from the home button. The home button is only connected to the rubber backing by a fragile cable, so do your best to keep them together as you pull the assembly out.
- ➦ If you are transferring your home button to a new display, the original adhesive should be strong enough to keep it in place.
- ⓘ If the original adhesive is *not* strong enough to hold the button in place while you re-install the display, you can lay the button in the chassis, and then install the display over it—the display assembly will keep the button in place.
- ➦ If you are installing a new home button, remove the plastic film covering the adhesive, then carefully align the button with the display and press it into place.

To finish reassembling your device, head back over to the [Display Assembly](#) guide!