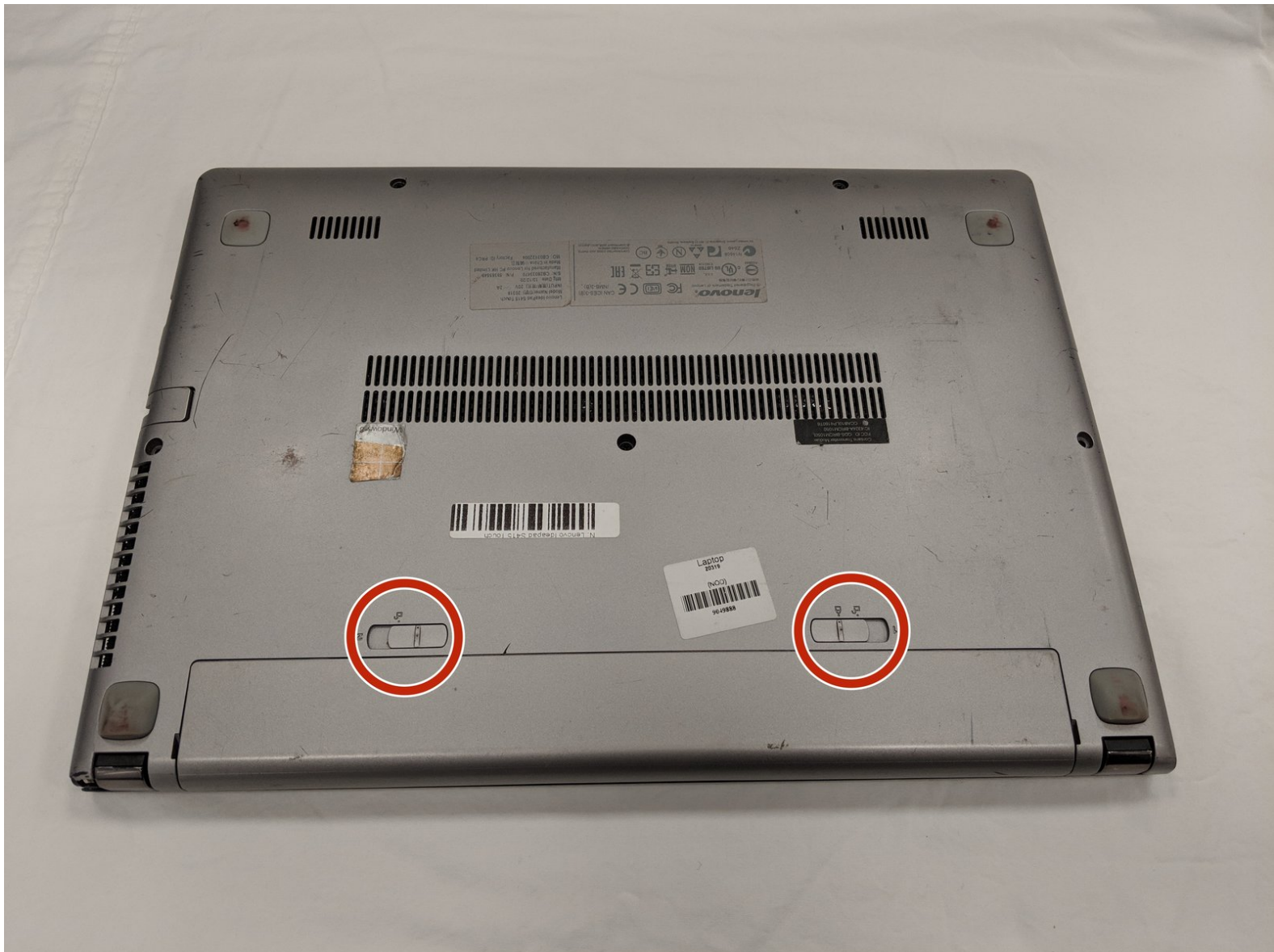




Lenovo Ideapad S415 Touch Battery Replacement

How to replace the battery in a Lenovo Ideapad S415 Touch.

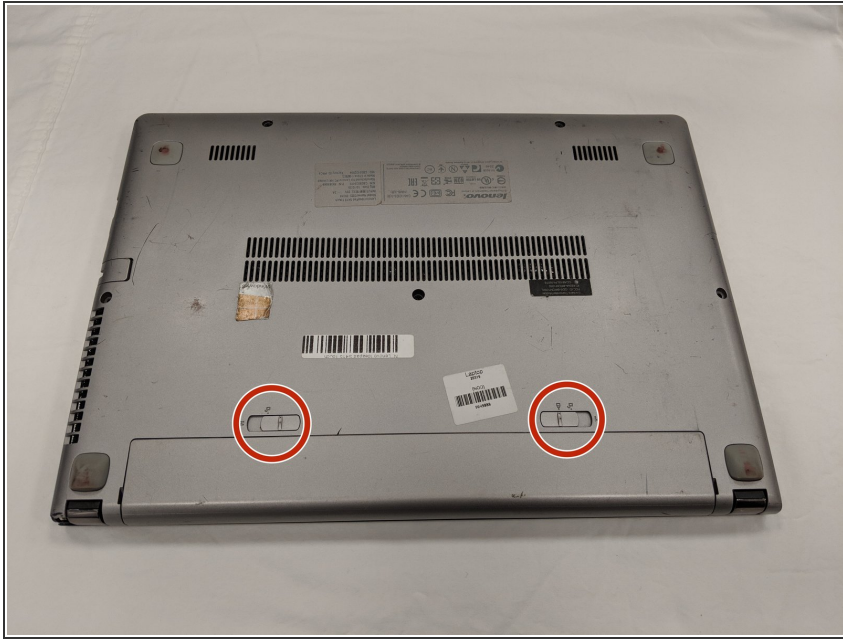
Written By: Casey Zhang



INTRODUCTION

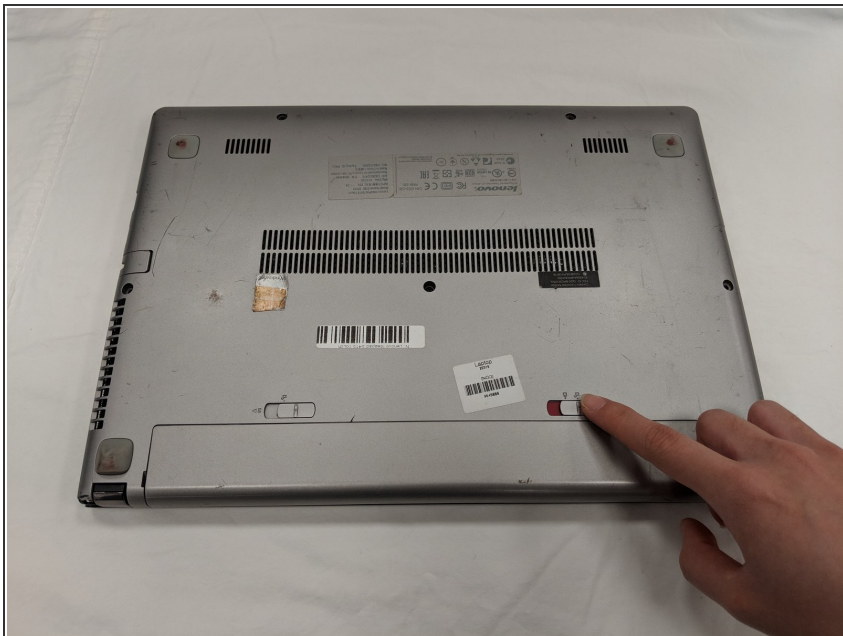
If you are having trouble with your computer's battery life, or if your computer will not power on, this is the guide to help solve your problems. There are no tools needed to perform any steps, but be careful in putting the battery back into the laptop.

Step 1 — Battery



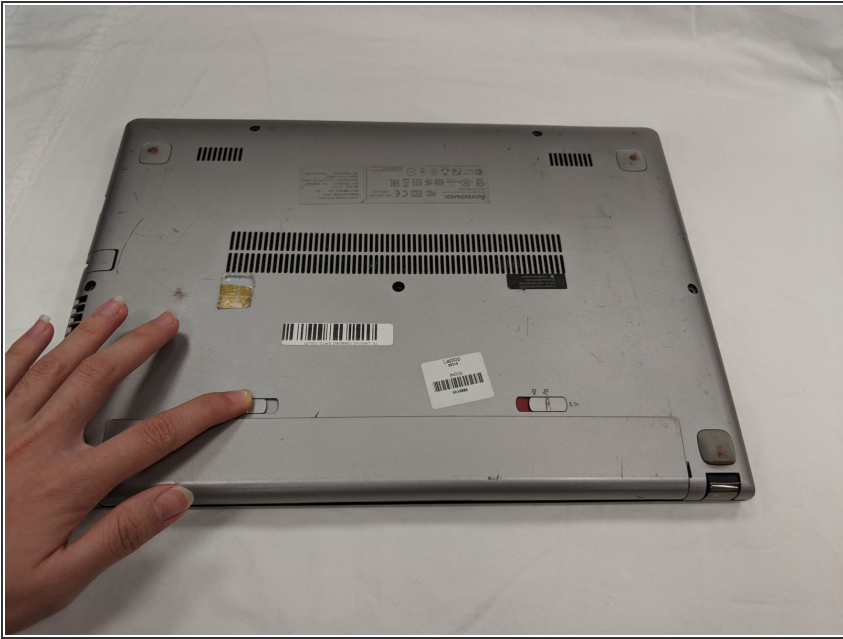
- Flip laptop over bottom side up.
- Locate the two battery release switches.

Step 2



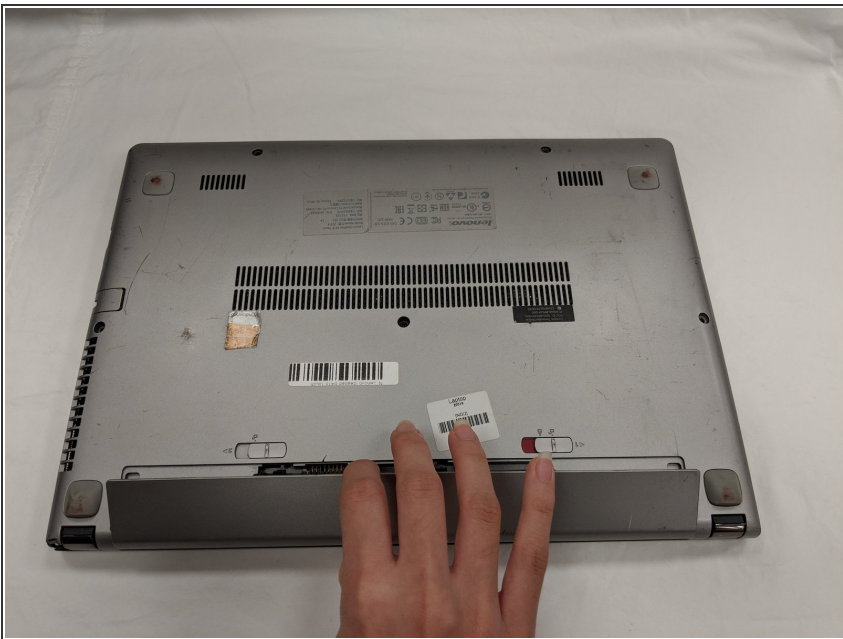
- Use your finger to push the battery release switch labeled "1." The red indicates that the switch is unlocked.

Step 3



- Use your finger to push the battery switch labeled "2."

Step 4



- Once both switches are unlocked, the battery will release.

Step 5



- ✦ When replacing the battery make sure the two protruding holes line up with the slot.
- Carefully remove the battery.

To reassemble your device, follow these instructions in reverse order.