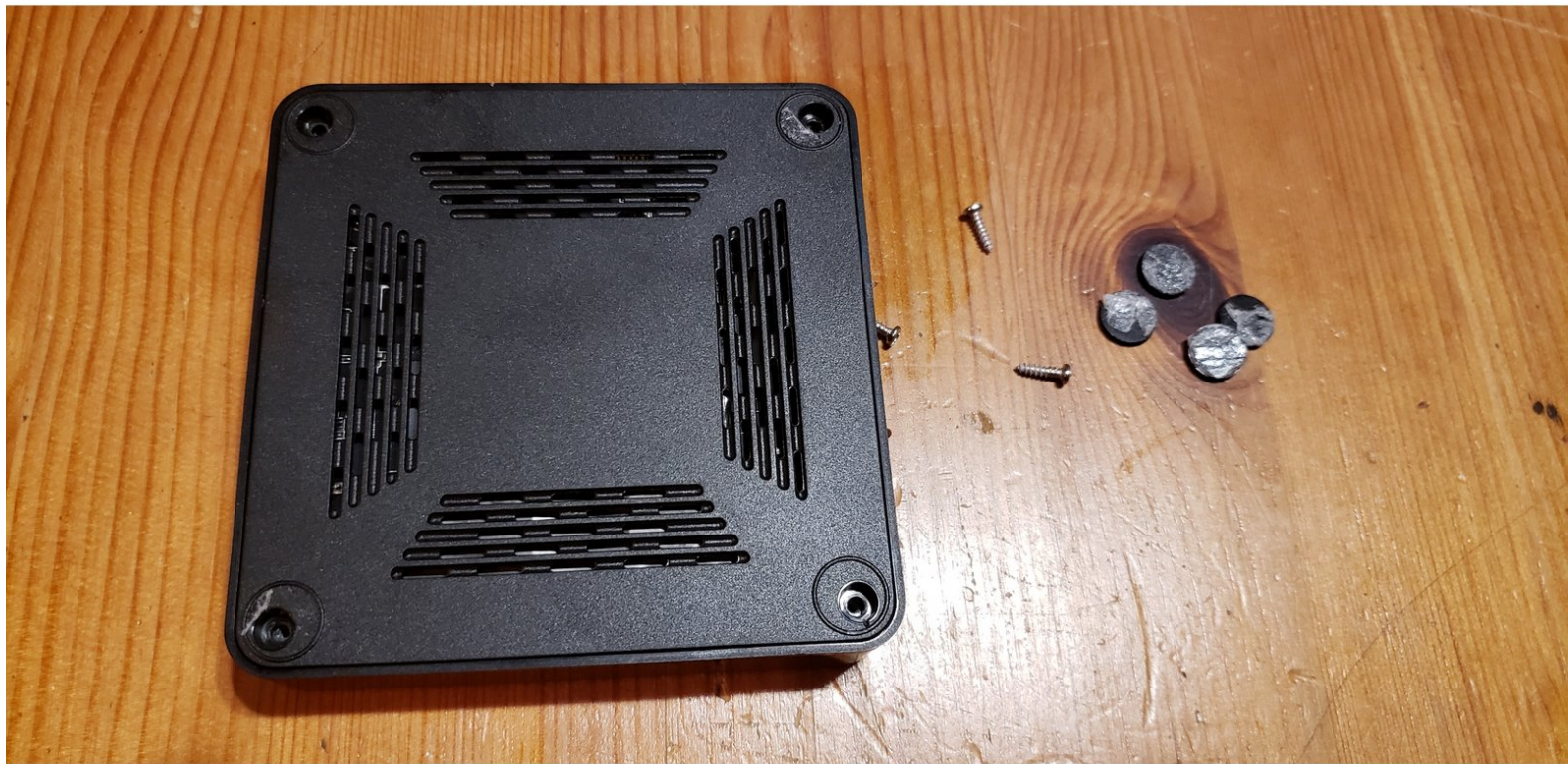




Kingbox (Generic Android) Teardown

Teardown of a Generic Android Tv Box

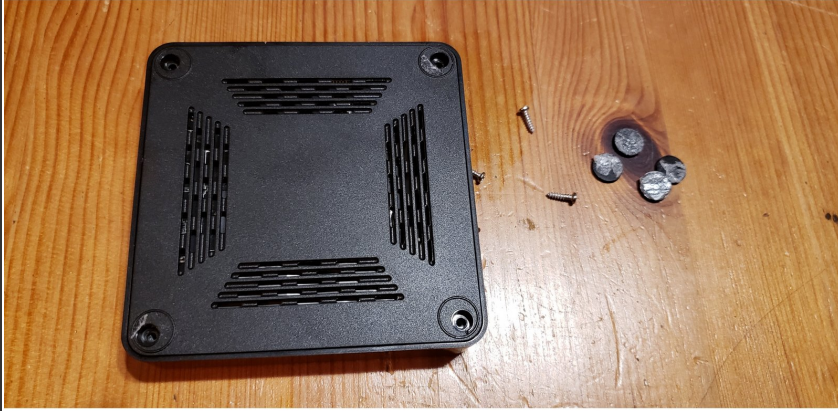
Written By: Dan



 **TOOLS:**

- [Phillips #2 Screwdriver](#) (1)
-

Step 1 — Open the bottom



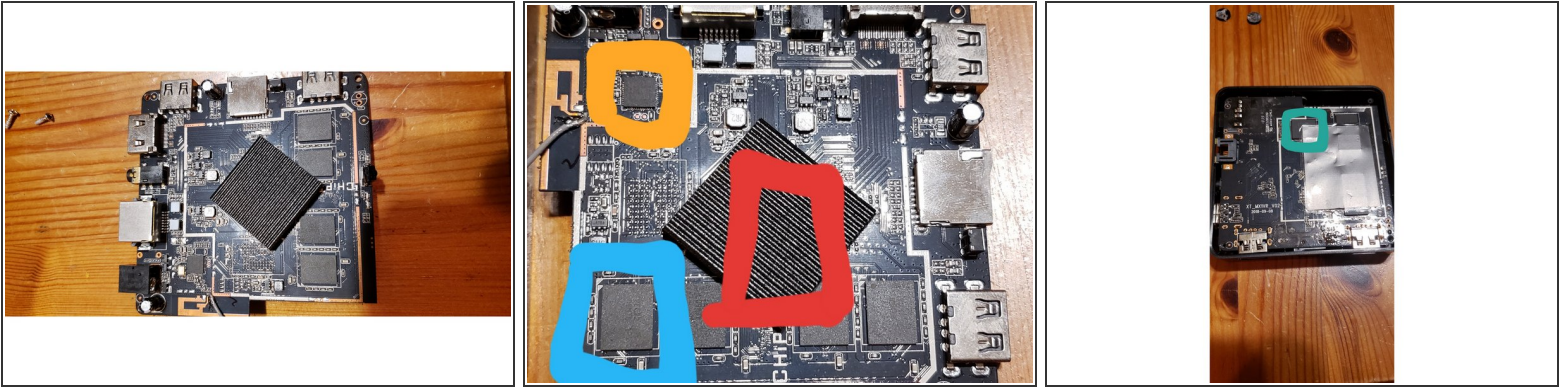
- Remove the four pads.
- Use a Philips 2.0 and remove the four screws
- Remove bottom cover

Step 2



- Remove board from case

Step 3 — Motherboard



- samsung 641 kmvtu000lm chip - was also in the galaxy s3
- Wifi chip - icomm sv6256p
- Micron ram
- Rockchip cpu