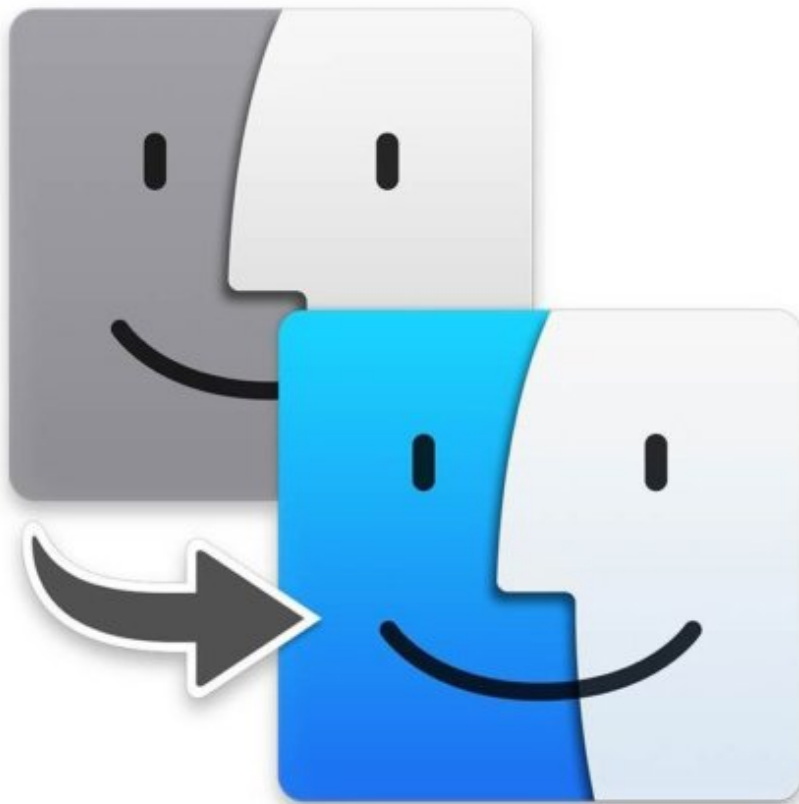




How to migrate data to a new drive in macOS

Use this guide to transfer photos, music, settings, and other data to macOS on a Mac with a newly-installed hard drive or SSD.

Written By: Taylor Dixon



INTRODUCTION

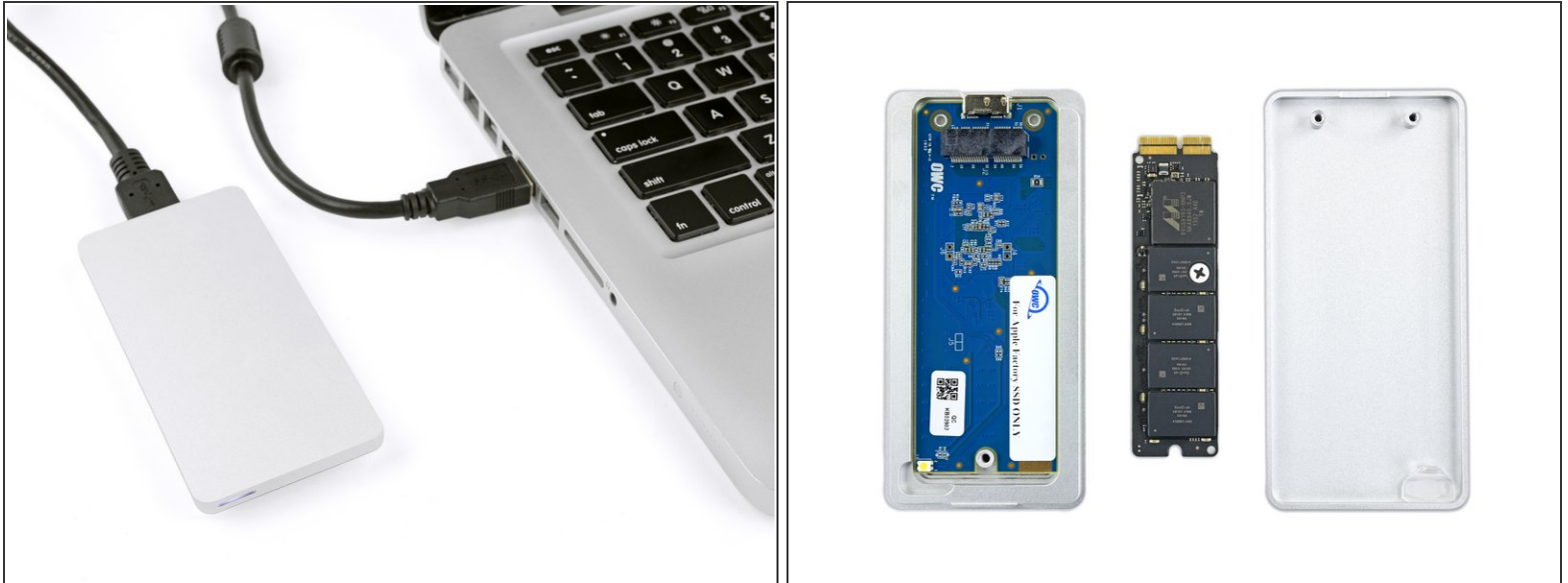
After you've replaced or upgraded the SSD or hard drive in your Mac, and you've successfully [installed macOS](#) to the new drive, you'll need to transfer any data you want from the old drive to the new one. This guide will show you how to use Migration Assistant to restore data from an old macOS drive or a [Time Machine Backup](#) to your new drive.



PARTS:

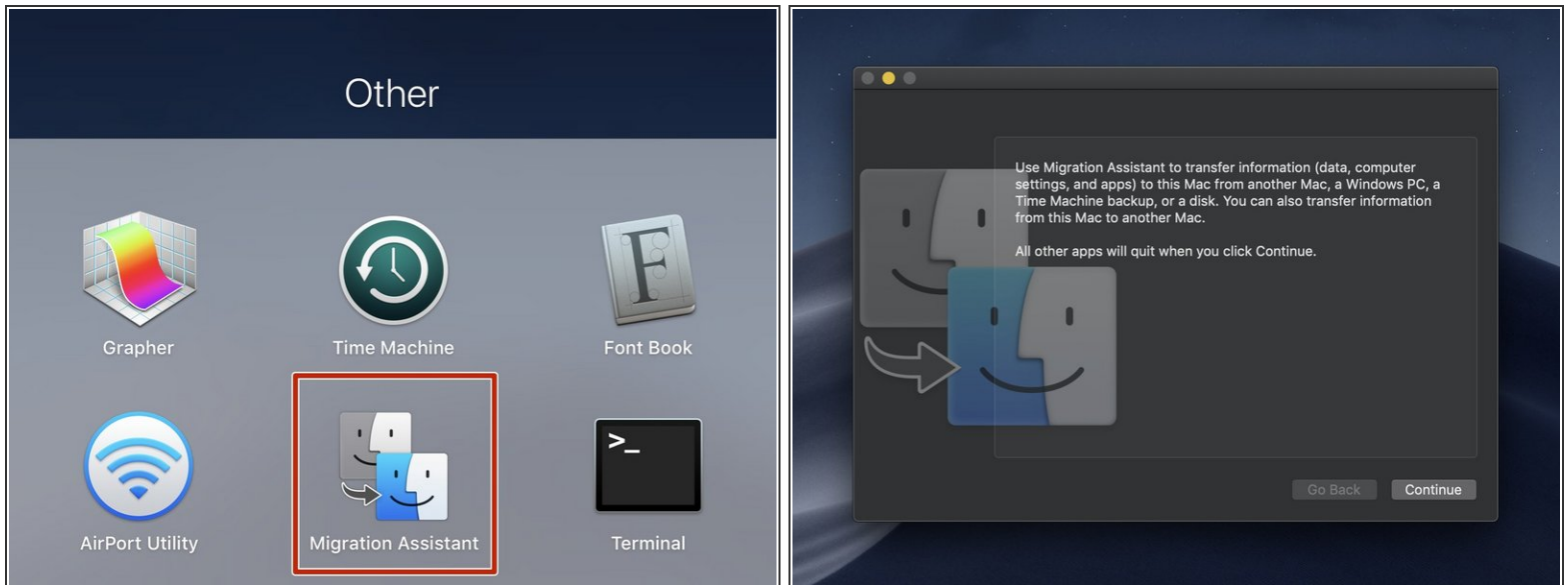
- [OWC Envoy Pro External SSD Enclosure \(Mid 2012 and Early 2013 Macs\)](#) (1)
 - [OWC Envoy Pro External SSD Enclosure \(Mid 2013 to Mid 2015 Macs\)](#) (1)
-

Step 1 — How to migrate data to a new drive in macOS



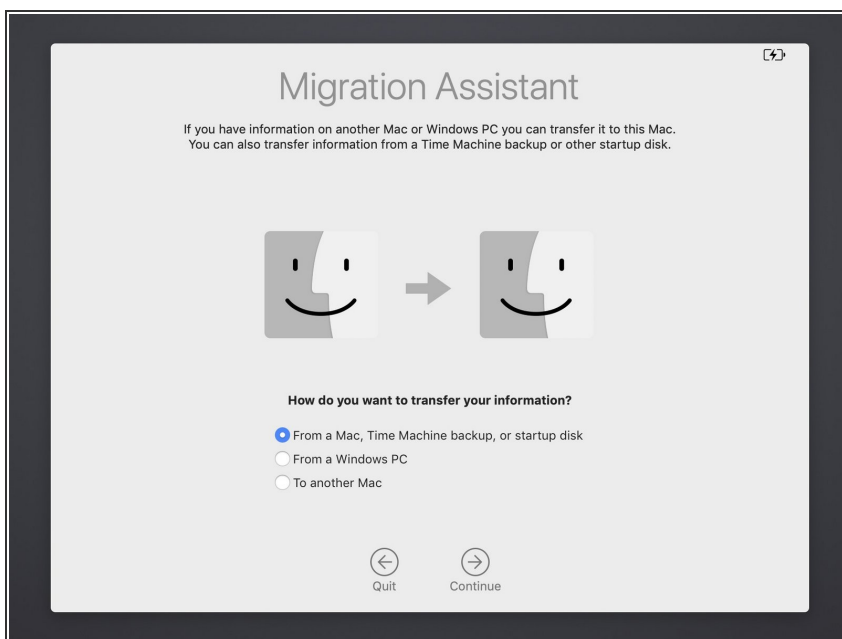
- Before you begin, connect your old macOS drive or a Time Machine backup drive to your computer.
- ⓘ If you forgot to make a backup of your old SSD before upgrading, you can [install](#) it to an [OWC Envoy Pro](#) external SSD enclosure to transfer any data you need as shown in this guide, and then keep it as an external storage drive.

Step 2



- Power on your Mac and open the Migration Assistant application.
- ⚠ After the Migration Assistant window opens, do not press *Continue* until you are ready to begin the migration process. Pushing continue will automatically force close any open applications and log you out.

Step 3



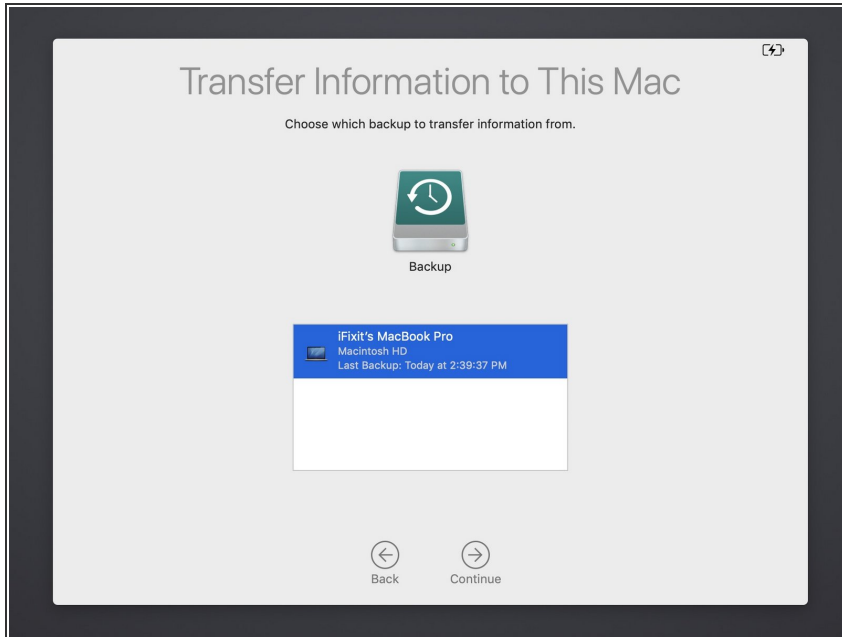
- After you are logged out and taken to the Migration Assistant screen, select the first option: transfer *From a Mac, Time Machine backup, or startup disk*.
- Click *Continue*.

Step 4



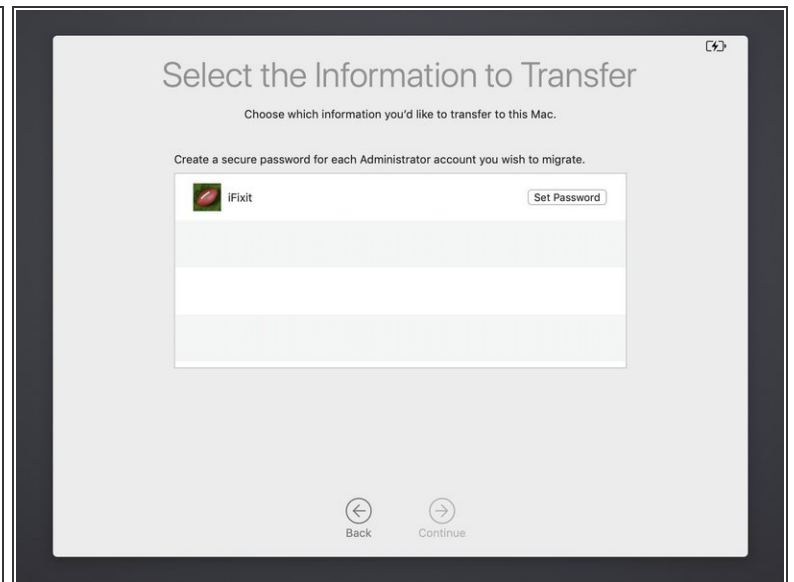
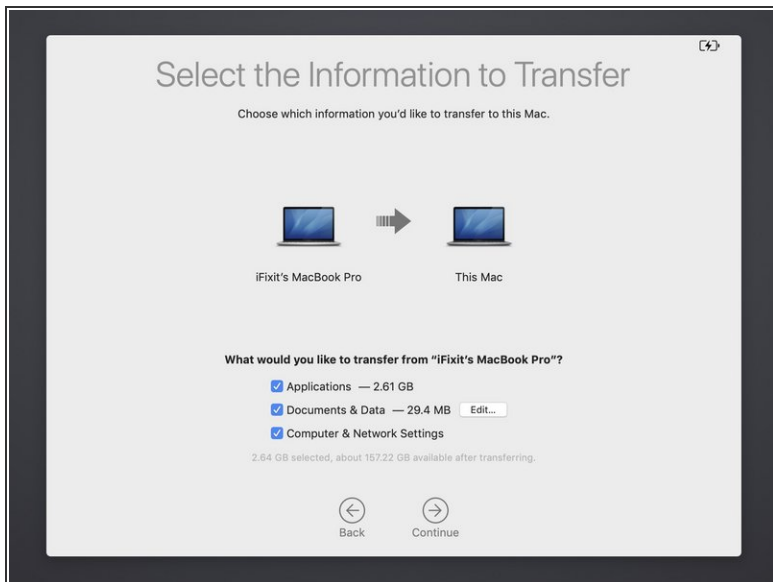
- Migration Assistant will list any connected macOS or Time Machine drives across the top of the window.
- Select the drive you want to restore from, and click *Continue*.

Step 5



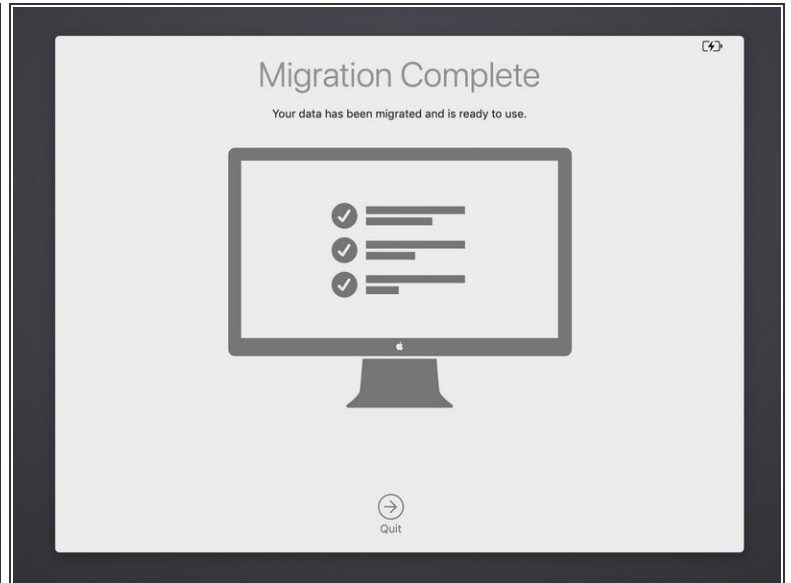
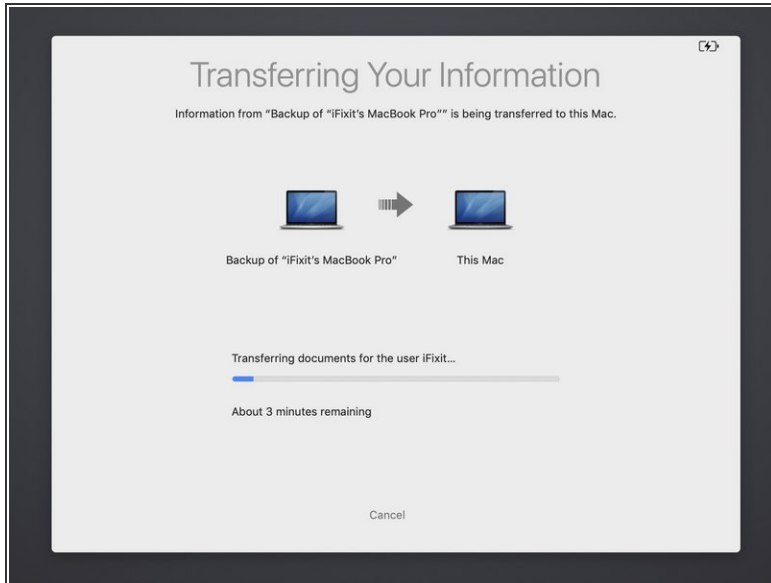
- i** If the drive you have selected is a Time Machine drive, Migration Assistant will list all the backups available from which you can transfer information.
- Select the backup you'd like to transfer information from, and click *Continue*.

Step 6



- Select all the items you'd like to transfer to your new drive.
- i** Next, Migration Assistant may prompt you to enter a new password for the account on the new drive and/or the old password for the account on the old drive.

Step 7



- Once you begin the transfer, a loading bar will appear and cycle through each of the data categories that you selected on the previous screen (applications, documents, etc.).
 - ⓘ Your computer may need to restart multiple times during the transfer process.
- When the transfer is complete, the *Migration Complete* window will appear.

Once all of your data is migrated, you can format your old drive and use it as an external drive with an [SSD enclosure](#), or sell it for someone else to use!